

Rare Deep Cove Offering!



630 Woodcreek Drive



Deep Cove lot ready for your dreams. Nicely treed and level 1-acre lot zoned RA5 located in Lands End Estates, just off Lands End Rd. This bareland 60-lot strata development includes 60-acres of greenbelt with walking and riding trails for the nature enthusiast.

Centrally located between Sidney, the ferries and the airport. Close to Deep Cove Market, Schools, and beach access.

Water: Municipal

Waste: Septic System

Driveway: Gravel, Dirt

Lot Features: Level, Private, Serviced, Treed



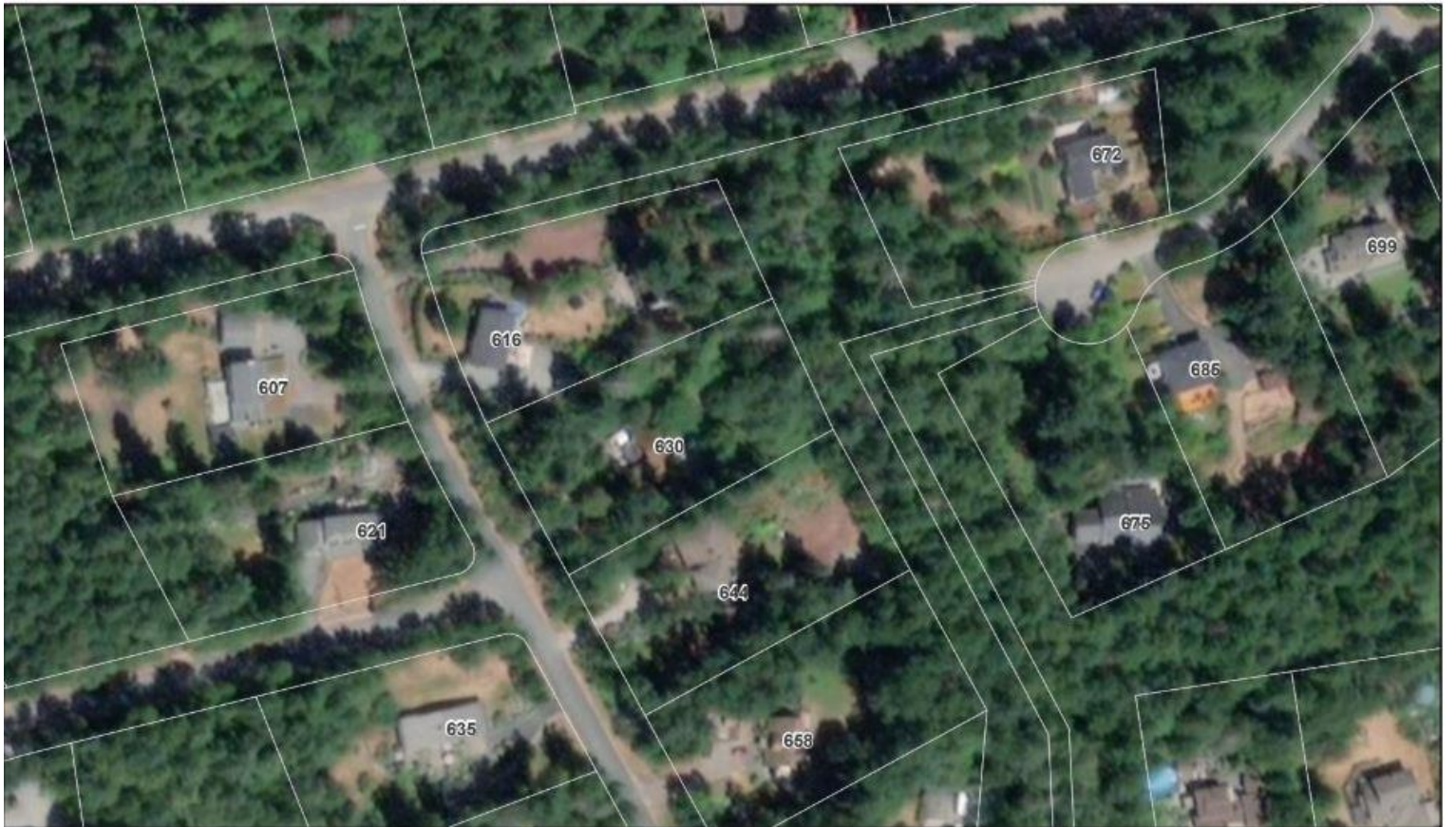
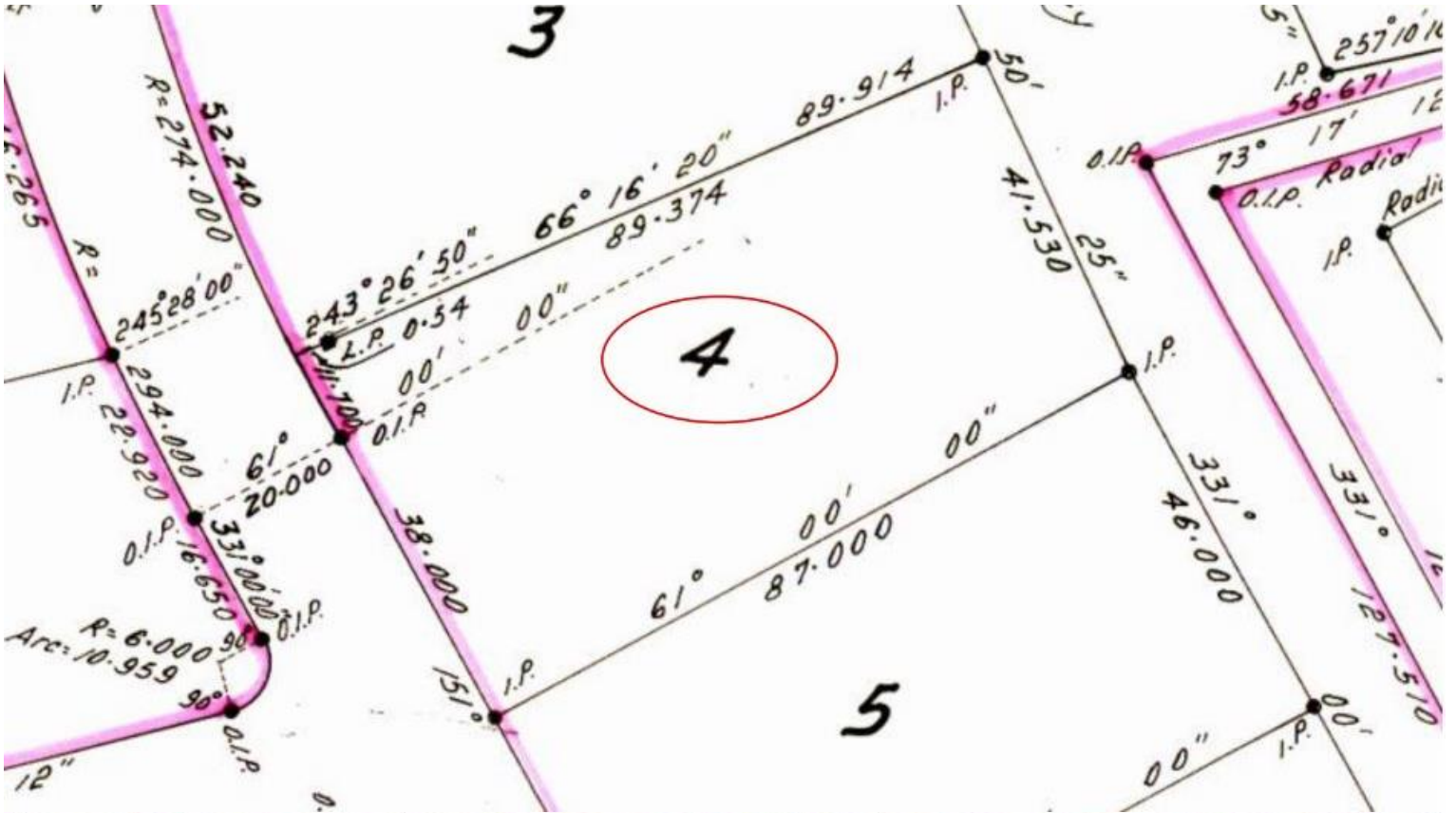
SUZI JACK, *PREC, LICENSED REALTOR®

Office: 250-656-5062 Cell: 250-203-3919 www.DocksdeRealty.ca



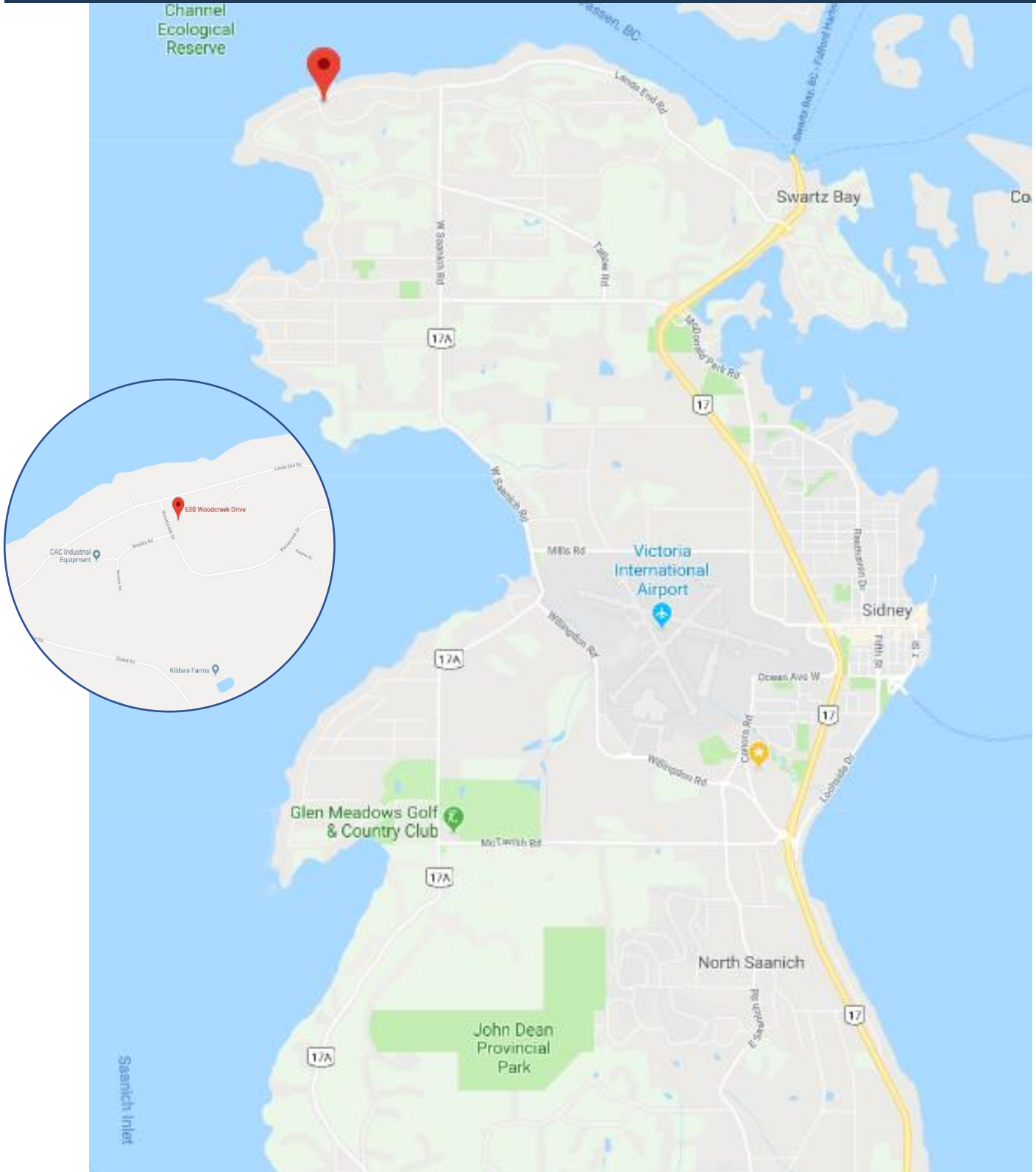
SUZI JACK, *PREC, LICENSED REALTOR®
 Office: 250-656-5062 Cell: 250-203-3919 www.DocksiderRealty.ca

Lot Plan & Aerial



SUZI JACK, *PREC, LICENSED REALTOR®
Office: 250-656-5062 Cell: 250-203-3919 www.DocksiderRealty.ca

Google Area Map



DISCLAIMER: While every effort is made to provide reliable information, Dockside Realty Ltd. makes no representations or warranties as to the accuracy of this brochure.
All measurements are approximate and the buyer is responsible for verifying all data provided.



SUZI JACK, *PREC, LICENSED REALTOR®
Office: 250-656-5062 Cell: 250-203-3919 www.DocksideRealty.ca