

Park-like Building Lot!



6619 RAZOR POINT ROAD



Rare and Rural Building Lot on Razor Point Rd, yet close to shopping at the Driftwood Centre. On Razor Point water system, and an older septic system exists (likely not to today's code) as well as a 28x14 Garage and 10x10 shed. The 14x39 park model trailer is included (As is - Where is) and is a good place to hang out while you build your dream home here. The lot is parklike and private, and ready for a new owner.



Hope Bay: 250-629-3166
Sidney: 250-656-5062
info@DocksiderRealty.ca

Driftwood: 250-629-3383
Saturna: 250-539-2121
www.DocksiderRealty.ca

Property Details



6619 RAZOR POINT ROAD



Lot Acres: 0.51 ac.

Water: Co-op

Potability Test:

Well Log:

Waste: See
Remarks

Perc Test:

Services: Water

Driveway:
Gravel/Dirt

Lot Features:

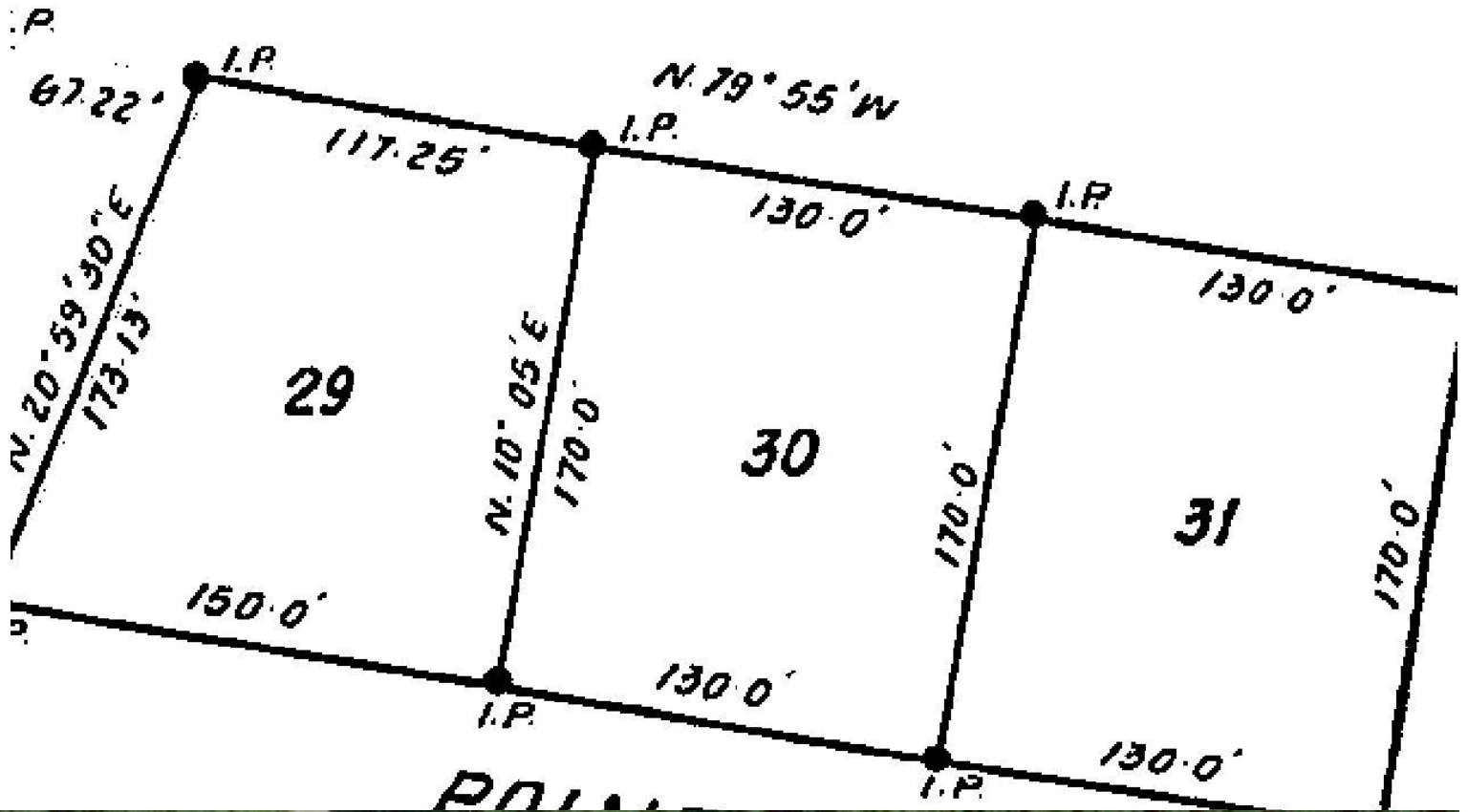
- Ocean Views
- SW Exposure
- Private Property
- Cleared
- Sloping
- Treed
- Level Building Site



Hope Bay: 250-629-3166
Sidney: 250-656-5062
info@DocksideRealty.ca

Driftwood: 250-629-3383
Saturna: 250-539-2121
www.DocksideRealty.ca

Plot Plan and Aerial View

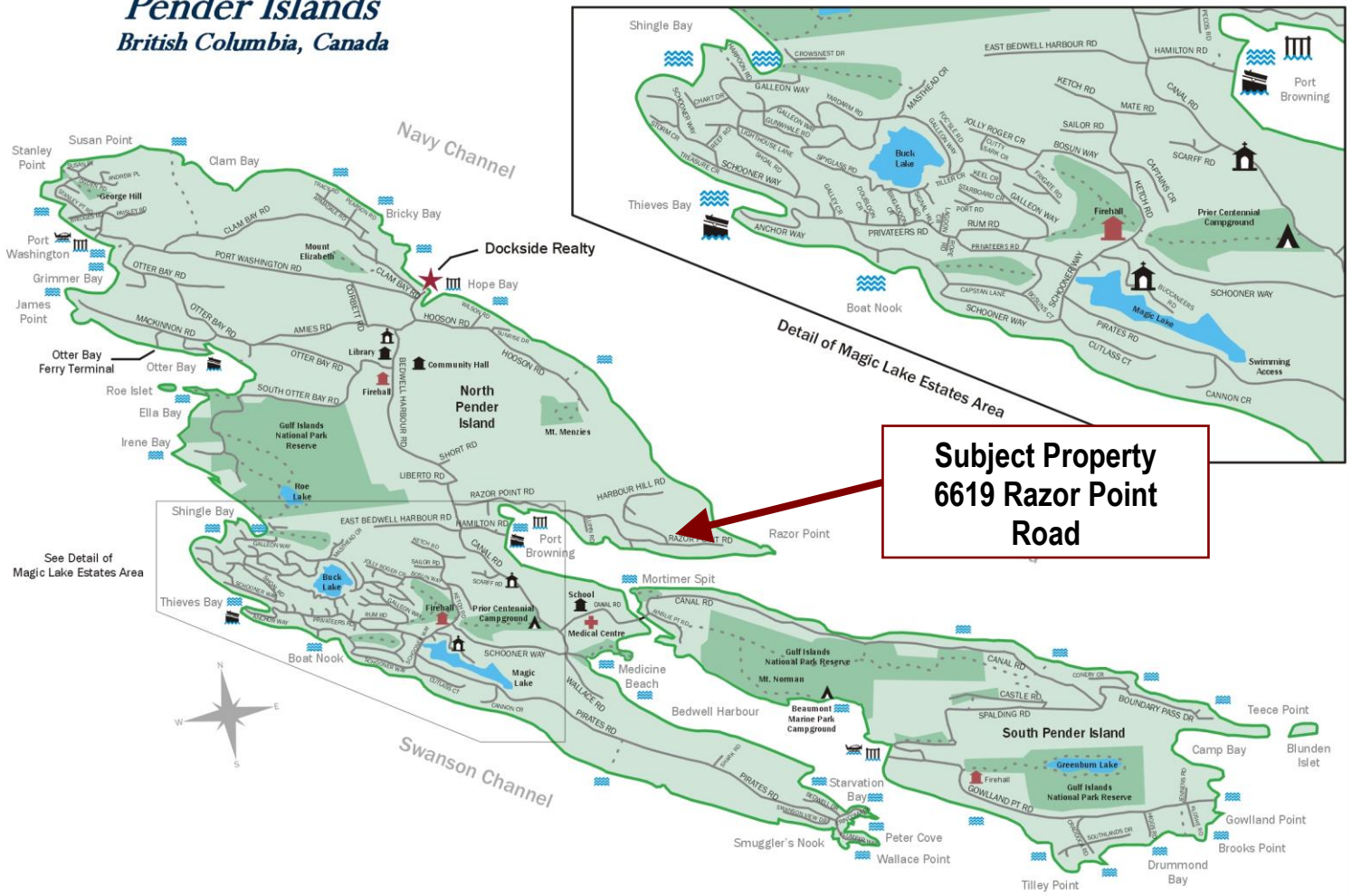


Hope Bay: 250-629-3166
Sidney: 250-656-5062
info@DocksideRealty.ca

Driftwood: 250-629-3383
Saturna: 250-539-2121
www.DocksideRealty.ca

Pender Islands Map

Pender Islands British Columbia, Canada



**Subject Property
6619 Razor Point
Road**

- Dockside Realty
- Public Wharf
- Boat Launch
- Float Plane
- Firehall
- Medical Centre
- Municipal
- Place of Worship
- Campground
- Walking Trail
- Ocean Access/View

Map courtesy of Dockside Realty. Design Copyright © 2012 Minsky Designs www.minskydesigns.com. All rights reserved.

DISCLAIMER: While every effort is made to provide reliable information, Dockside Realty Ltd. makes no representations or warranties as to the accuracy of this brochure.
All measurements are approximate and the buyer is responsible for verifying all data provided.



Hope Bay: 250-629-3166
Sidney: 250-656-5062
info@DocksideRealty.ca

Driftwood: 250-629-3383
Saturna: 250-539-2121
www.DocksideRealty.ca