

Exceptional Oceanview Acreage!



9902 Southlands Dr.



This is an exciting opportunity to acquire an exceptional property on tranquil South Pender Island. Over 15 acres of level, pastoral property featuring expansive South Western ocean views await your creative vision. Vineyard, Olive Groves, Hops, Kiwi, Market gardens and Livestock are all viable options in this desirable sub Mediterranean micro climate. Several choice building sites to choose from and just a few short steps to some of the most spectacular beaches the Penders have to offer. Zoning is agricultural, some driveway access and dug well in place. Septic required. Come; fall in love and start living your dream today!!



Hope Bay: 250-629-3166
Sidney: 250-656-5062
info@DocksiderRealty.ca

Driftwood: 250-629-3383
Saturna: 250-539-2121
www.DocksiderRealty.ca

Property Details



9902 Southlands Dr.



Lot Acres: 15.07

Water: Dug well

Waste: None

Services: At lot line

Driveway:
Gravel/Dirt

Lot Features:

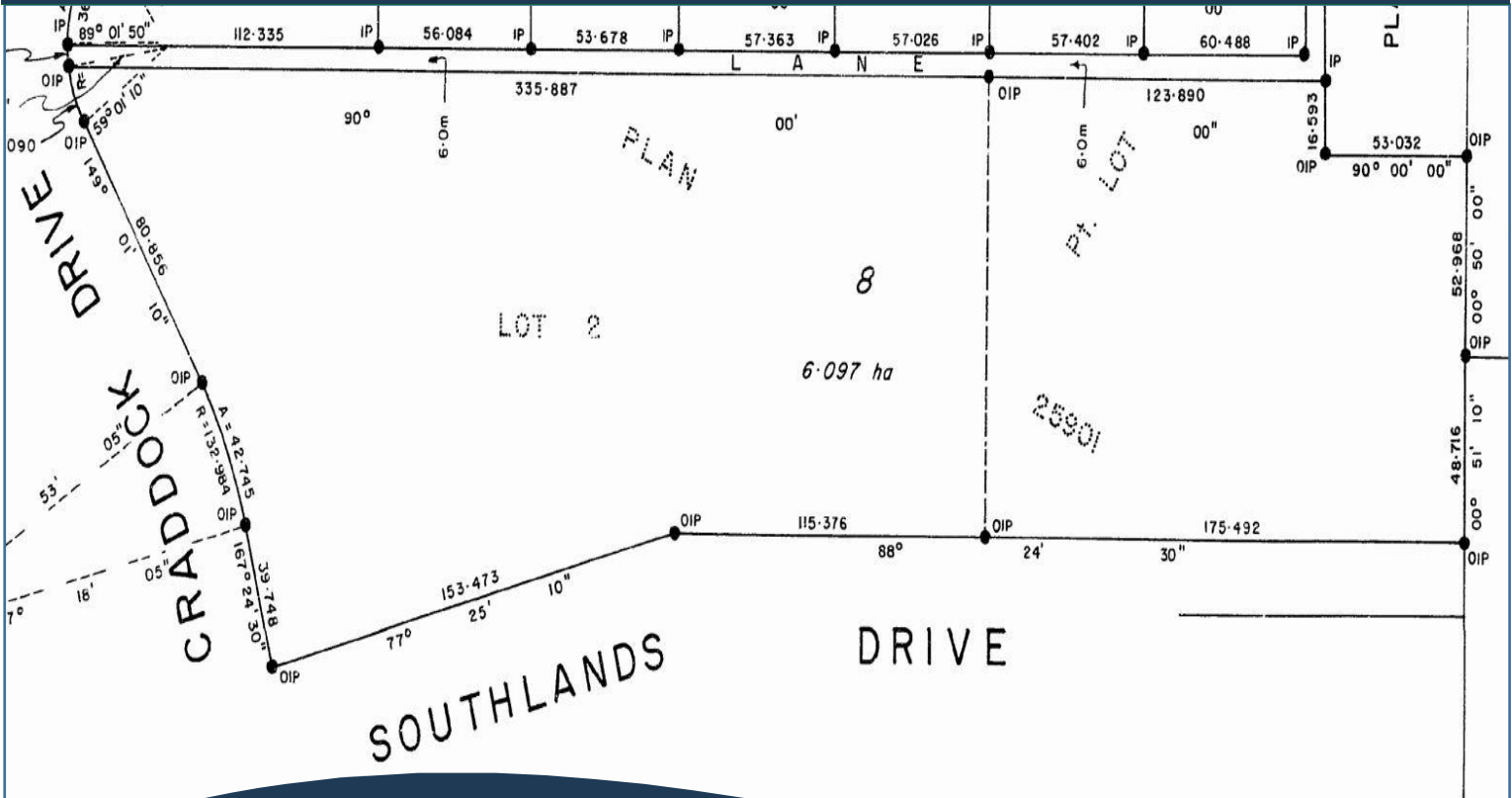
- Ocean Views
- SW Exposure
- Level
- Sloping
- Treed
- Several Building Sites



Hope Bay: 250-629-3166
Sidney: 250-656-5062
info@DocksideRealty.ca

Driftwood: 250-629-3383
Saturna: 250-539-2121
www.DocksideRealty.ca

Plot Plan and Aerial View



9902 Southlands Dr.

Approved as to dedication of lane

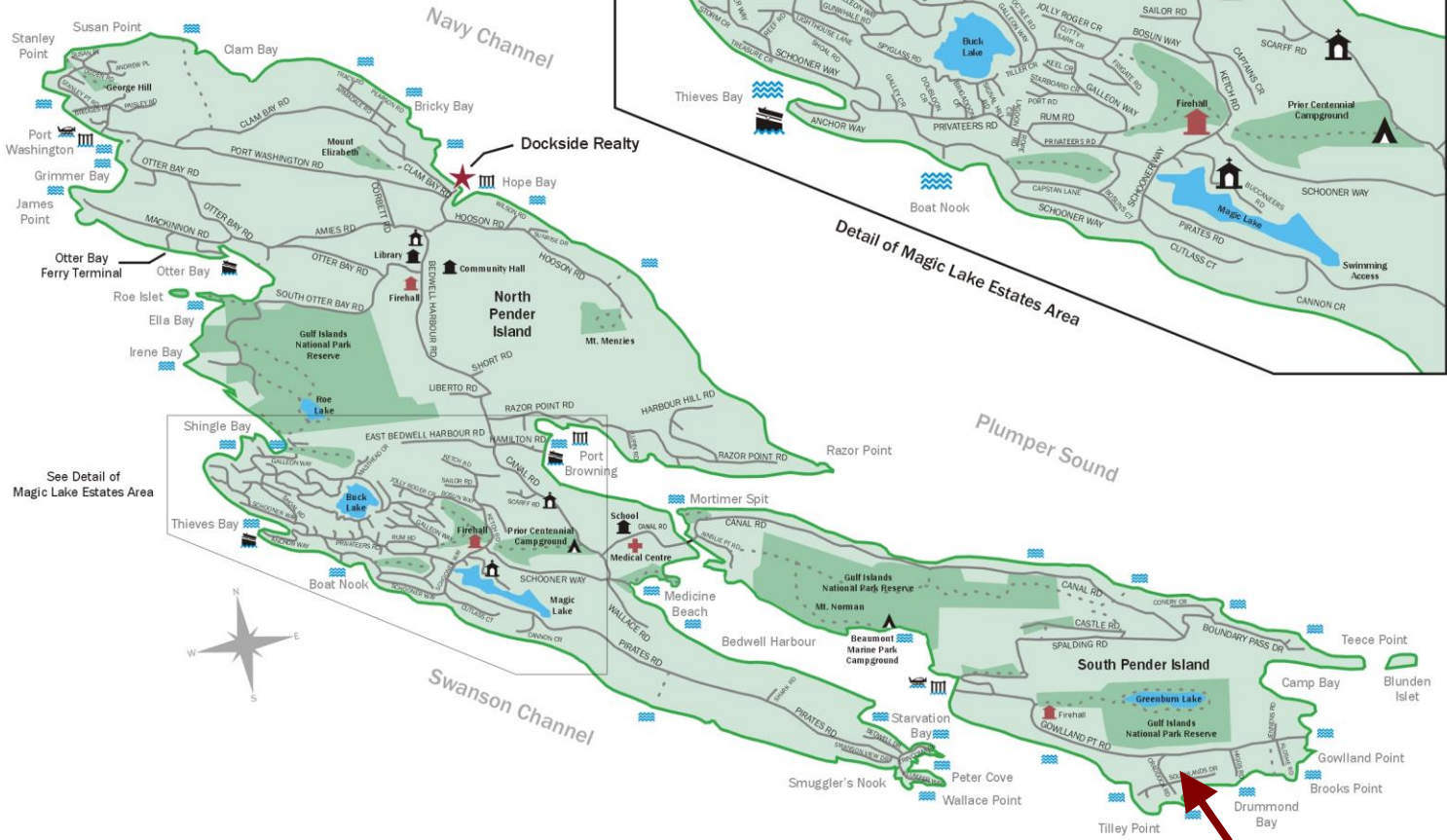
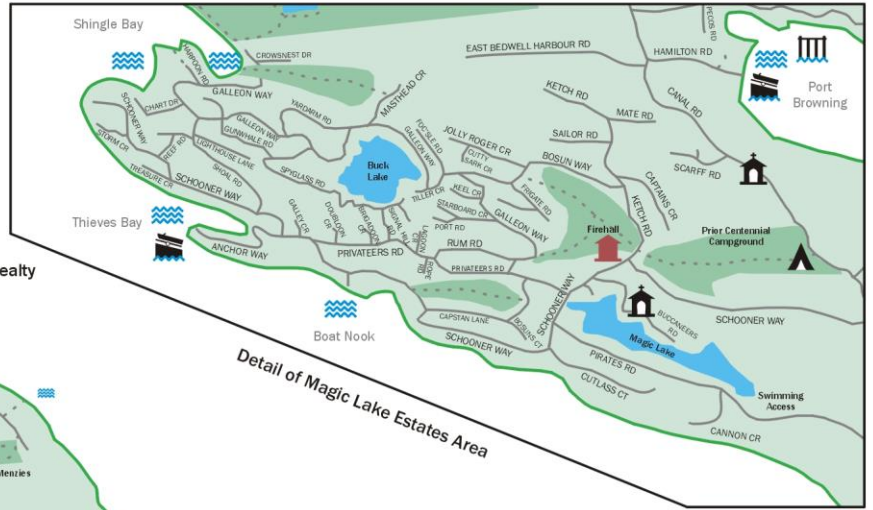


Hope Bay: 250-629-3166
Sidney: 250-656-5062
info@DocksiderRealty.ca

Driftwood: 250-629-3383
Saturna: 250-539-2121
www.DocksiderRealty.ca

Pender Islands Map

Pender Islands British Columbia, Canada



- Dockside Realty
- Public Wharf
- Boat Launch
- Float Plane
- Firehall
- Medical Centre
- Municipal
- Place of Worship
- Campground
- Walking Trail
- Ocean Access/View

**Subject Property
9902 Southlands Dr.**

Map courtesy of Dockside Realty. Design Copyright © 2012 Minsky Designs www.minskydesigns.com. All rights reserved.

DISCLAIMER: While every effort is made to provide reliable information, Dockside Realty Ltd. makes no representations or warranties as to the accuracy of this brochure.
All measurements are approximate and the buyer is responsible for verifying all data provided.



Hope Bay: 250-629-3166
Sidney: 250-656-5062
info@DocksideRealty.ca

Driftwood: 250-629-3383
Saturna: 250-539-2121
www.DocksideRealty.ca