

Sunny Magic Lake Home!



3605 Foc'sle Road



This sunny, well maintained two-story home is situated on a quiet, landscaped cul-de-sac lot in Magic Lake. From the open-concept kitchen with eating bar and great room to the large basement rec room with cozy wood-burning stove, there is plenty of room for the whole family to enjoy. Recent updates include new heat pump upstairs, new paint and remodeled kitchen featuring IMDesign cabinetry. Large deck off the main floor and covered patio below makes for great indoor-outdoor living year-round. The open basement layout has space to easily create a third bedroom. This family-friendly home is near beautiful walking trails, close to the disc golf park, Thieves Bay Marina and tennis courts. Come enjoy island living today - homes in this area do not last long! Measurements are approximate - buyer to verify if important.

Property Details



3605 Foc'sle Road



Year Built (est):
1979

Lot Acres: 0.25 acre

Bedrooms: 2

Bathrooms: 2

Fin SqFt: 1,920

Unfin SqFt: 0

Bsmt: Fully Finished

Bsmt Height: 7' 10"

Water: City/Municipal

Waste: Holding Tank,
Sewer

Foundation:
Slab

Roof: Asphalt
Shingle

Ext Fin: Wood

Fuel: Electric

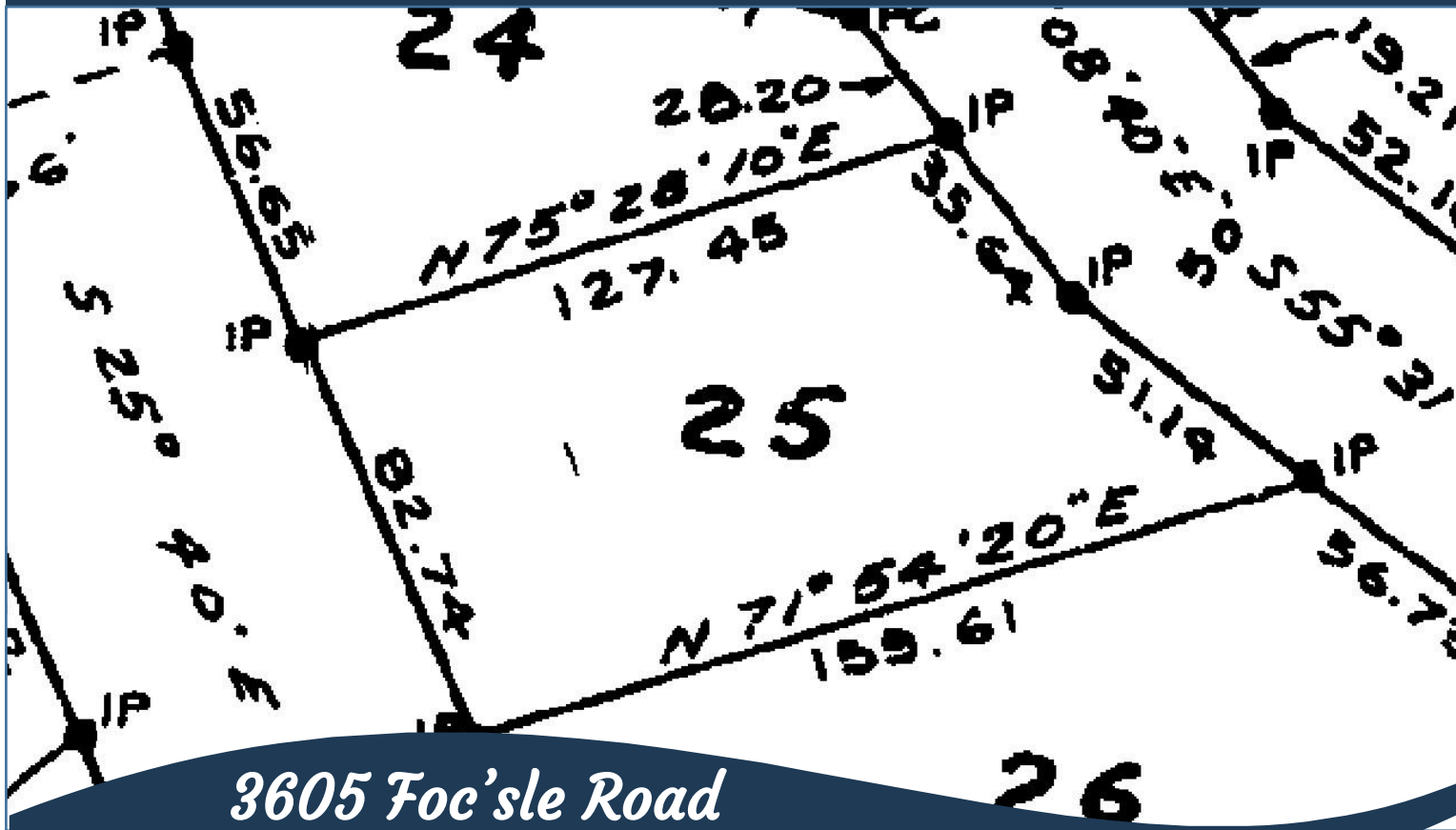
Heat: Wood Stove,
Baseboard, Heat
Pump

FP Location: Rec
Room

Lot Features:

- Balcony
- Fully Fenced
- Covered Patio.
- Cul-de-Sac lot

Plot Plan and Aerial View



3605 Foc'sle Road

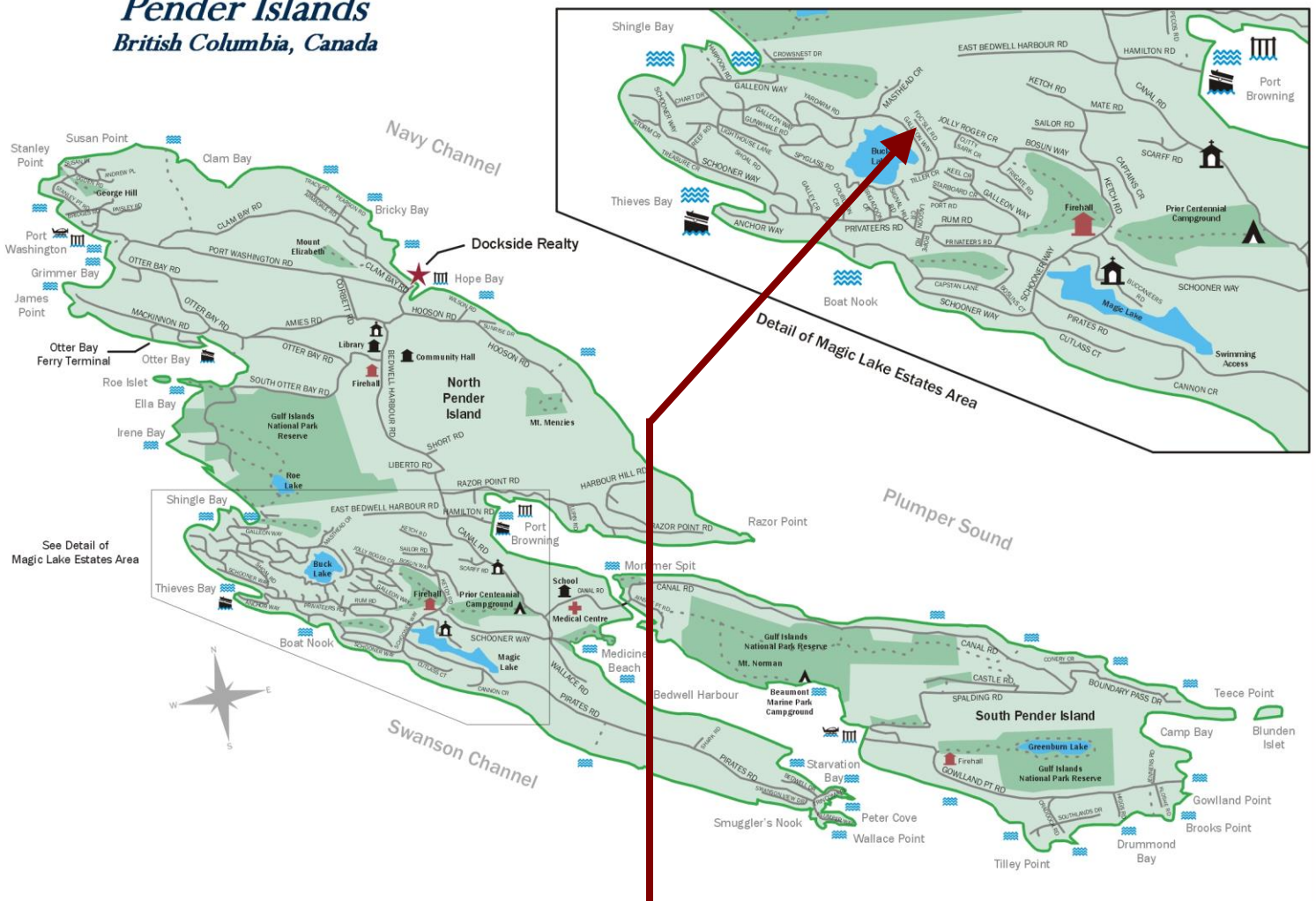


Hope Bay: 250-629-3166
Sidney: 250-656-5062
info@DocksideRealty.ca

Driftwood: 250-629-3383
Saturna: 250-539-2121
www.DocksideRealty.ca

Pender Islands Map

Pender Islands British Columbia, Canada



**Subject Property
3605 Foc'sle Road**

- Dockside Realty
- Public Wharf
- Boat Launch
- Float Plane
- Firehall
- Medical Centre
- Municipal
- Place of Worship
- Campground
- Walking Trail
- Ocean Access/View

Map courtesy of Dockside Realty. Design Copyright © 2012 Minsky Designs www.minskydesigns.com. All rights reserved.

DISCLAIMER: While every effort is made to provide reliable information, Dockside Realty Ltd. makes no representations or warranties as to the accuracy of this brochure.

All measurements are approximate and the buyer is responsible for verifying all data provided.



Hope Bay: 250-629-3166
Sidney: 250-656-5062
info@DocksideRealty.ca

Driftwood: 250-629-3383
Saturna: 250-539-2121
www.DocksideRealty.ca