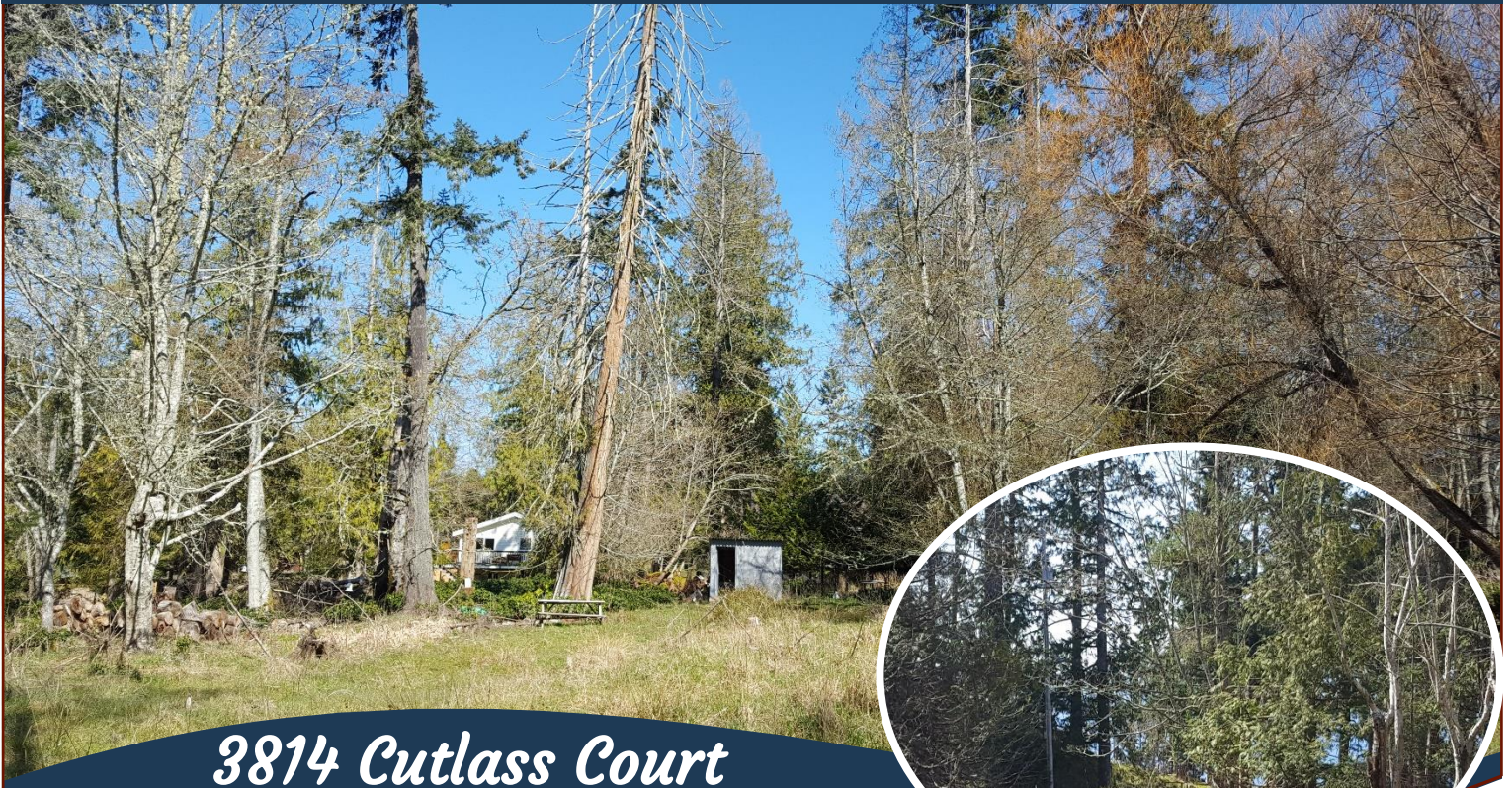


Best Lot in Magic Lake!



3814 Cutlass Court



Best of the Best!!

Presenting one of the best building lots currently available in the Magic Lake subdivision at this price point. Nearly half an acre of level, cleared, property enjoys sunny southern exposure and ocean glimpses! Services at road include: Municipal water and sewer, hydro, cable and internet. Great location on no through road is near public access to Magic Lake and ocean access at Boat Nook. This is an awesome opportunity to create your dream home!!



Hope Bay: 250-629-3166
Sidney: 250-656-5062
info@DocksdeRealty.ca

Driftwood: 250-629-3383
Saturna: 250-539-2121
www.DocksdeRealty.ca

Property Details



3814 Cutlass Court



Walk to Magic Lake



Launch a Kayak at Boat Nook nearby

Lot & Services:

Lot Acres: 0.44

Water: City/municipal

Waste: Sewer

Services: At lot line

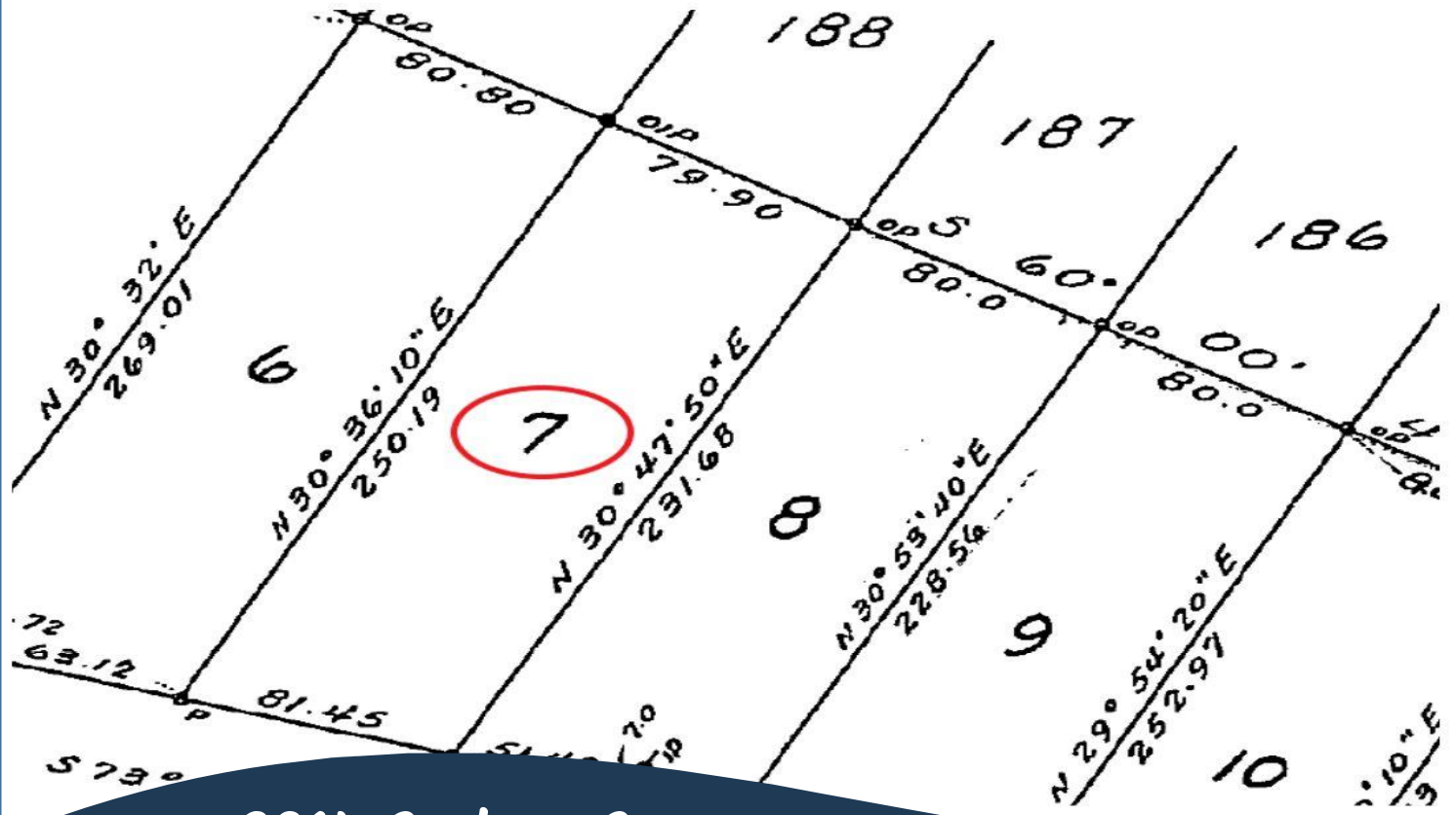
Driveway: Gravel/dirt

Bldg Scheme: No

Lot Features:

- Level Building Site
- Southern Exposure
- Cleared
- Ocean glimpses
- Rectangular
- Walking distance to Magic Lake

Plot Plan and Aerial View



3814 Cutlass Court

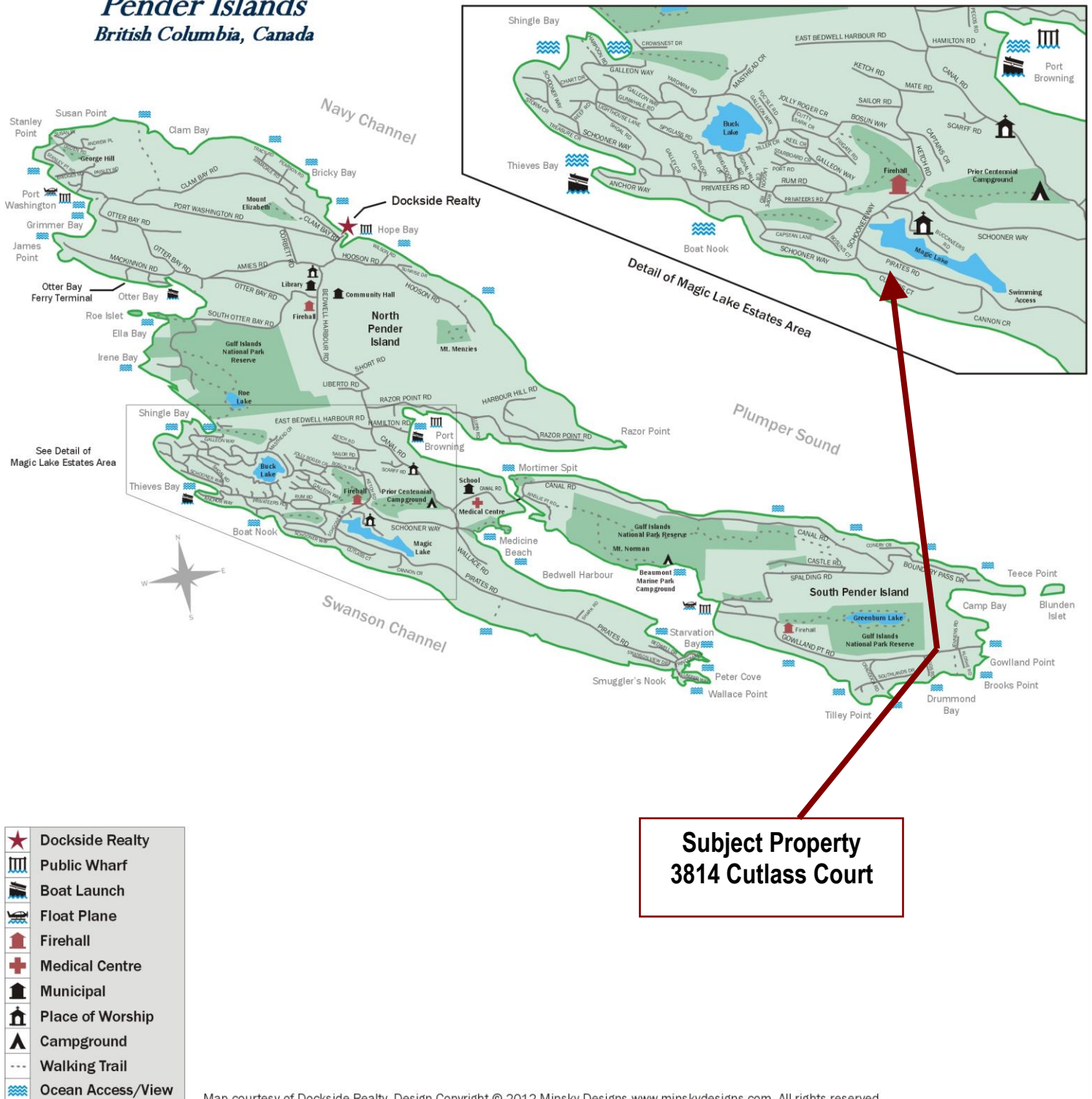


Hope Bay: 250-629-3166
Sidney: 250-656-5062
info@DocksiderRealty.ca

Driftwood: 250-629-3383
Saturna: 250-539-2121
www.DocksiderRealty.ca

Pender Islands Map

Pender Islands British Columbia, Canada



DISCLAIMER: While every effort is made to provide reliable information, Dockside Realty Ltd. makes no representations or warranties as to the accuracy of this brochure.

All measurements are approximate and the buyer is responsible for verifying all data provided.



Hope Bay: 250-629-3166
Sidney: 250-656-5062
info@DocksideRealty.ca

Driftwood: 250-629-3383
Saturna: 250-539-2121
www.DocksideRealty.ca