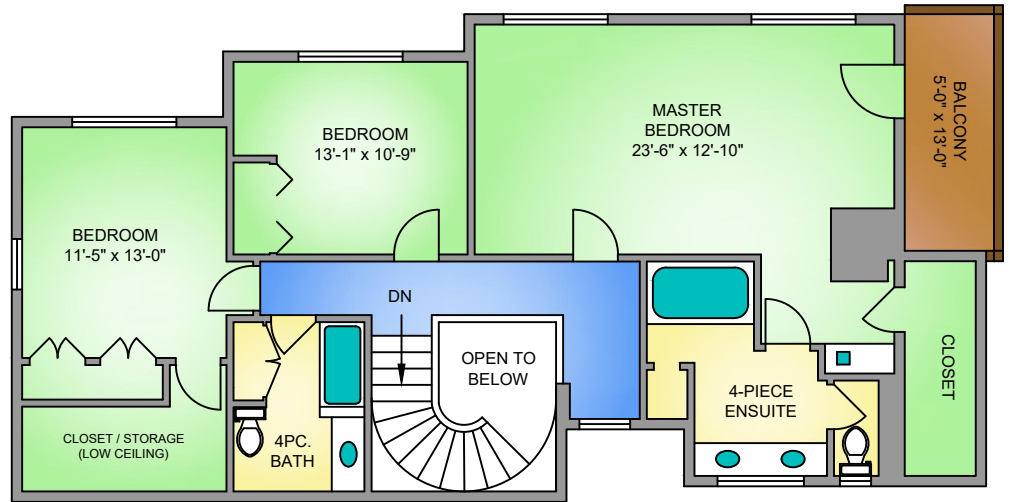
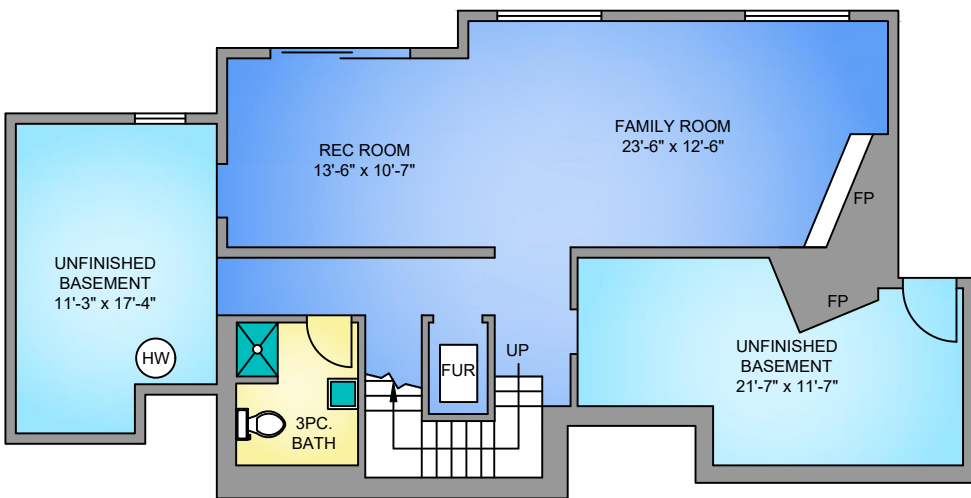


**MAIN FLOOR**  
**1245 SQ. FT.**  
 8FT TO 9FT.  
 CEILINGS

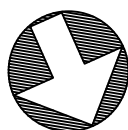


**UPPER FLOOR**  
**1292 SQ. FT.**  
 9FT. CEILING



**LOWER FLOOR**  
**1235 SQ. FT.**  
 8'-6" CEILING

NORTH



8936 GOWLLAND POINT ROAD				
MARCH 15, 2020				
PREPARED FOR THE EXCLUSIVE USE OF JAIME MACLEAN				
PLANS MAY NOT BE 100% ACCURATE, IF CRITICAL BUYER TO VERIFY.				
FLOOR	AREA (SQ. FT.)			
	TOTAL	FINISHED	UNFINISHED	DECK / PATIO
MAIN	1245	1245	-	798
UPPER	1212	1212	-	-
LOWER	1235	671	564	-
<b>TOTAL</b>	<b>3692</b>	<b>3128</b>	<b>564</b>	<b>798</b>