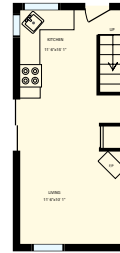
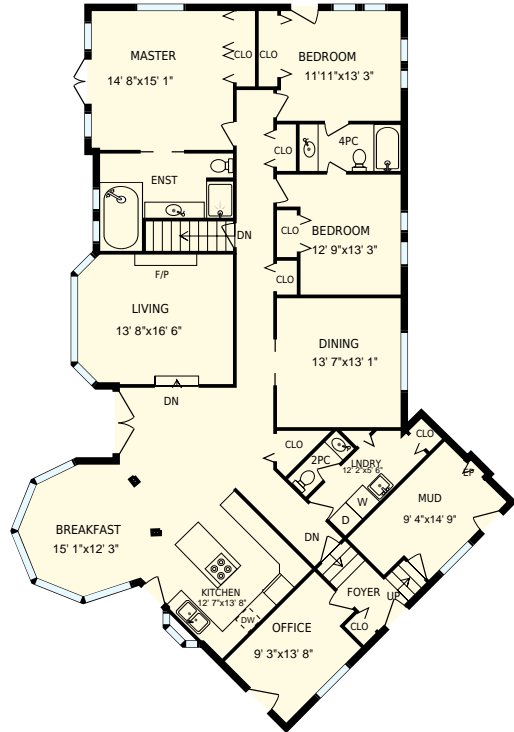




# 825 Gorge Harbour, Cortes Island, BC

Total Exterior Area Above Grade 2582 sq. ft.



**MAIN FLOOR**  
Exterior Area 2582 sq. ft.

**Guest House**

**Guest House Upper**

All room dimensions and floor areas must be considered approximate and are subject to independent verification. For method of measurement please see <https://youriguide.com/measure/>.

PREPARED FOR: Suzi Jack  
Realtor  
Dockside Realty



825 Gorge Harbour, Cortes Island, BC

PREPARED FOR:  
Suzi Jack  
Realtor  
Dockside Realty

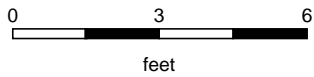
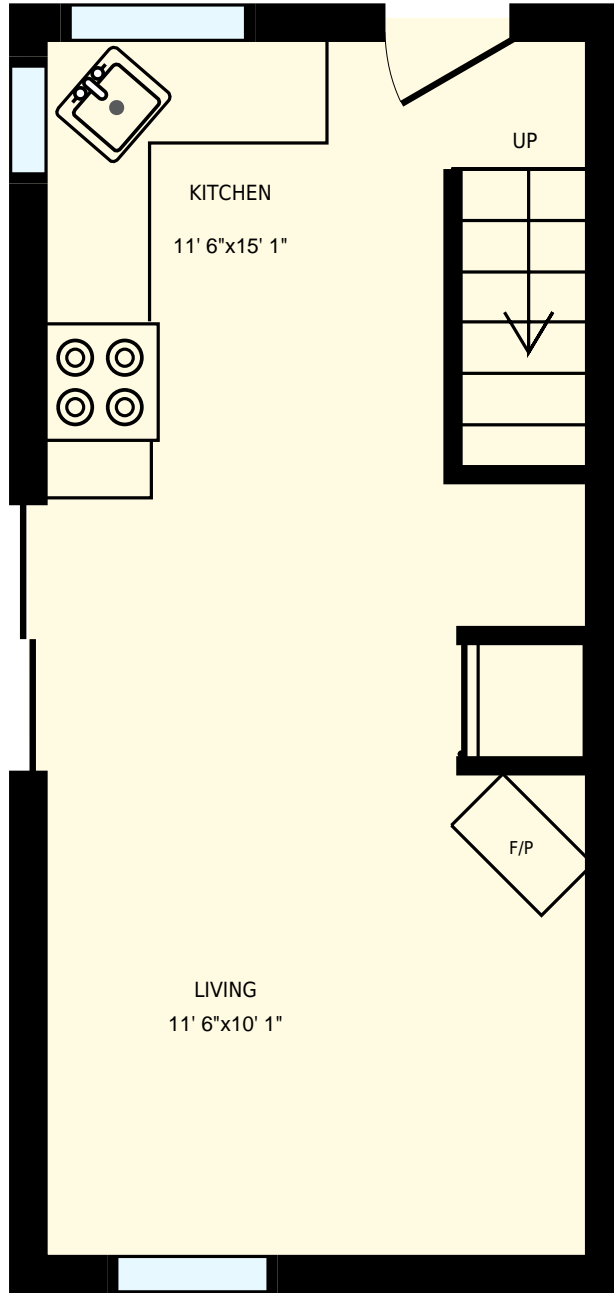
**MAIN FLOOR**

Interior Area 2443 sq. ft.  
Exterior Area 2582 sq. ft.

Included Area

PREPARED ON:  
Aug, 2017

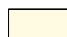
All room dimensions and floor areas must be considered approximate and are subject to independent verification.  
For method of measurement please see <https://youriguide.com/measure/>.



825 Gorge Harbour, Cortes Island, BC  
Guest House

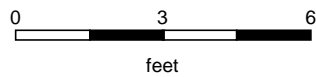
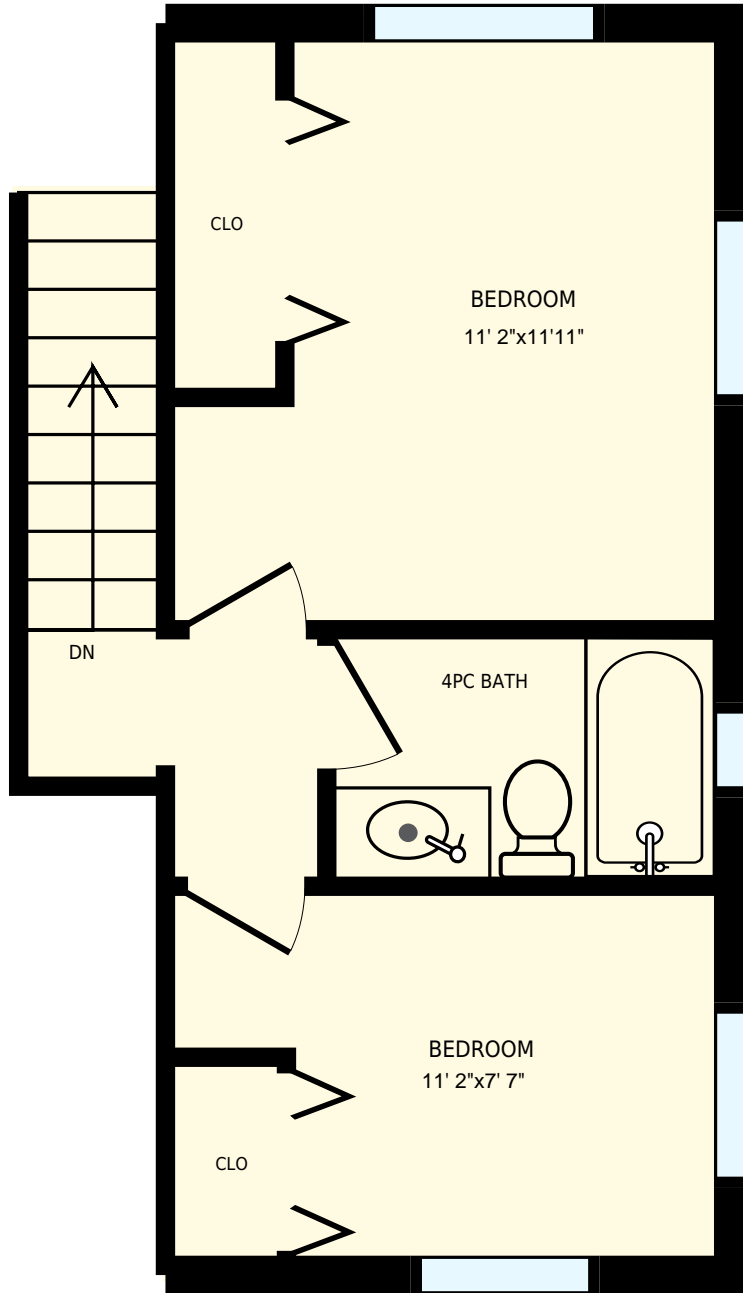
PREPARED FOR:  
Suzi Jack  
Realtor  
Dockside Realty

Interior Area 290 sq. ft.  
Exterior Area

 Included Area

PREPARED ON:  
Aug, 2017

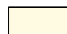
All room dimensions and floor areas must be considered approximate and are subject to independent verification.  
For method of measurement please see <https://youriguide.com/measure/>.



825 Gorge Harbour, Cortes Island, BC  
 Guest House Upper

PREPARED FOR:  
 Suzi Jack  
 Realtor  
 Dockside Realty

Interior Area 322 sq. ft.  
 Exterior Area

 Included Area

PREPARED ON:  
 Aug, 2017

All room dimensions and floor areas must be considered approximate and are subject to independent verification.  
 For method of measurement please see <https://youriguide.com/measure/>.