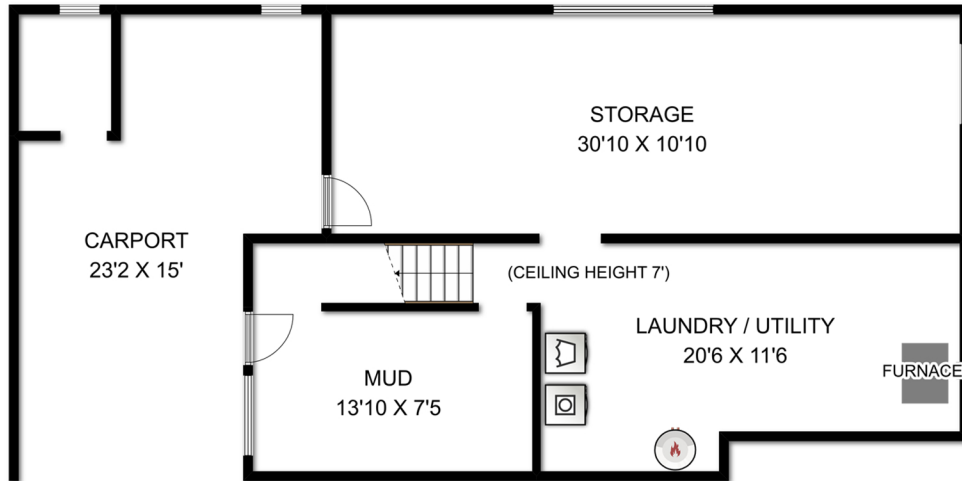


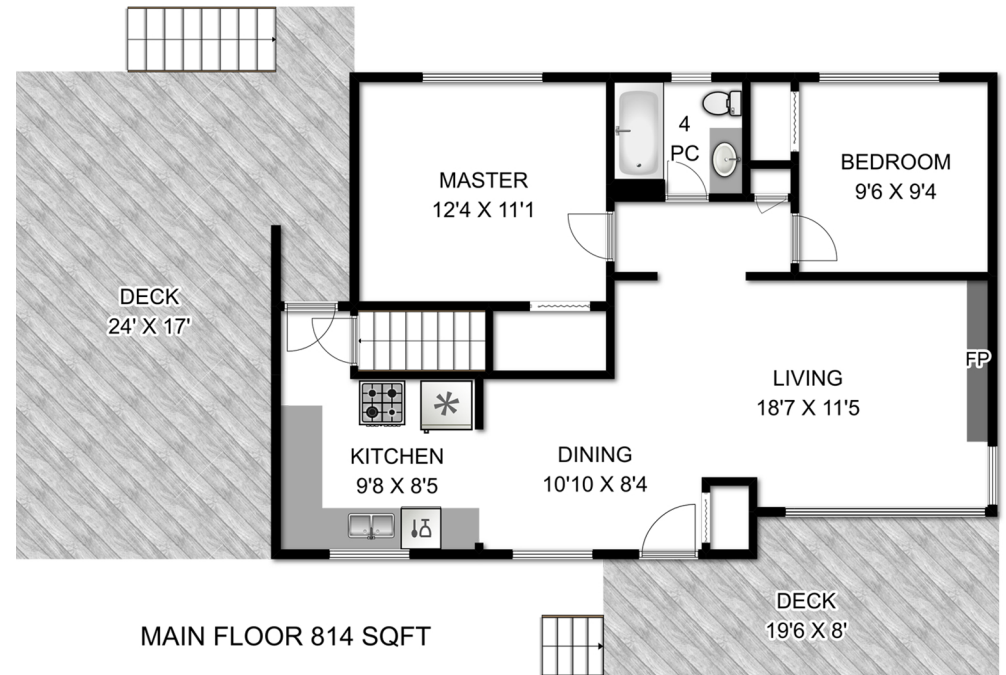
3220 SOUTH ISLAND HIGHWAY

TOTAL SQUARE FOOTAGE 1612 SQFT

TOTAL FINISHED 814 SQFT



UNFINISHED BASEMENT 798 SQFT



MAIN FLOOR 814 SQFT



prepared for **SUZI JACK**

Prepared for the exclusive use of SUZI JACK
Measurements on the plans are intended for
visual reference only and should be verified.

