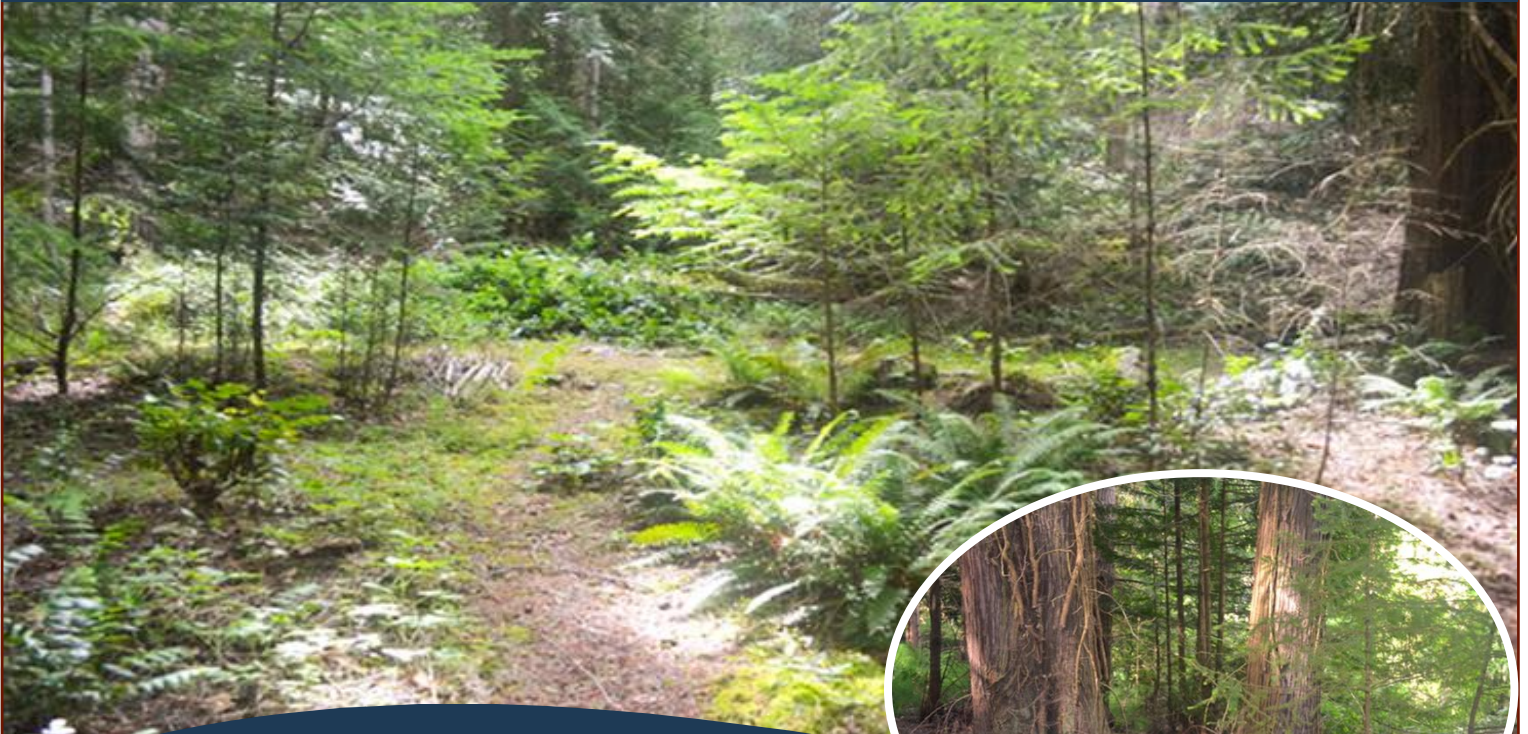


A Piece of Paradise!



111 Payne Road



Piece of Paradise! This slice of Saturna is conveniently located within walking distance to ferry landing as well as to store, pub, library, community hall & rec centre. Quiet little community neighbourhood feel. Partially groomed, partially natural 0.35 acre lot with a 28 ft. "Dutchman Classic" trailer in place to camp out in, all set up and ready for your arrival on Sunny Saturna! This could be the retreat you have been waiting for! Use as is, or stay in trailer while you build your dream cottage or home. Great price. This one will not last!



MICHAEL VAUTOUR, LICENSED REALTOR®
Office: 250-539-2121 Cell: 250-818-3919 www.SaturnaRealty.ca

Property Details



111 Payne Road



Lot Acres: 0.35

Water: City/municipal

Waste: None

Services: At lot line

Driveway: Dirt/Gravel

Bldg Scheme: No

Lot Features:

-Treed

-Partially cleared

-Private

-Close to ferry

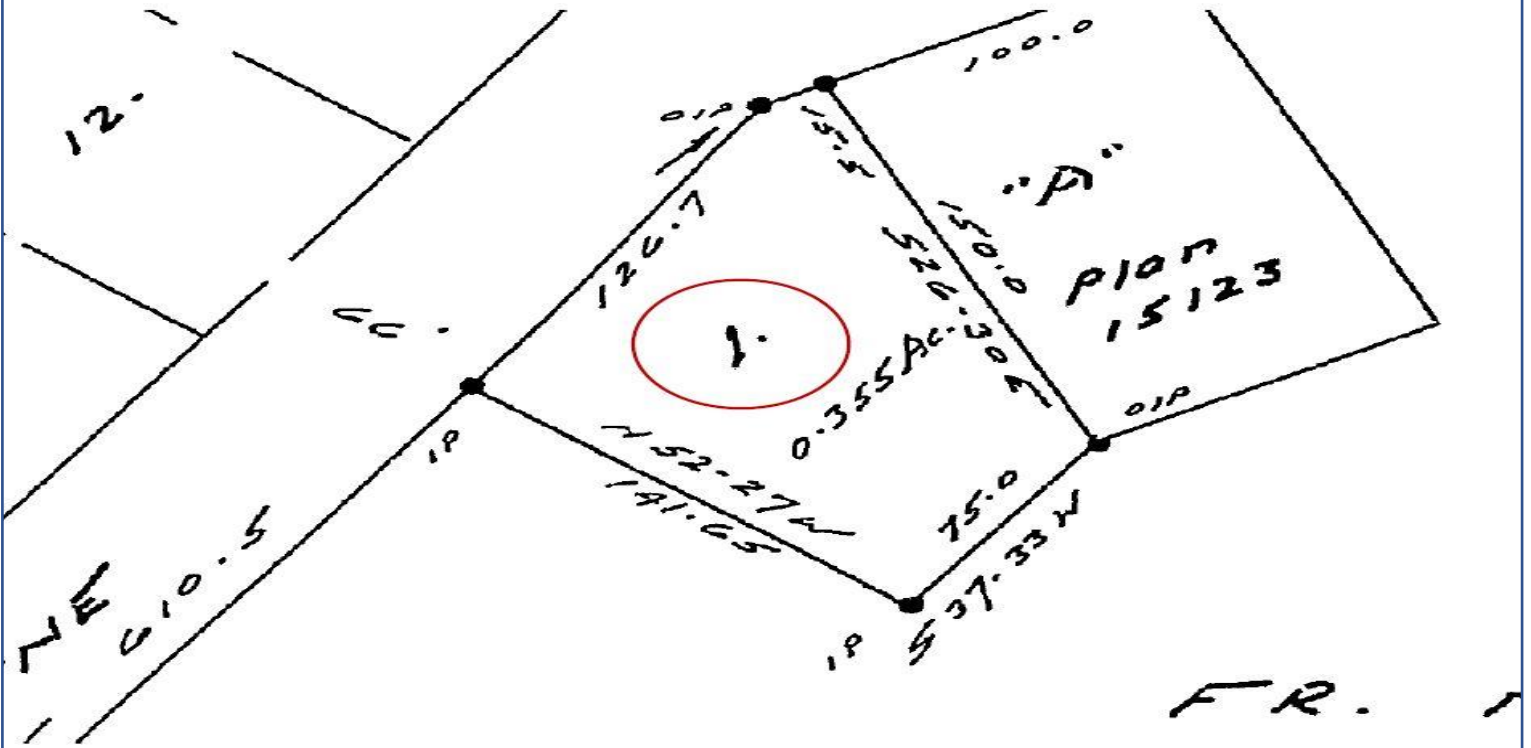
-Trailer in place



MICHAEL VAOUTOUR, LICENSED REALTOR®

Office: 250-539-2121 Cell: 250-818-3919 www.SaturnaRealty.ca

Plot Plan and Aerial View



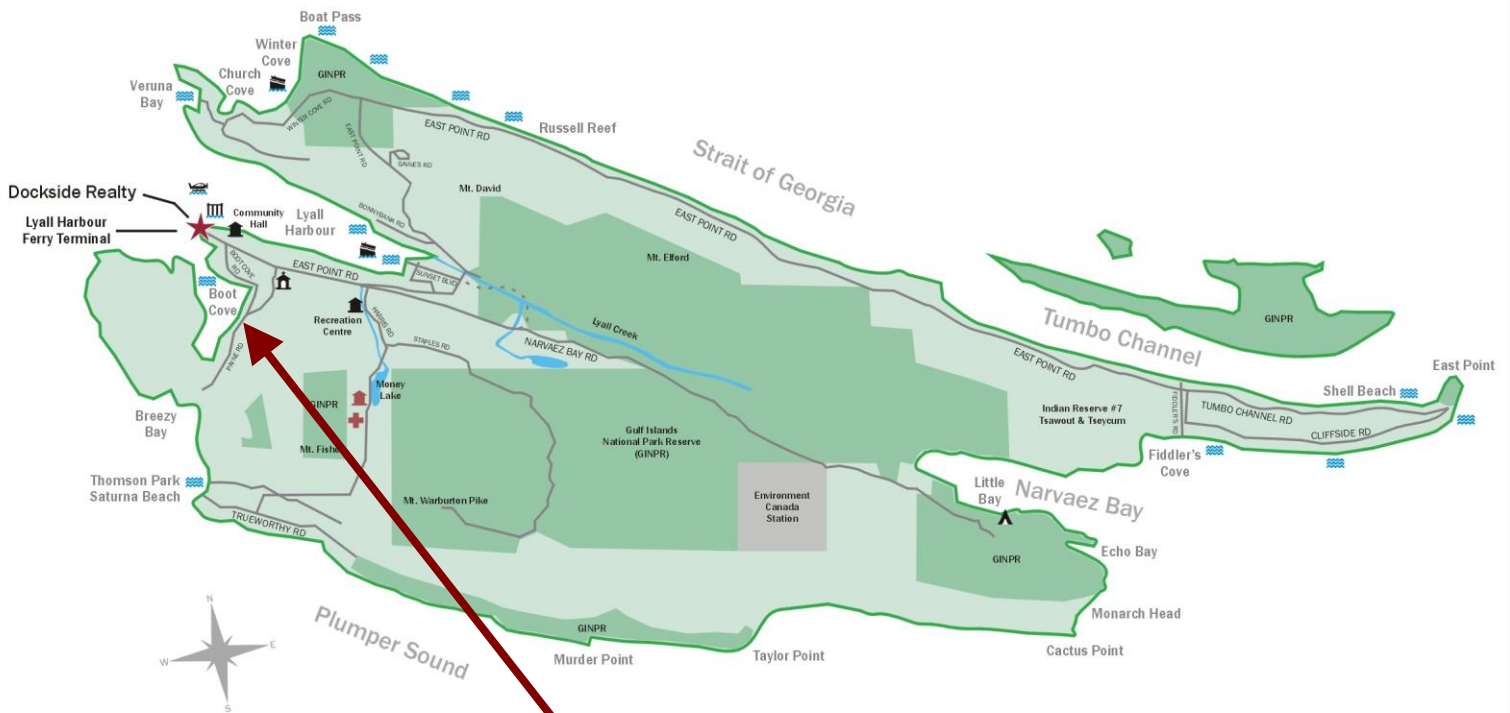
111 Payne Road



MICHAEL VAUTOUR, LICENSED REALTOR®
Office: 250-539-2121 Cell: 250-818-3919 www.SaturnaRealty.ca

Google Area Map

Saturna Island British Columbia, Canada



**Subject Property
111 Payne Rd**

- Dockside Realty
- Public Wharf
- Boat Launch
- Float Plane
- Firehall
- Medical Centre
- Municipal
- Place of Worship
- Campground
- Walking Trail
- Ocean Access/View

Map courtesy of Dockside Realty. Design Copyright © 2012 Minsky Designs www.minskydesigns.com. All rights reserved.

DISCLAIMER: While every effort is made to provide reliable information, Dockside Realty Ltd. makes no representations or warranties as to the accuracy of this brochure.
All measurements are approximate and the buyer is responsible for verifying all data provided.



MICHAEL VAUTOUR, LICENSED REALTOR®
Office: 250-539-2121 Cell: 250-818-3919 www.SaturnaRealty.ca