

Beautiful Shingle Bay Location!



2614 Crowsnest Dr



Location, Location, Location!! This rustic one-bedroom cottage offers a perfect getaway retreat. The 1-acre private property backs onto parkland and is situated near the end of a very quiet, no through road with more parkland across the street. Sunny front yard features a fully fenced veggie garden. Beach access at Shingle Bay is only 100 meters away; perfect spot to launch your kayak. The trail head to the Roe Lake hiking loop is equally nearby. Homeowners in this neighbourhood may qualify for moorage at Thieves Bay Marina. All measurements approximate and should be verified by Buyer if important.



Shingle Bay – 100 meters away



Park at Shingle Bay

Property Details



2614 Crowsnest Dr



Year Built (est):
1985

Lot Acres: 1.02

Bedrooms: 1

Bathrooms: 1

Fin SqFt: 555

Unfin SqFt: 600

Bsmt: Crawl space

Water: City/municipal

Waste: Septic system

Driveway: Gravel/dirt

Foundation:
Concrete Poured

Roof: Asphalt
Shingle

Ext Fin: Wood

Fuel: Electric

Heat: Baseboard

FP Location: None

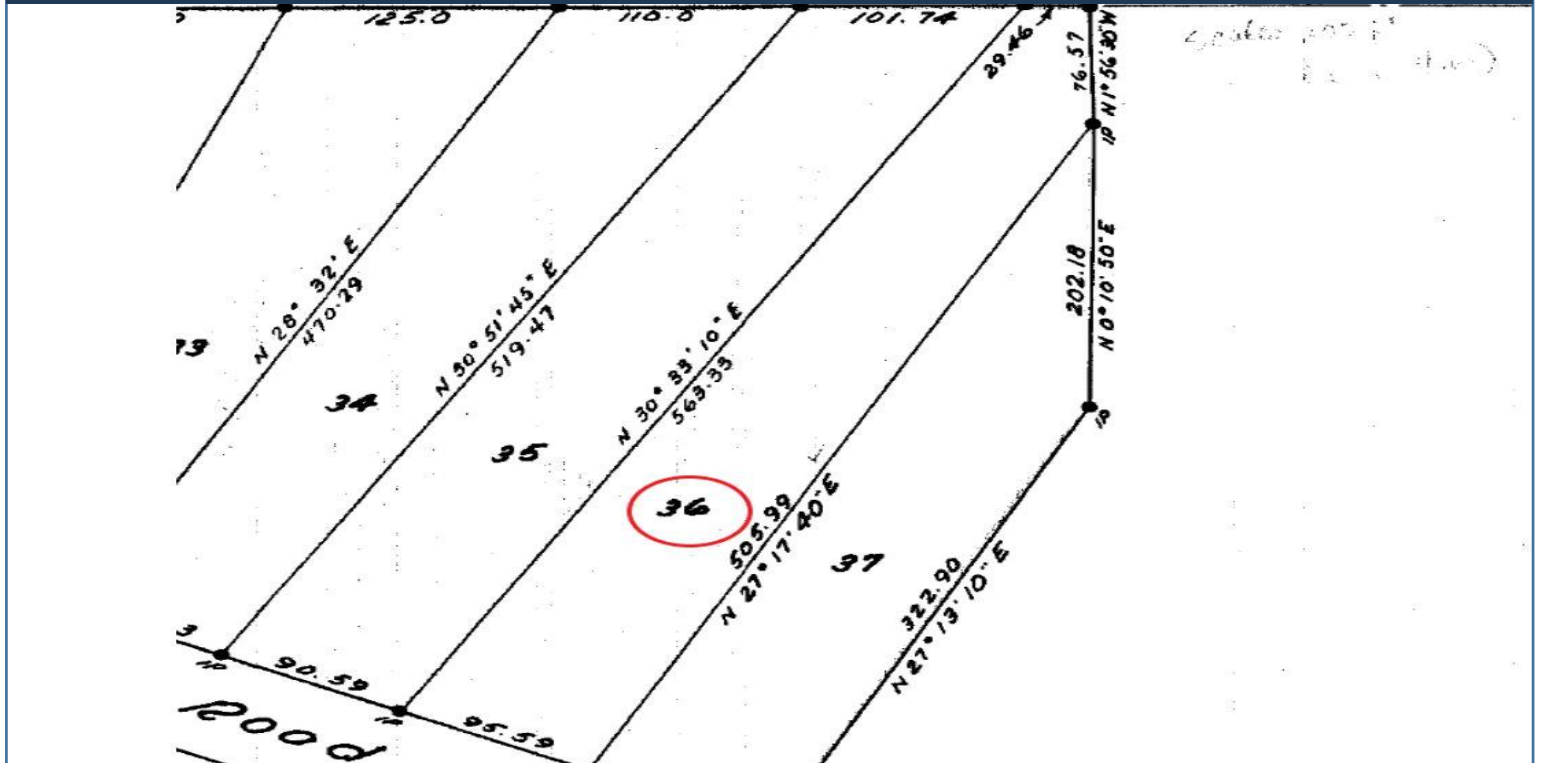
Lot Features:
- Large balcony
- Private & sunny
- Beautiful acre
- Great location



Hope Bay: 250-629-3166
Sidney: 250-656-5062
info@DocksideRealty.ca

Driftwood: 250-629-3383
Saturna: 250-539-2121
www.DocksideRealty.ca

Plot Plan and Aerial View



2614 Crowsnest Dr

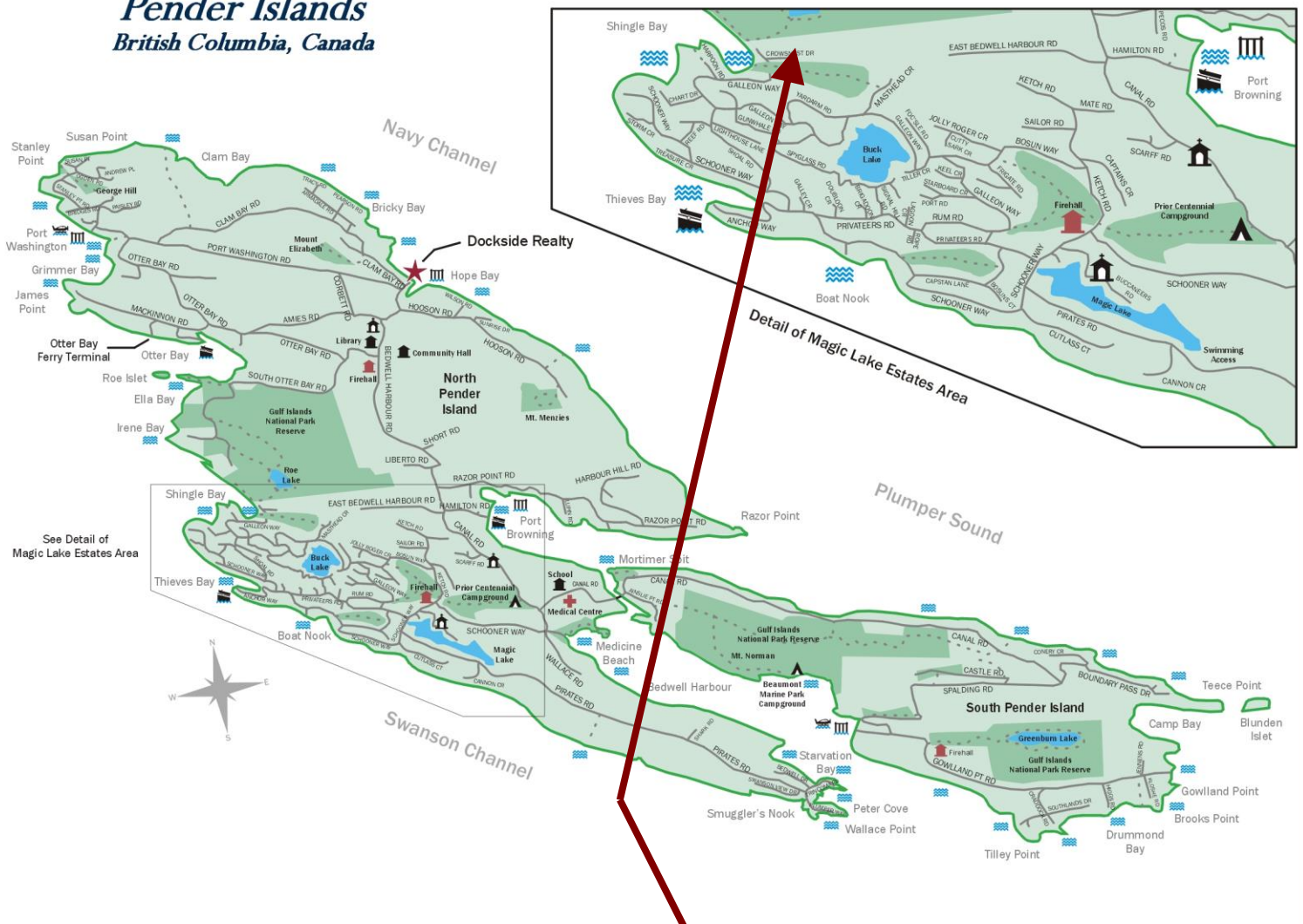


Hope Bay: 250-629-3166
Sidney: 250-656-5062
info@DocksideRealty.ca

Driftwood: 250-629-3383
Saturna: 250-539-2121
www.DocksideRealty.ca

Pender Islands Map

Pender Islands British Columbia, Canada



**Subject Property
2614 Crowsnest Dr**

- ★ Dockside Realty
- Public Wharf
- Boat Launch
- Float Plane
- Firehall
- Medical Centre
- Municipal
- Place of Worship
- Campground
- Walking Trail
- Ocean Access/View

Map courtesy of Dockside Realty. Design Copyright © 2012 Minsky Designs www.minskydesigns.com. All rights reserved.

DISCLAIMER: While every effort is made to provide reliable information, Dockside Realty Ltd. makes no representations or warranties as to the accuracy of this brochure.

All measurements are approximate and the buyer is responsible for verifying all data provided.



Hope Bay: 250-629-3166
Sidney: 250-656-5062
info@DocksideRealty.ca

Driftwood: 250-629-3383
Saturna: 250-539-2121
www.DocksideRealty.ca