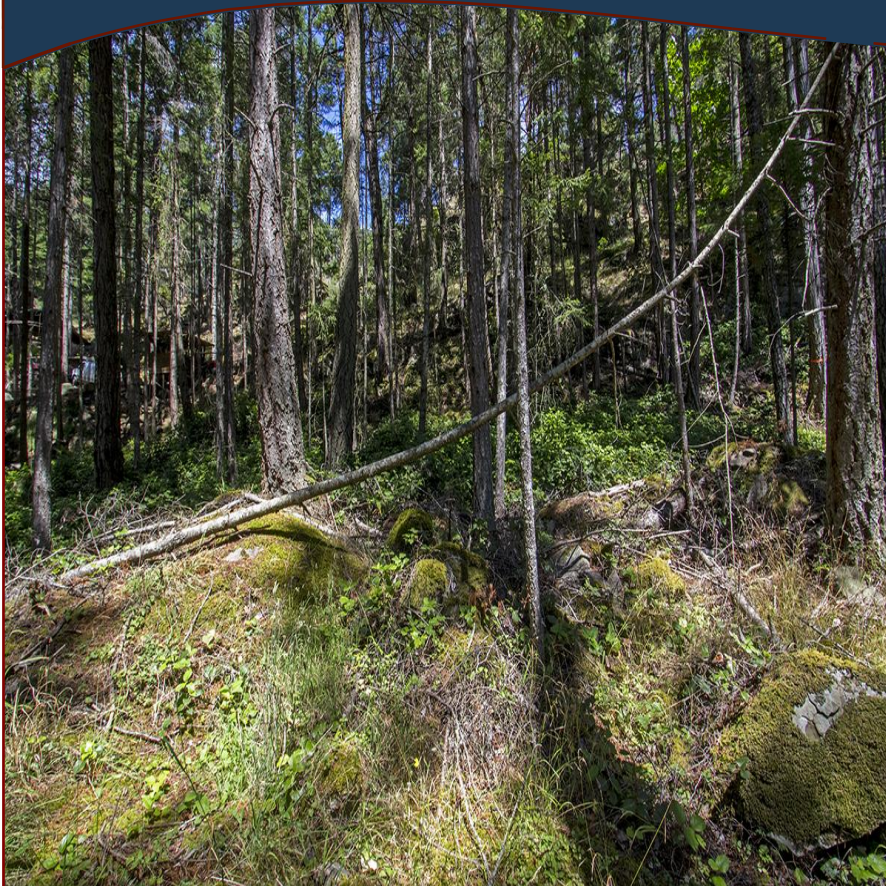


# South Facing Building Lot!



2640 Shoal Road



*South-facing with ocean glimpses, this is a unique, nicely treed property with Arbutus, Douglas firs, Western Maples and a beautiful understory of salal. Located within a 15 min walk to Thieves Bay Marina and the whale watching lookout. Services at road include municipal water, hydro, telephone, cable, and internet. Septic system required.*

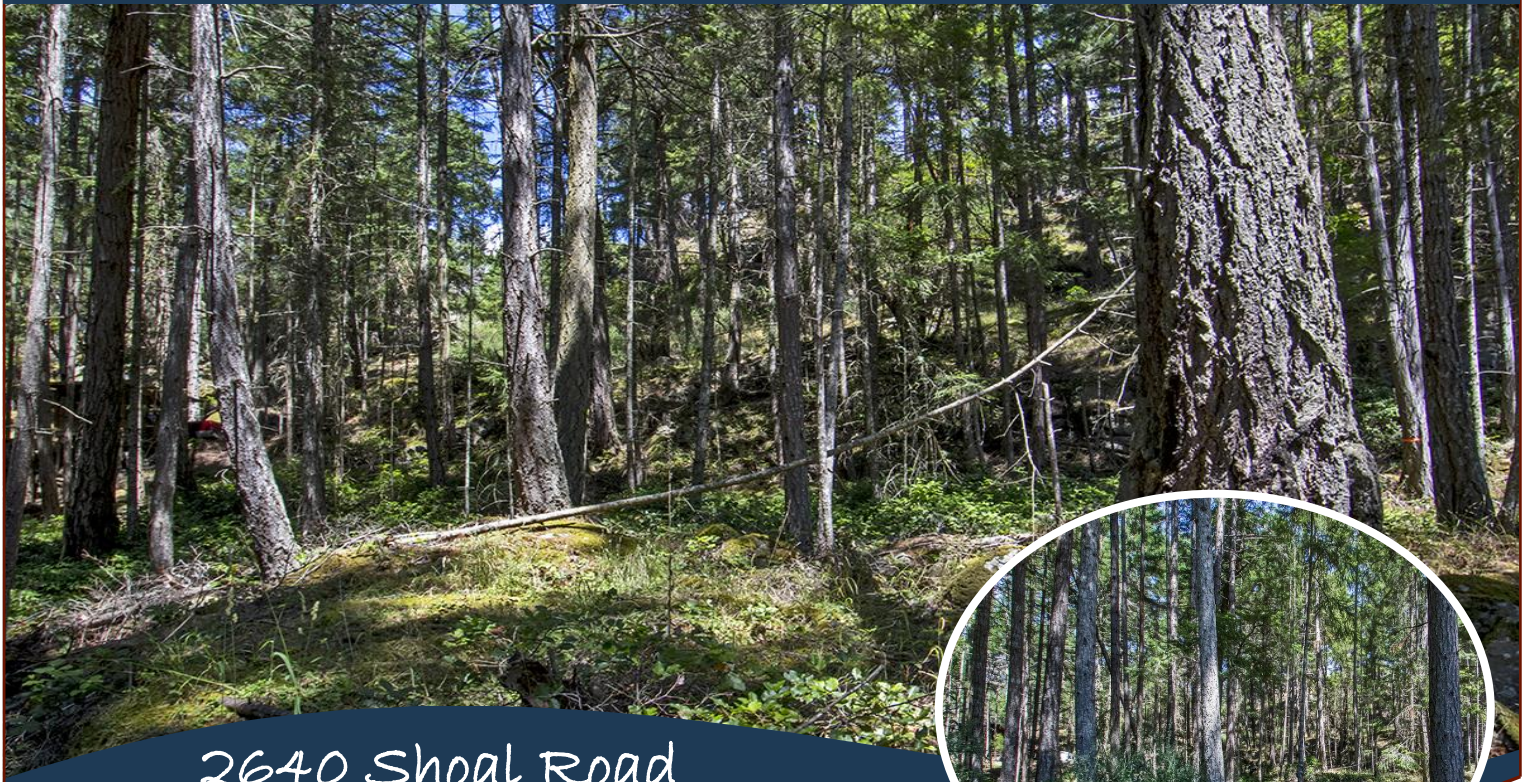


Hope Bay: 250-629-3166  
Sidney: 250-656-5062  
info@DocksideRealty.ca

Driftwood: 250-629-3383  
Saturna: 250-539-2121  
www.DocksideRealty.ca



# Property Details



2640 Shoal Road



**Lot Acres:** 0.63

**Water:** Municipal

**Waste:** Septic Field

**Services:** At lot line

**Driveway:** None

**Lot Features:**

- South-facing
- Ocean Glimpses
- Sloping
- Treed

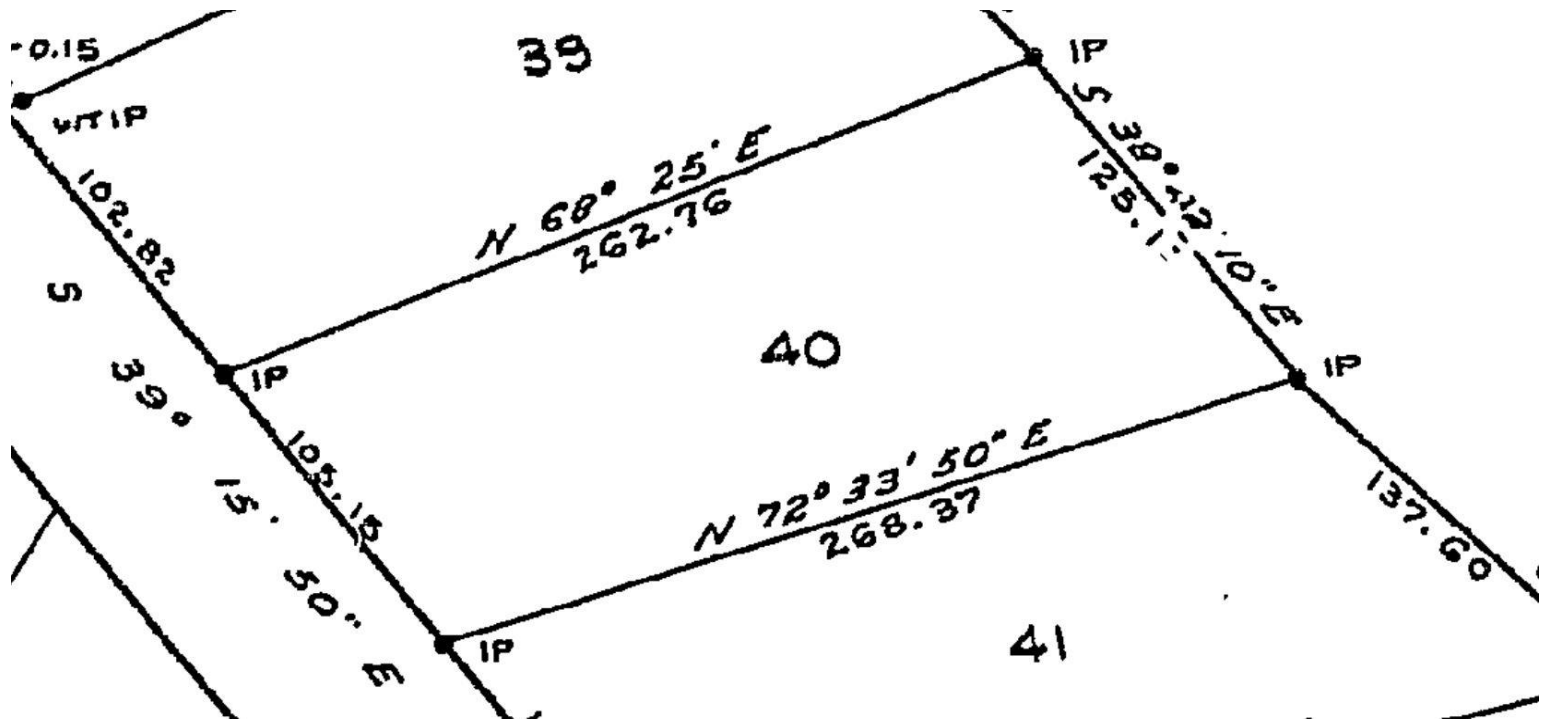


Hope Bay: 250-629-3166  
Sidney: 250-656-5062  
info@DocksideRealty.ca

Driftwood: 250-629-3383  
Saturna: 250-539-2121  
www.DocksideRealty.ca



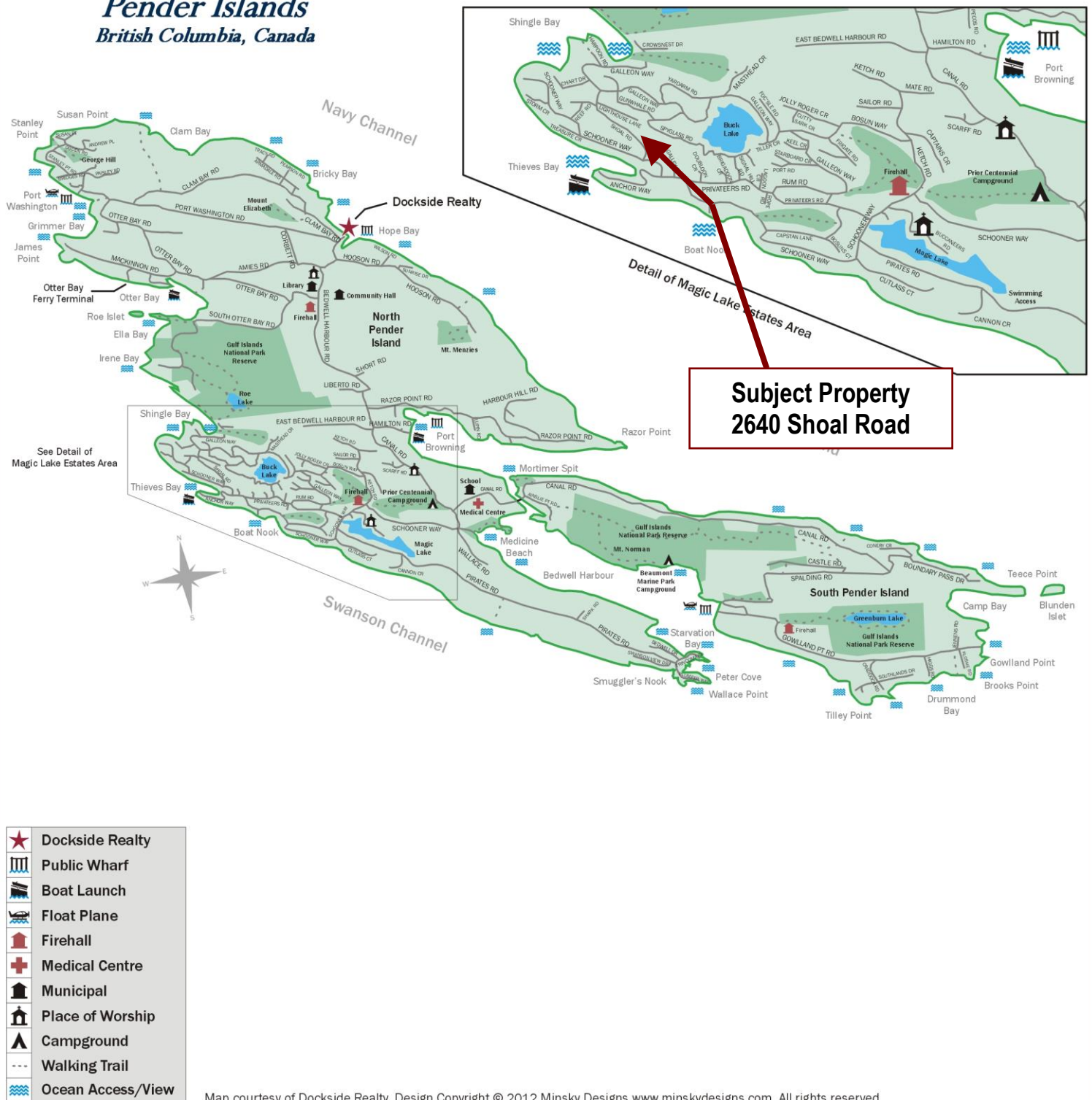
# Plot Plan and Aerial View





# Pender Islands Map

## Pender Islands British Columbia, Canada



**DISCLAIMER:** While every effort is made to provide reliable information, Dockside Realty Ltd. makes no representations or warranties as to the accuracy of this brochure.

All measurements are approximate and the buyer is responsible for verifying all data provided.



Hope Bay: 250-629-3166  
Sidney: 250-656-5062  
info@DocksideRealty.ca

Driftwood: 250-629-3383  
Saturna: 250-539-2121  
www.DocksideRealty.ca