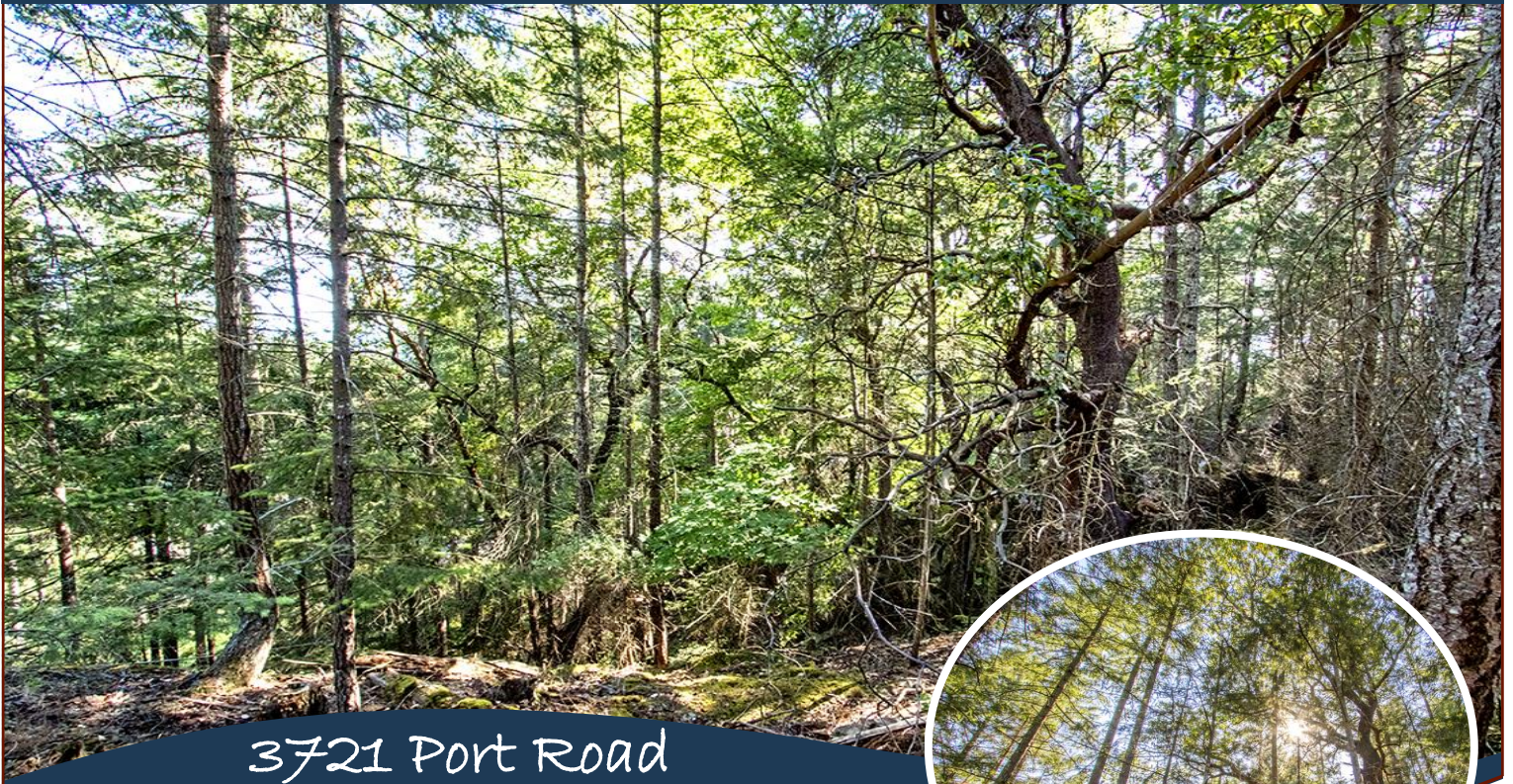


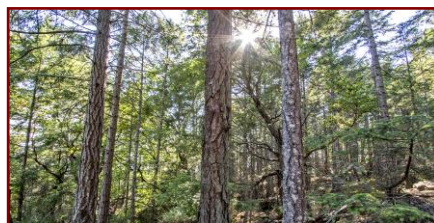
Lovely Lot with View Potential!



3721 Port Road



A lovely lot in a quiet cut-de-sac in Magic Lake Estates. Properties on the same side of the road enjoy incredible south west ocean views, looking towards the Olympic Mountain range. There are many walking trails nearby and the always enjoyable disc park is just down the road. Municipal water and sewer services are available for this property.



Hope Bay: 250-629-3166
Sidney: 250-656-5062
info@DocksideRealty.ca

Driftwood: 250-629-3383
Saturna: 250-539-2121
www.DocksideRealty.ca

Property Details



3721 Port Road



Lot Acres: 0.51

Water: Municipal

Waste: Sewer

Services: At lot line

Driveway: None

Bldg Scheme: No

Lot Features:

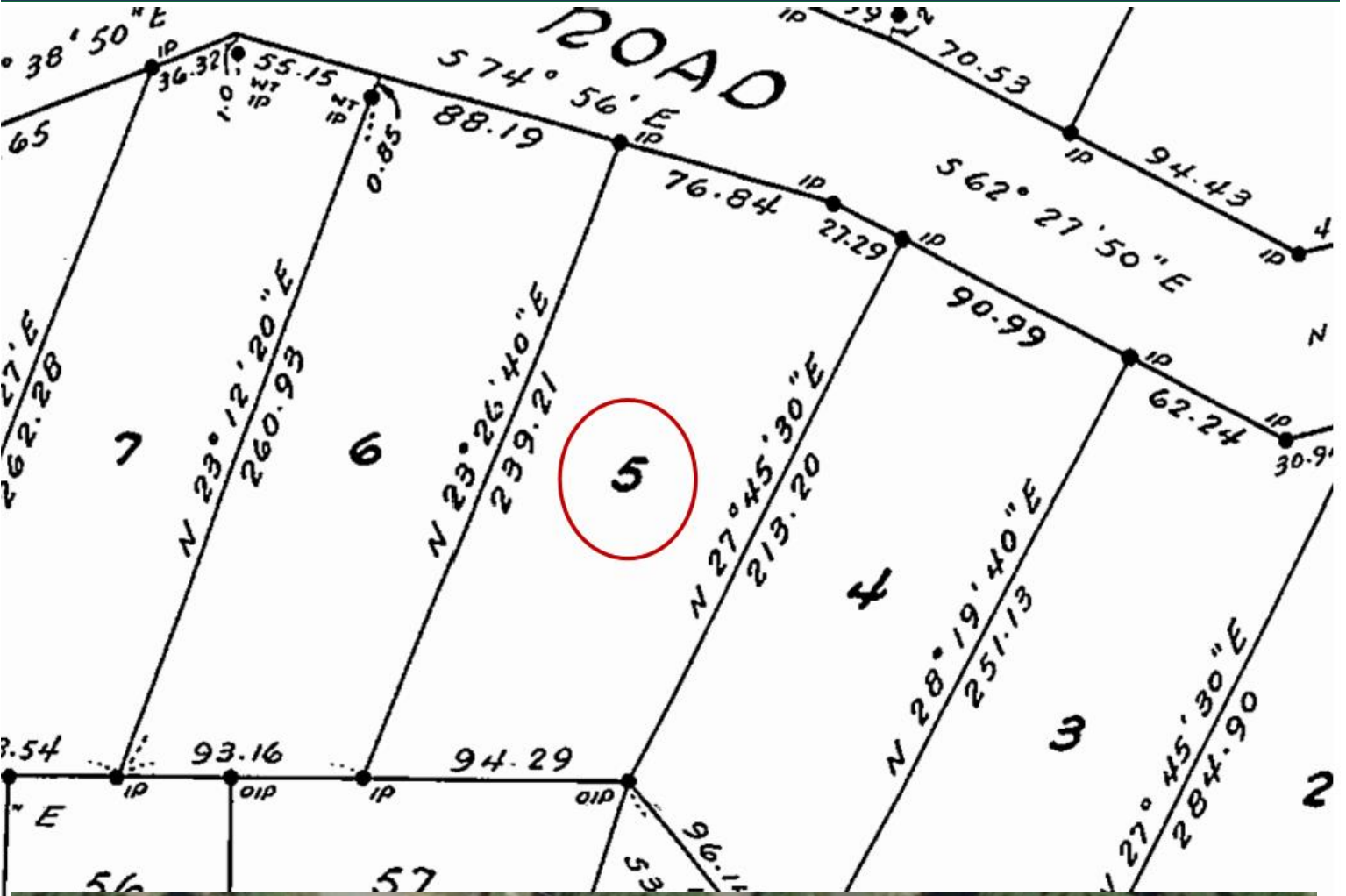
- Ocean View Potential
- Mountain View Potential
- Private Property
- Treed



Hope Bay: 250-629-3166
Sidney: 250-656-5062
info@DocksideRealty.ca

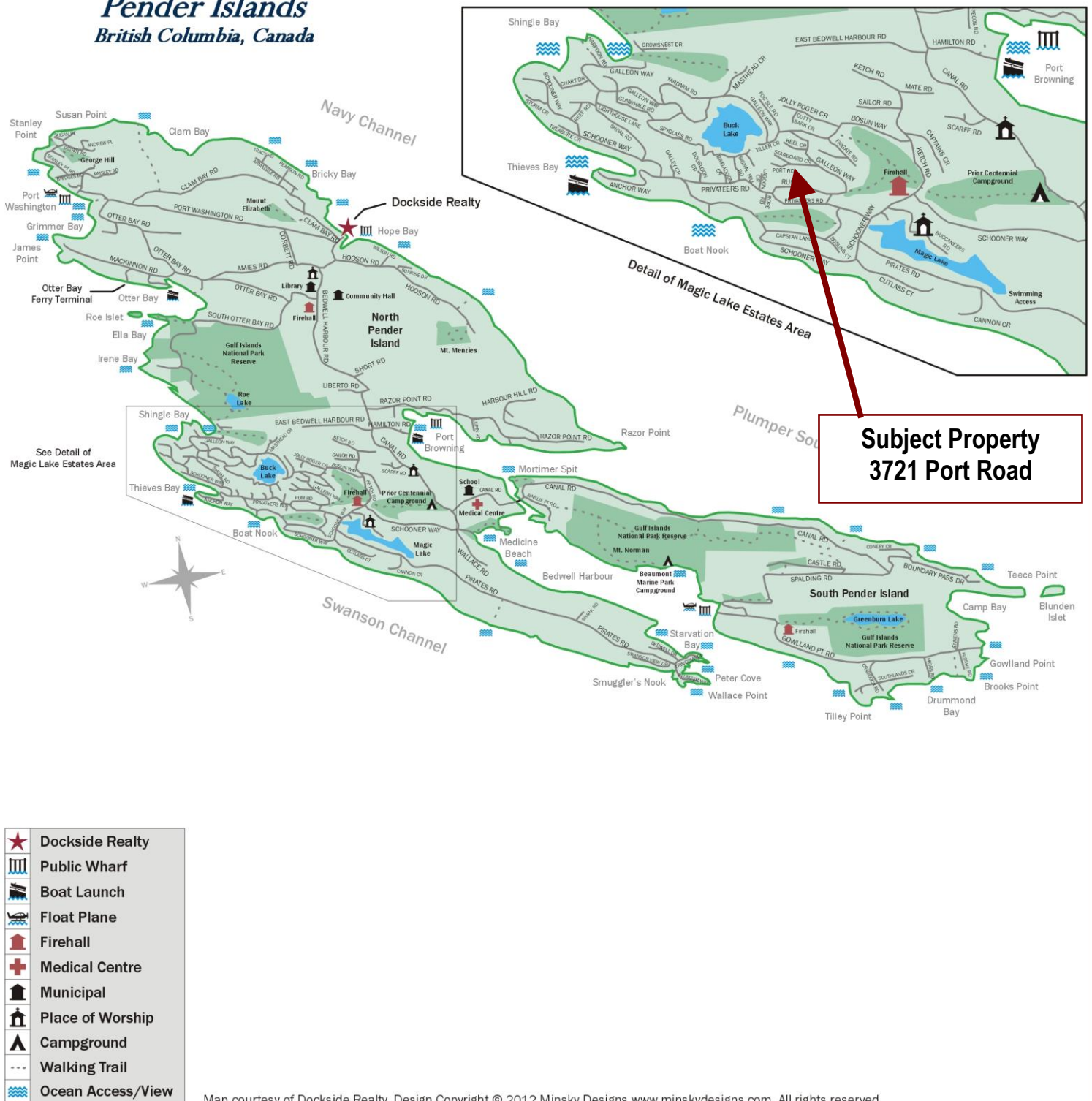
Driftwood: 250-629-3383
Saturna: 250-539-2121
www.DocksideRealty.ca

Plot Plan and Aerial View



Pender Islands Map

Pender Islands British Columbia, Canada



Map courtesy of Docks Realty. Design Copyright © 2012 Minsky Designs www.minskydesigns.com. All rights reserved.

DISCLAIMER: While every effort is made to provide reliable information, Docks Realty Ltd. makes no representations or warranties as to the accuracy of this brochure.

All measurements are approximate and the buyer is responsible for verifying all data provided.



Hope Bay: 250-629-3166
Sidney: 250-656-5062
info@DocksRealty.ca

Driftwood: 250-629-3383
Saturna: 250-539-2121
www.DocksRealty.ca