

Tumbo Channel Cottage



663 Tumbo Channel Rd



Tumbo Channel Panabode!

Rare find! A very cozy two bedroom panabode is waiting for you in the Tumbo Channel neighbourhood on Saturna Island. This cottage has been kept in ship shape, with a beautiful fenced-in garden and a cute little bunkhouse on this well-groomed lot. This is a low bank waterfront property with easy access to the shoreline and has a high tide boat launch ramp in place as well as a mooring buoy in front. The cottage features a large waterfront sundeck with a carport below. Easy access for trailer or boat via Salal Road. An abundance of fun for all awaits in this ocean playground.



Property Details



663 Tumbo Channel Rd



Year Built: 1968

Lot Acres: 0.38

Bedrooms: 2

Bathrooms: 1

Fin SqFt: 725

Unfin SqFt: 625

Bsmt: Unfinished

Bsmt Height: 5'6"

Water: Drilled well

Waste: Septic system

Foundation:

Concrete poured,
Concrete block

Roof: Asphalt shingle

Ext Fin: Log

Fuel: Wood, Electric

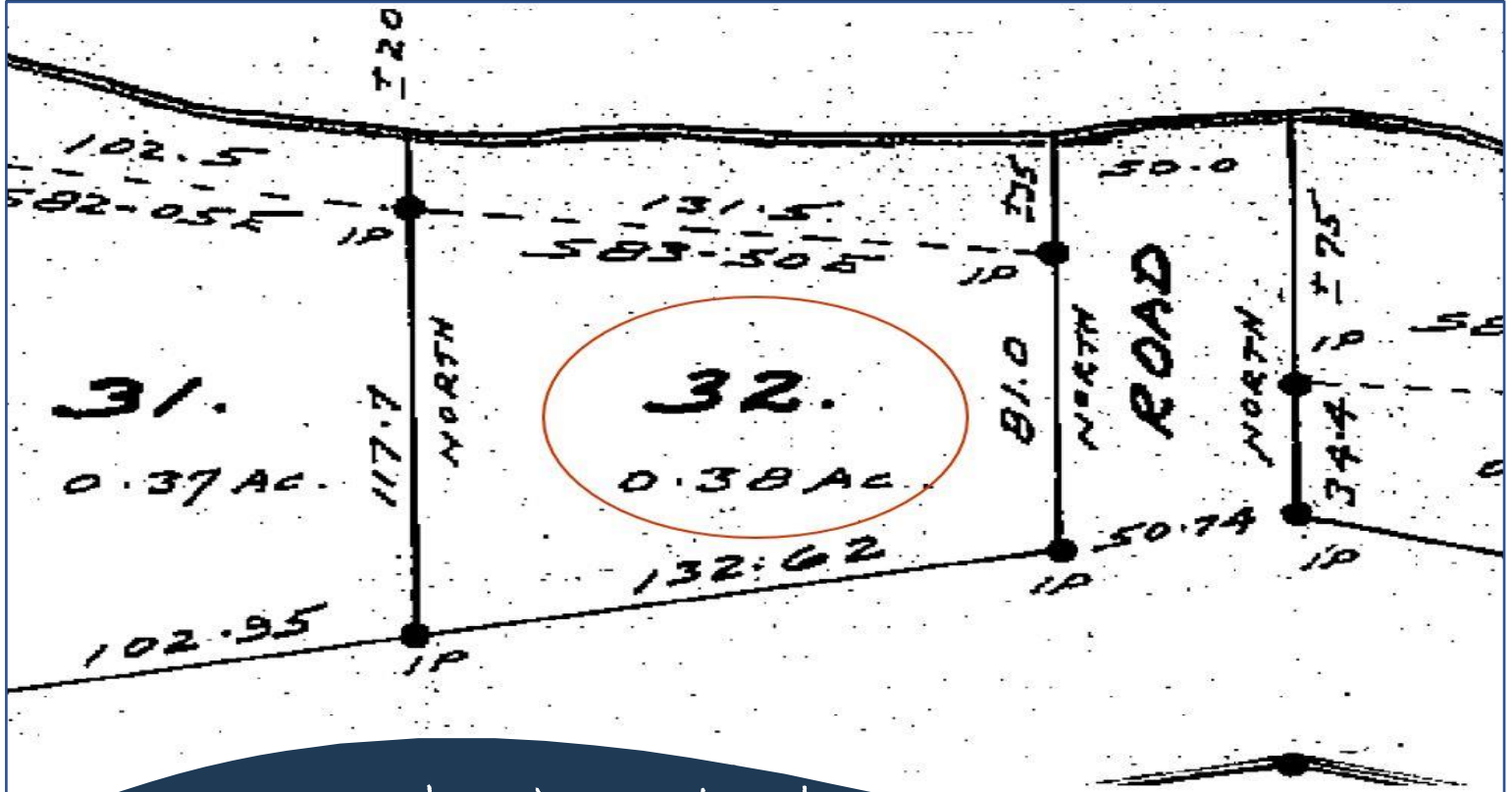
Heat: Wood Stove,
Baseboard

FP Location: Living
Room

Lot Features:

-Waterfront
-Landscaped
-Sunny

Plot Plan and Aerial View

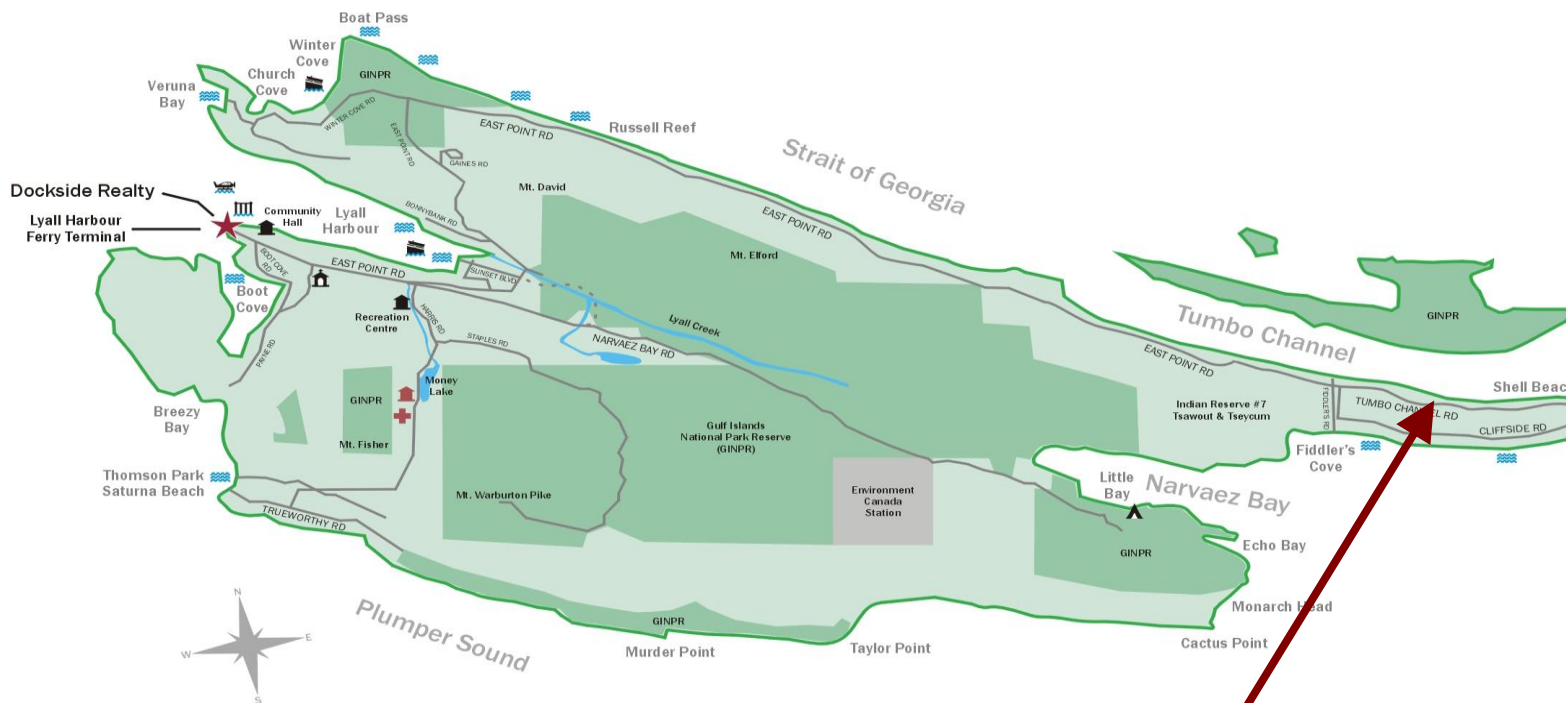


663 Tumbo Channel Rd



Google Area Map

Saturna Island British Columbia, Canada



Subject Property
663 Tumbo Channel Road

	Dockside Realty
	Public Wharf
	Boat Launch
	Float Plane
	Firehall
	Medical Centre
	Municipal
	Place of Worship
	Campground
	Walking Trail
	Ocean Access/View

DISCLAIMER: While every effort is made to provide reliable information, Dockside Realty Ltd. makes no representations or warranties as to the accuracy of this brochure. All measurements are approximate and the buyer is responsible for verifying all data provided.

Map courtesy of Dockside Realty. Design Copyright © 2012 Minsky Designs www.minskydesigns.com. All rights reserved.



MICHAEL VAUTOUR, LICENSED REALTOR®
Office: 250-539-2121 Cell: 250-818-3919 www.SaturnaRealty.ca