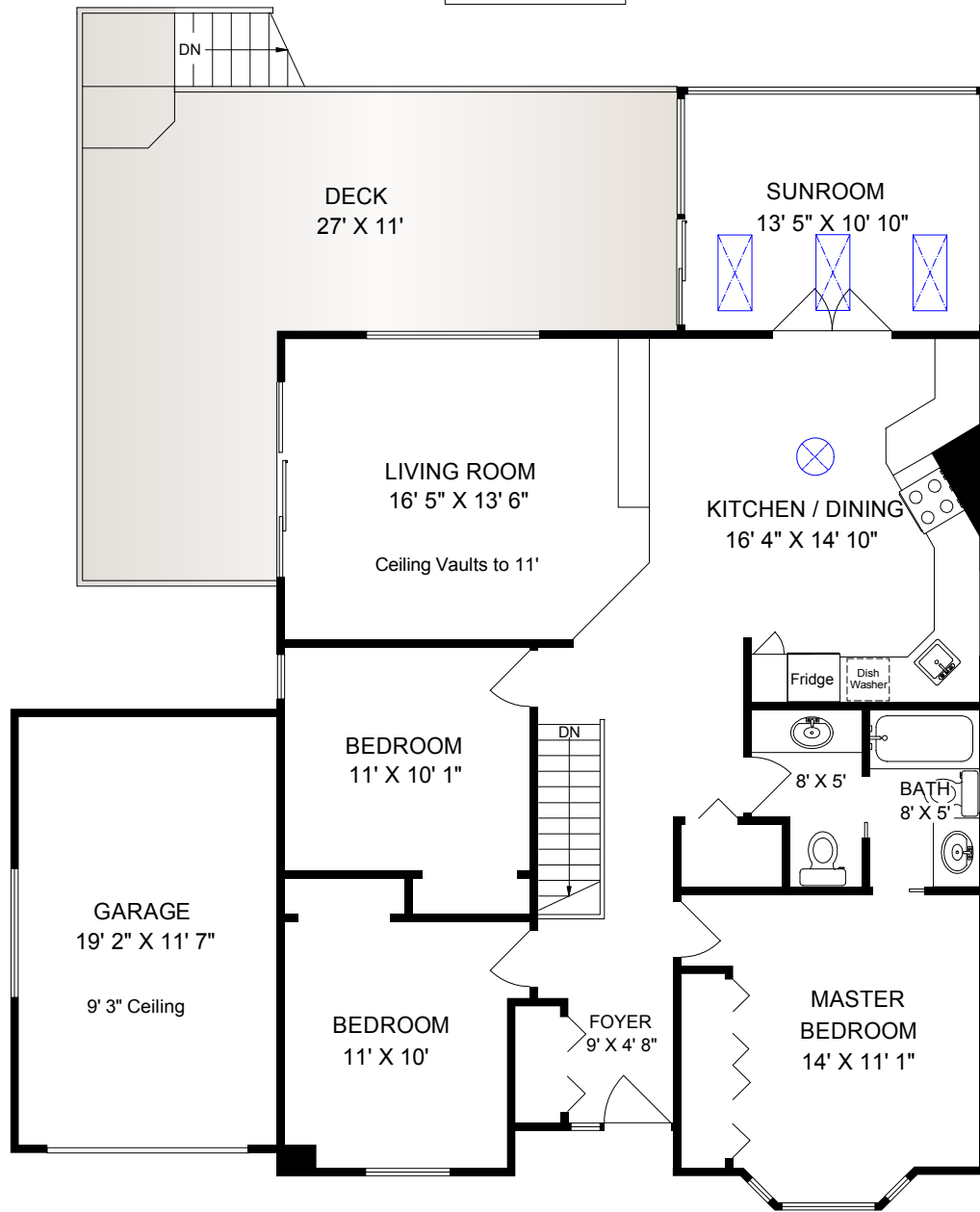
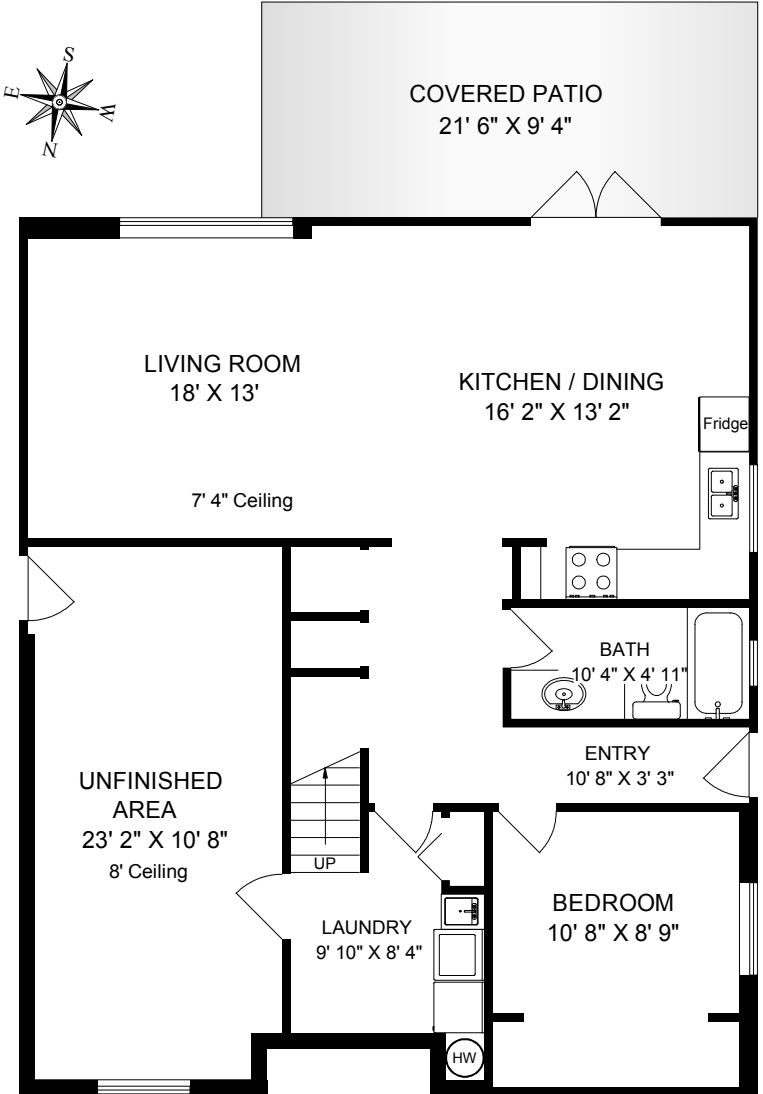
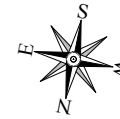


1345 TOPAZ AVENUE

OCEAN VIEWS



MAIN
1212 SQ. FT.



LOWER
1204 SQ. FT.

	FINISH SQ. FT.	UNFINISH SQ. FT.	TOTAL SQ. FT.
MAIN	1212		1212
LOWER	930	274	1204
TOTAL	2142	274	2416
GARAGE		240	240
DECK		400	400
PATIO		200	200

EXCLUSIVELY FOR SUZI JACK
DOCKSIDE REALTY LTD.

NOV. 3 2017

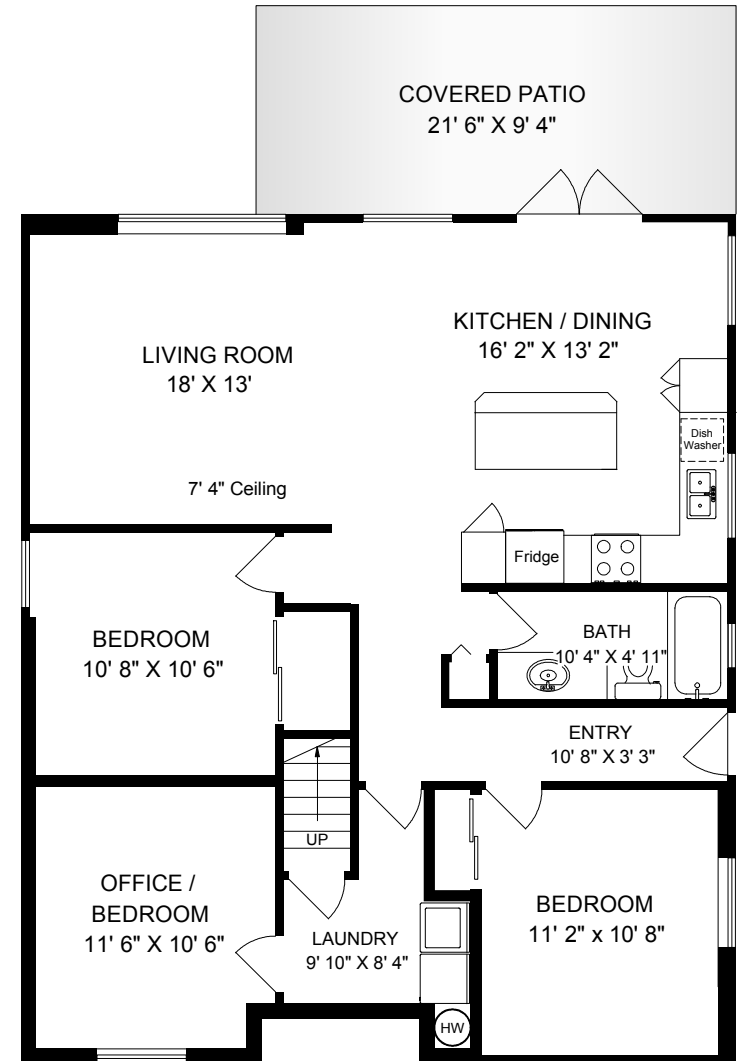
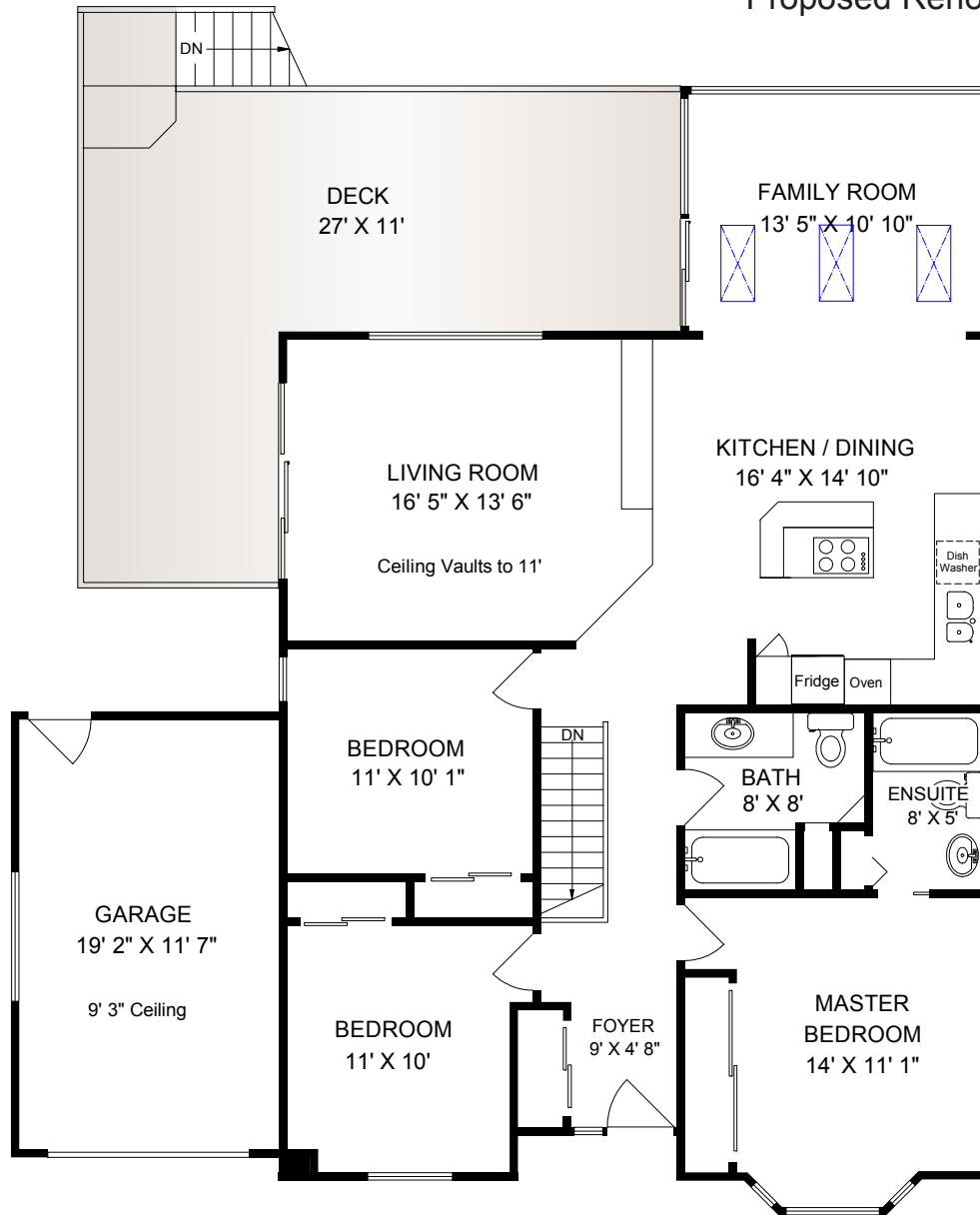
REF # 5202

Island Measure
Residential and Commercial Floor Plans
250-818-8273
islandmeasure.com

MEASUREMENTS MAY NOT BE 100% ACCURATE. IF CRITICAL, BUYER TO VERIFY.
ROOM SIZES ARE NOT USED TO CALCULATE AREA.
FLOOR PLANS ARE PROVIDED FOR CONVENIENCE ONLY.

1345 TOPAZ AVENUE

Proposed Renovation



0' SCALE 5'