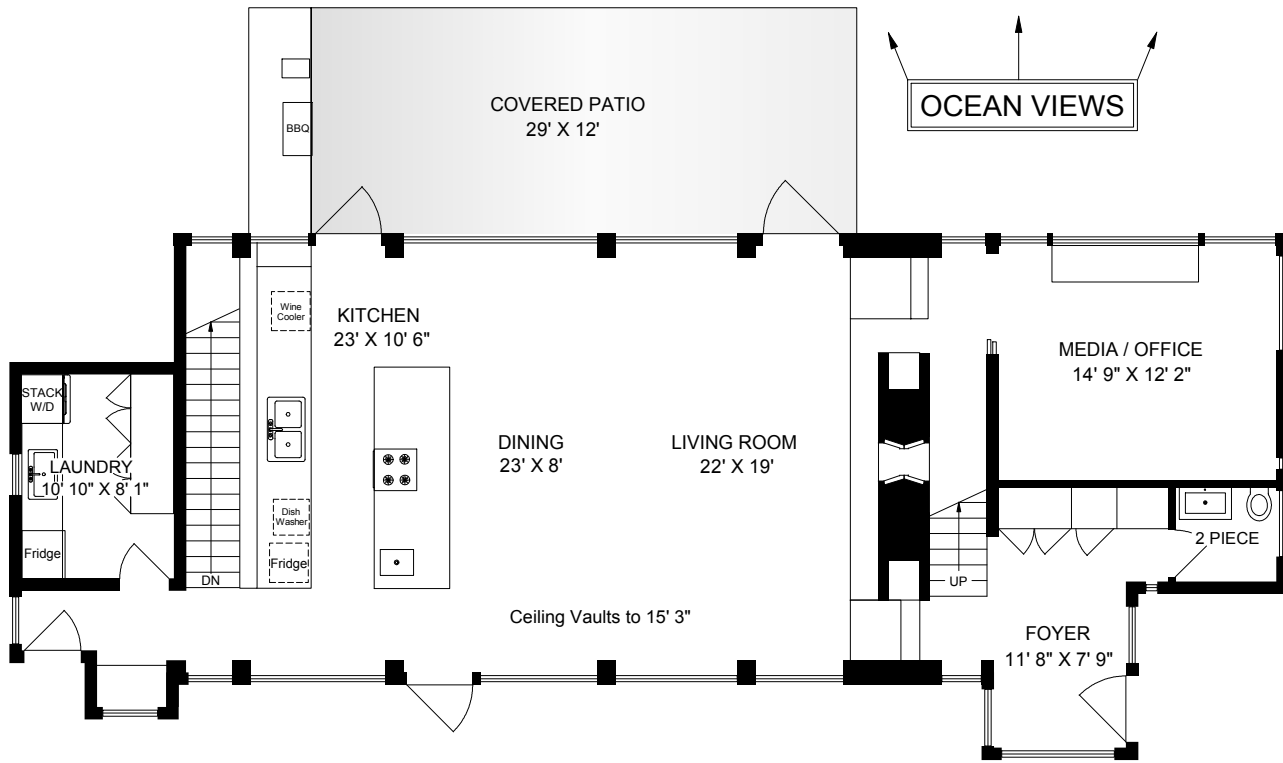
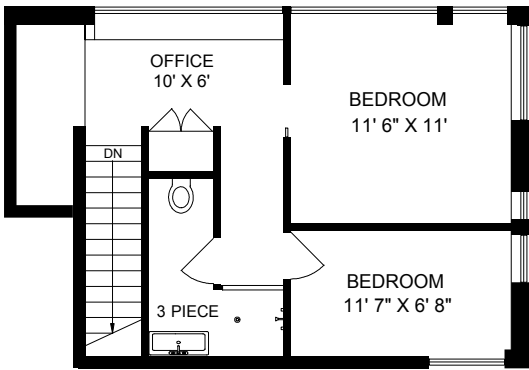


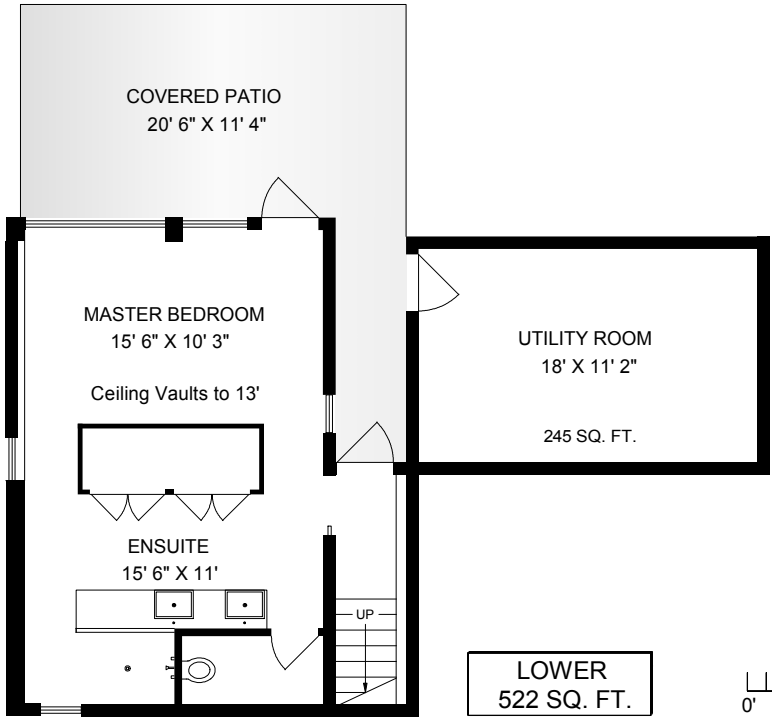
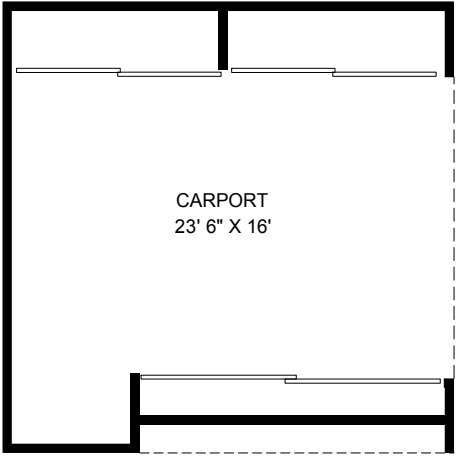
9809 SPALDING ROAD



MAIN
1568 SQ. FT.



UPPER
508 SQ. FT.



LOWER
522 SQ. FT.



	FINISH SQ. FT.	UNFINISH SQ. FT.	TOTAL SQ. FT.
MAIN	1568		1568
UPPER	508		508
LOWER	522	245	767
TOTAL	2598	245	2843
PATIOS		700	700

EXCLUSIVELY FOR SHERRIE BOYTE
DOCKSIDE REALTY LTD.

AUG. 19 2016

REF # 4919

Island Measure
Residential and Commercial Floor Plans
250-818-8273
islandmeasure.com

MEASUREMENTS MAY NOT BE 100% ACCURATE. IF CRITICAL, BUYER TO VERIFY.
ROOM SIZES ARE NOT USED TO CALCULATE AREA.
FLOOR PLANS ARE PROVIDED FOR CONVENIENCE ONLY.