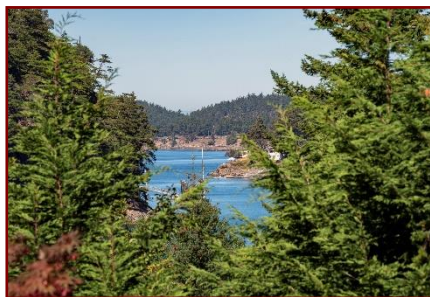


# Saturna Lodge & Restaurant



130 Payne Rd



**SATURNA LODGE & RESTAURANT;** a business opportunity & a lifestyle change in one neatly wrapped package! This stately farmhouse was converted into a lodging house before the turn of the century & is a long-established business to date. Lodging consists of 7 guest suites, 4 with ensuites on the upper level & 2 with ensuites & a third with shared washroom access with the media room on the garden level. The main level has an industrial kitchen commercially equipped with a walk-in cooler and pantry, a fully licensed dining room with a locally handcrafted bar. The Lodge is being offered fully furnished right down to the bed linens, towels & kitchen equipment. Lots of potential to host weddings & retreats as well as regular repeat guests coming to enjoy what Saturna Island has to offer. The restaurant has served breakfast to its lodging guests & can expand to additional dinner guests as desired. Lots of guest parking & shuttle; professionally established gardens; outdoor hot tub & ocean views.

# Property Details



*130 Payne Rd*



**Year Built:** 1925

**Lot Acres:** 2.24

**Bedrooms:** 7

**Bathrooms:** 9

**Fin SqFt:** 4600

**Unfin SqFt:** 224

**Bsmt:** Finished, walk-out with windows

**Bsmt Height:** 8ft

**Water:** Municipal

**Waste:** Septic system

**Foundation:** Concrete Poured

**Roof:** Metal

**Ext Fin:** Wood

**Fuel:** Propane, electric

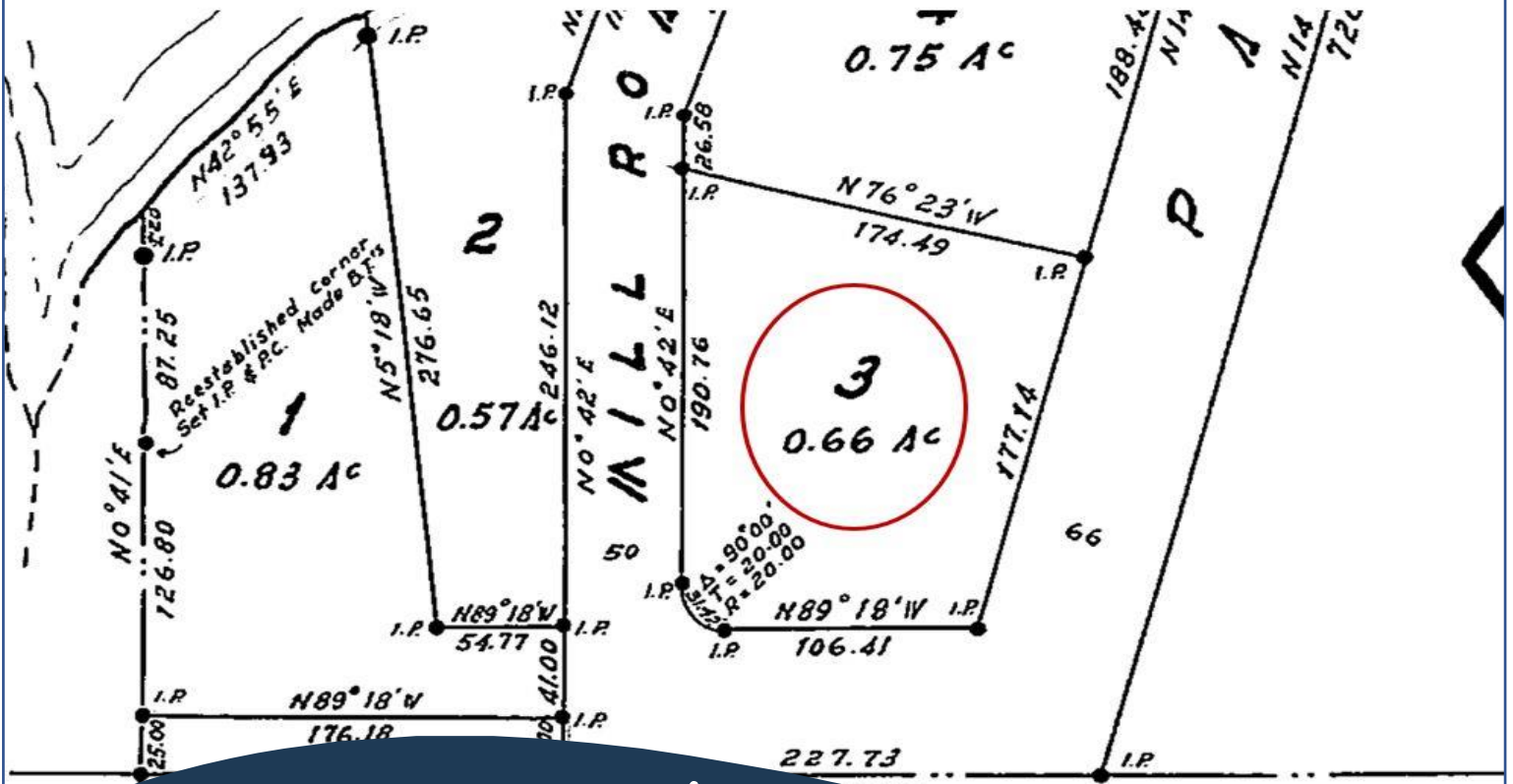
**Heat:** Propane FP, Baseboard

**FP Location:** Living Room

**Lot Features:**

- Ocean View
- Established business
- Gardens & balconies

# Plot Plan and Aerial View

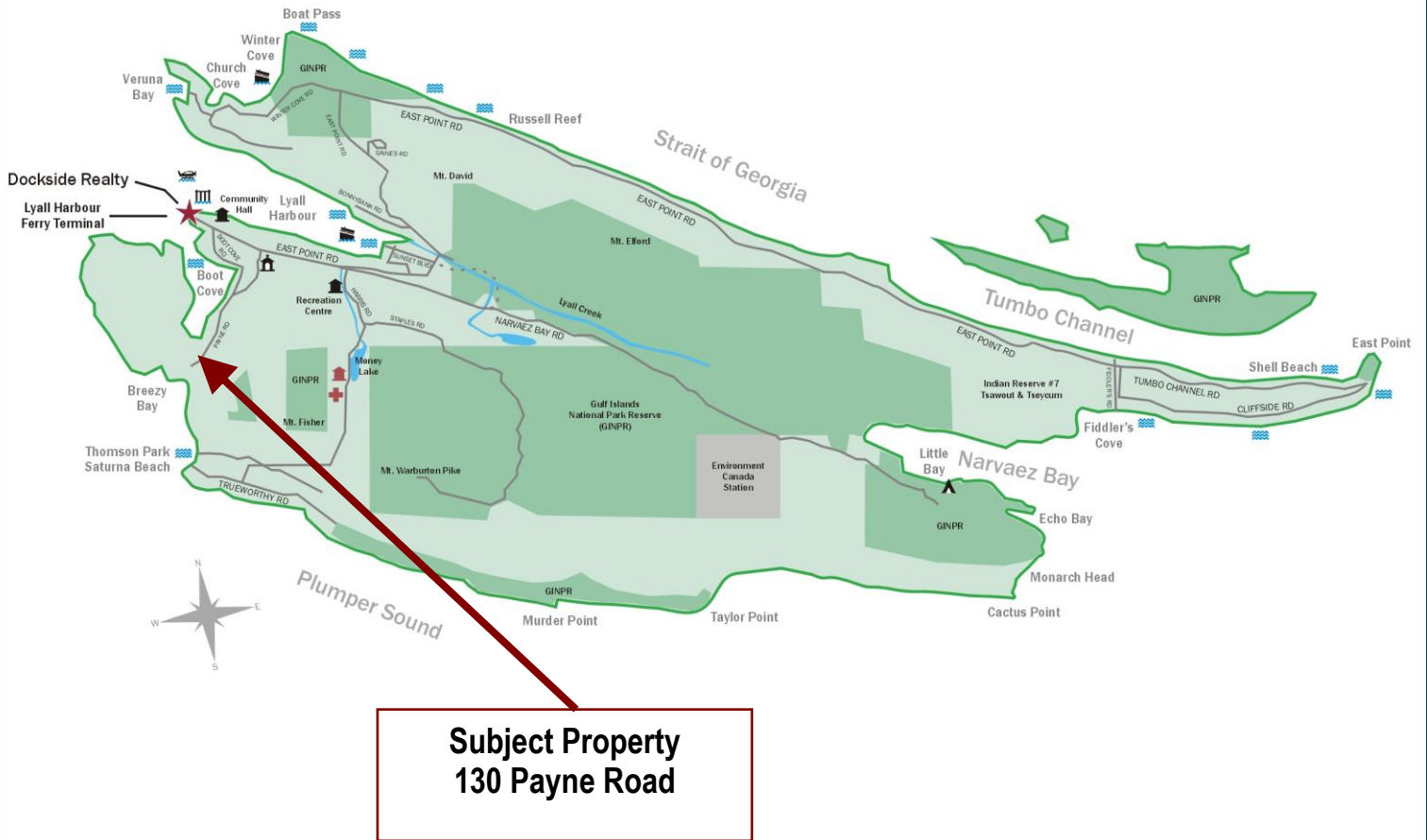


130 Payne Rd



# Google Area Map

## Saturna Island British Columbia, Canada



- Dockside Realty
- Public Wharf
- Boat Launch
- Float Plane
- Firehall
- Medical Centre
- Municipal
- Place of Worship
- Campground
- Walking Trail
- Ocean Access/View

Map courtesy of Dockside Realty. Design Copyright © 2012 Minsky Designs www.minskydesigns.com. All rights reserved.

***DISCLAIMER:*** While every effort is made to provide reliable information, Dockside Realty Ltd. makes no representations or warranties as to the accuracy of this brochure.  
All measurements are approximate and the buyer is responsible for verifying all data provided.



MICHAEL VAUTOUR, LICENSED REALTOR®  
Office: 250-539-2121 Cell: 250-818-3919 www.SaturnaRealty.ca