

Peaceful & Private!



Perched at the top of long driveway on a gently sloping ridge, this 2BR, 1BA, approximately 820-sqft manufactured home has been well maintained & recently updated with a final occupancy permit in place. The elevated location combined with a natural rock outcropping offers privacy from the road below & the neighbours on both sides. From the cozy living room, you overlook the sizable, fenced gardens & distant mountains. This peaceful setting will allow you to live quietly, comfortably & sustainably. Established plantings include apple, cherry, plum, fig & Asian pear fruit trees, plus raspberry bushes & elephant garlic. Electrical service & septic system both recently installed with all final permits completed. Zoning allows for an additional detached accessory building for a garage, studio, or workshop. Live the idyllic island life at a very affordable price. This represents an excellent investment opportunity to get your foot in the door in the red-hot Gulf Island Real Estate Market!



Property Details



2620 Gunwhale Rd



Year Built (est):
1976

Lot Acres: 0.70

Bedrooms: 2

Bathrooms: 1

Fin SqFt: 828

Unfin SqFt: 0

Water: Municipal

Waste: Septic

Driveway: Dirt/Gravel

Foundation:
Pillar/Post/Pier

Roof: Asphalt torch
On

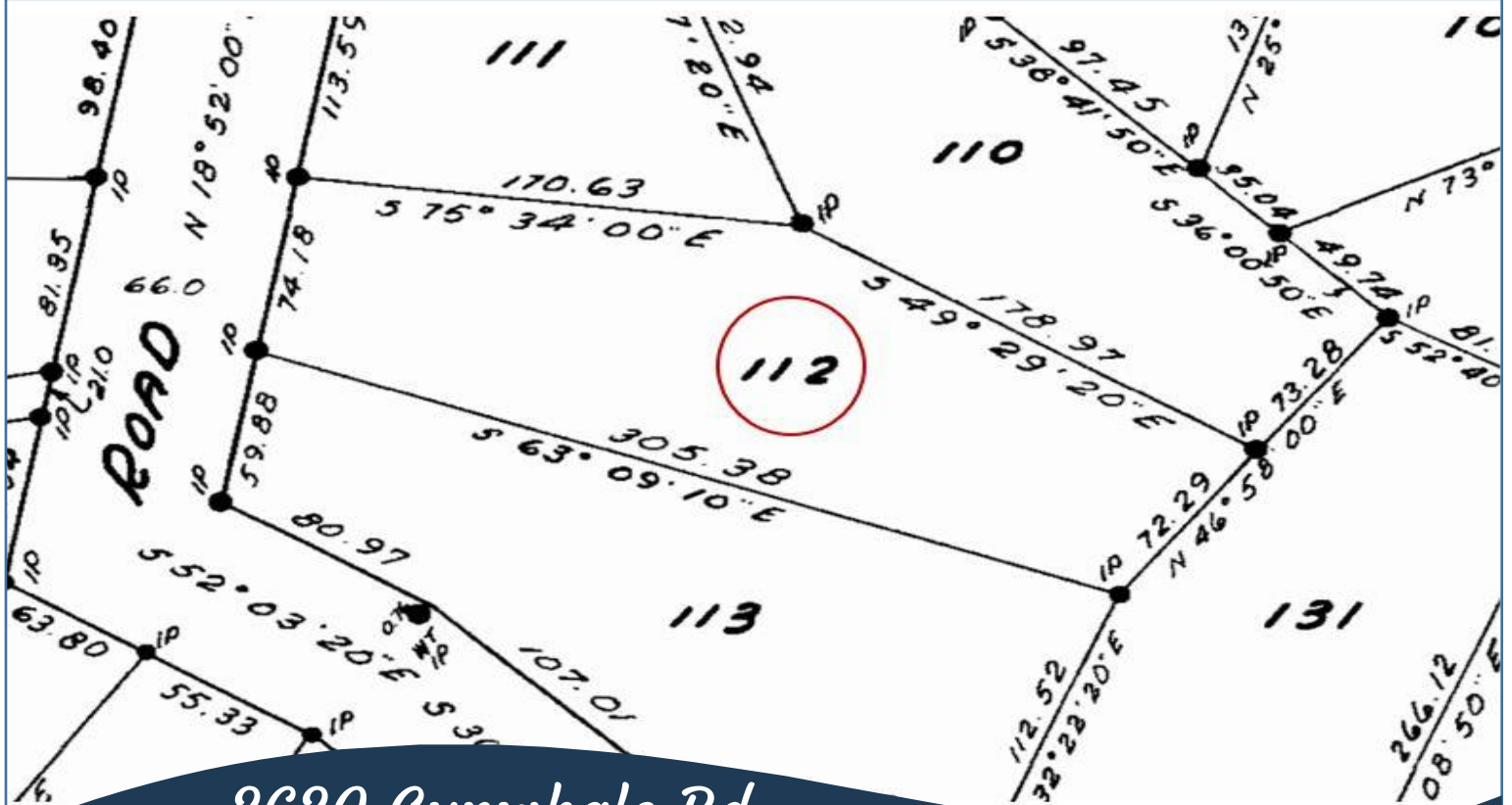
Ext Fin: Metal

Heat: Electric,
Forced Air, Oil

Lot Features:

- Partial fencing
- Garden
- Low Maintenance Yard
- Established fruit trees
- Magic Lake Estates with access to Thieves Bay marina & tennis courts

Plot Plan and Aerial View

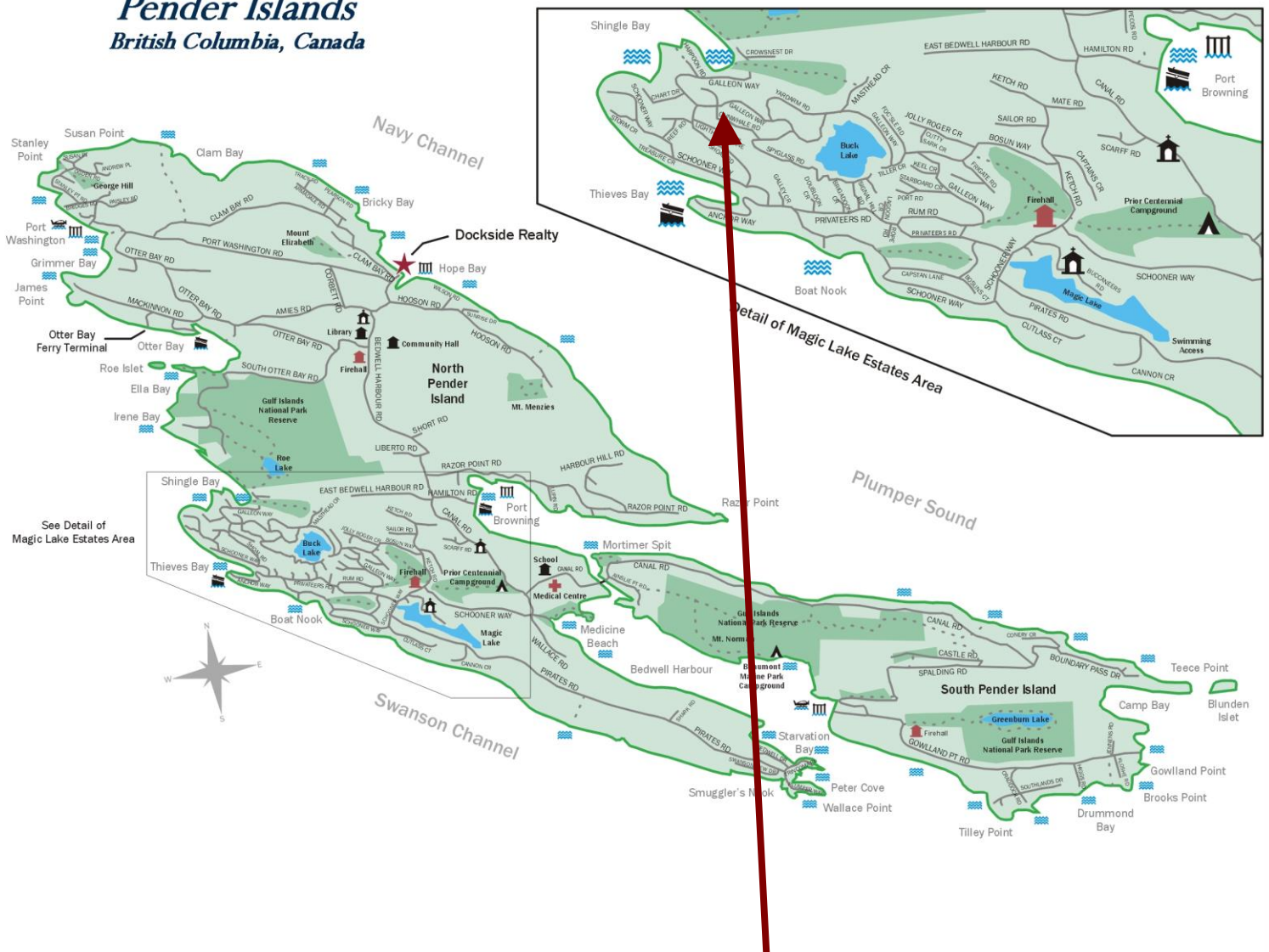


2620 Gunwhale Rd



Pender Islands Map

Pender Islands British Columbia, Canada



- ★ Docksde Realty
- Public Wharf
- Boat Launch
- Float Plane
- Firehall
- Medical Centre
- Municipal
- Place of Worship
- Campground
- Walking Trail
- Ocean Access/View

**Subject Property
2620 Gunwhale Rd**

Map courtesy of Docksde Realty. Design Copyright © 2012 Minsky Designs www.minskydesigns.com. All rights reserved.

DISCLAIMER: While every effort is made to provide reliable information, Docksde Realty Ltd. makes no representations or warranties as to the accuracy of this brochure.

All measurements are approximate and the buyer is responsible for verifying all data provided.

Pender Island • Saturna Island • Vancouver Island

www.DocksdeRealty.ca

info@DocksdeRealty.ca • 250-629-3383

Docksde Realty
Gulf Islands • Vancouver Island