

# Westcoast Island Cabin!



2793 Schooner Way



**Boondock Solstice Westcoast Island Cabin!** Constructed in 2019 with final occupancy permit & new home warranty in place, this absolutely delightful approximately 650 sq ft, 1BR, 1BA getaway retreat will soothe all of your senses & calm your nerves from the moment you enter the fully fenced, private, 0.40 acre property. High vaulted ceilings & thoughtful placement of windows throughout create the feeling of a much larger footprint. Make your morning coffee in the cozy nook in the kitchen, relax & bask in the southern sun on the giant wrap-around deck, or soak in the hot tub on those starry summer nights. A beautiful bunky, currently set up as an awesome home office, doubles as the perfect place for overnight guests. Just a stone's throw to nearby Thieves Bay Marina, offering one of the most affordable sheltered private moorages in BC, as well as land-based whale watching that will take your breath away! Offered turn-key with most furnishings & loads of extras. Just move in & enjoy!





# Property Details



2793 Schooner Way



**Year Built (est):**  
2019

**Lot Acres:** 0.40

**Bedrooms:** 2

**Bathrooms:** 1

**Fin SqFt:** 750

**Unfin SqFt:** 625

**Bsmt:** 5' crawl space,  
walk-out access

**Water:** Municipal

**Waste:** Septic system

**Driveway:** Dirt

**Foundation:**  
Concrete Poured

**Roof:** Metal

**Ext Fin:** Wood

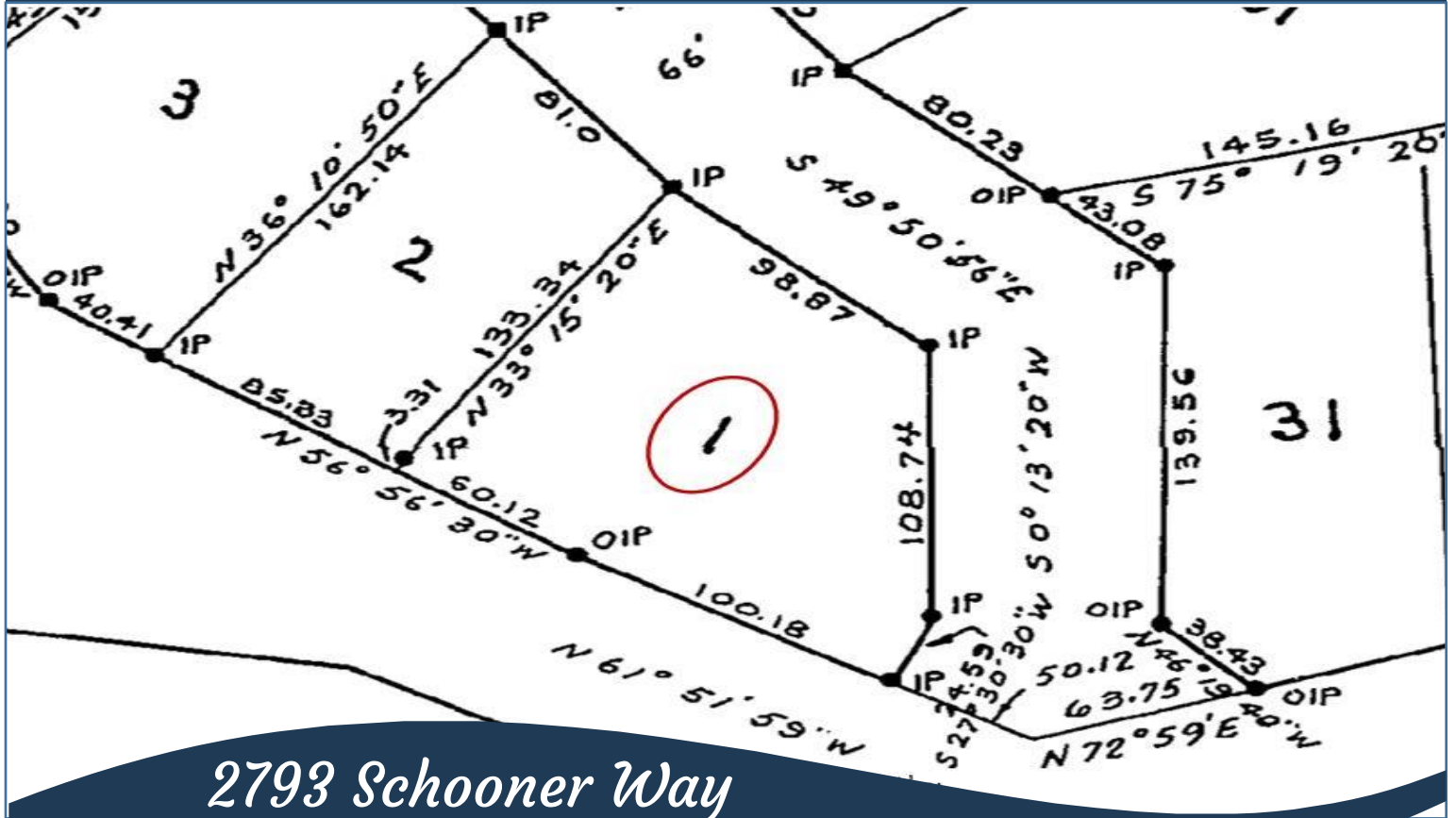
**Heat:** Baseboard,  
Electric, Wood

**Lot Features:**

- Southern exposure
- Private
- Large deck
- Separate studio
- Magic Lake Estates with access to Thieves Bay marina & tennis courts



# Plot Plan and Aerial View



2793 Schooner Way



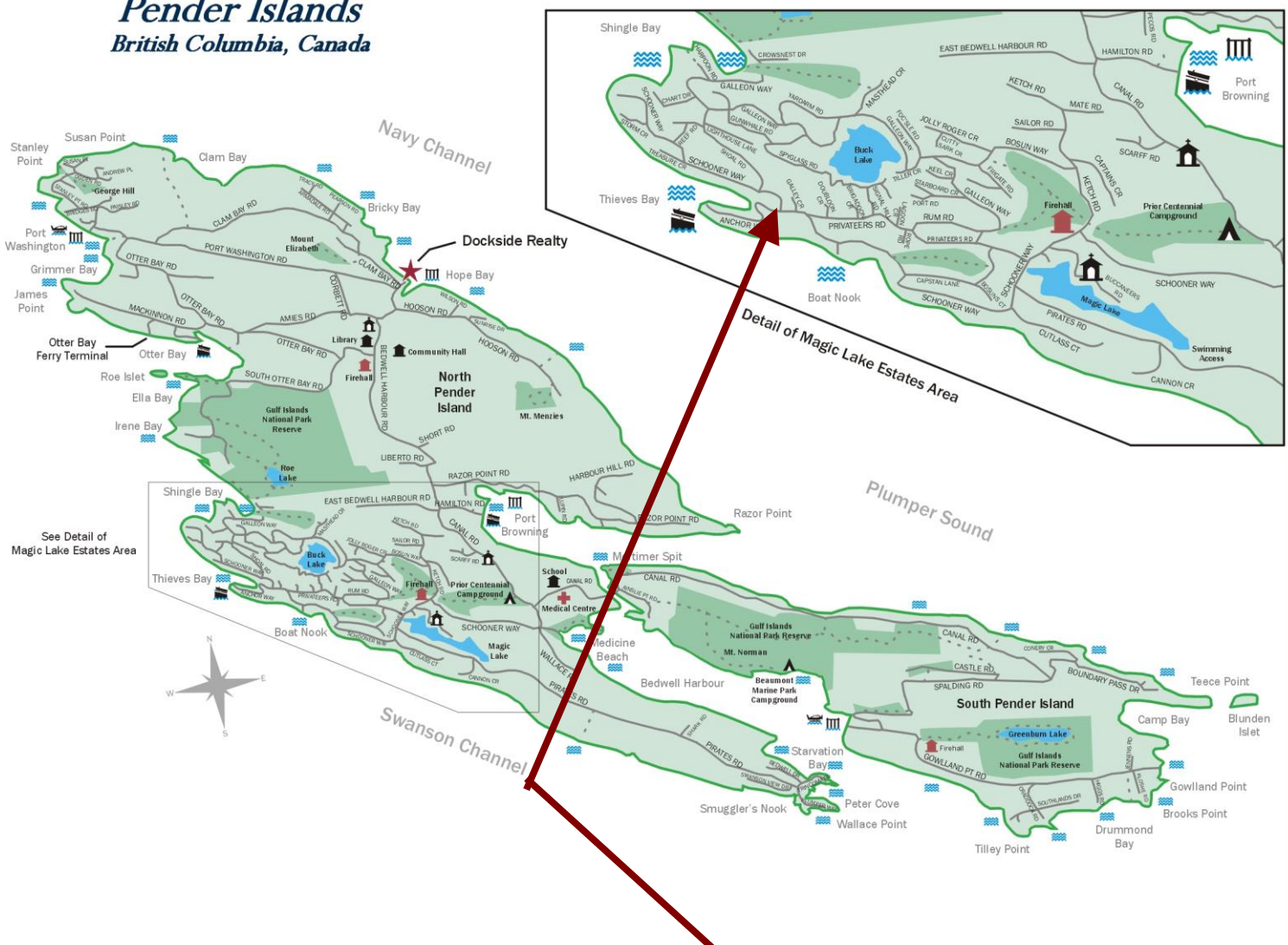
Pender Island • Saturna Island • Vancouver Island

[www.DocksdeRealty.ca](http://www.DocksdeRealty.ca)

[info@DocksdeRealty.ca](mailto:info@DocksdeRealty.ca) • 250-629-3383

# Pender Islands Map

## Pender Islands British Columbia, Canada



**Subject Property  
2793 Schooner Way**

- Dockside Realty
- Public Wharf
- Boat Launch
- Float Plane
- Firehall
- Medical Centre
- Municipal
- Place of Worship
- Campground
- Walking Trail
- Ocean Access/View

Map courtesy of Dockside Realty. Design Copyright © 2012 Minsky Designs www.minskydesigns.com. All rights reserved.

**DISCLAIMER:** While every effort is made to provide reliable information, Dockside Realty Ltd. makes no representations or warranties as to the accuracy of this brochure.

All measurements are approximate and the buyer is responsible for verifying all data provided.



Pender Island • Saturna Island • Vancouver Island  
[www.DocksideRealty.ca](http://www.DocksideRealty.ca)  
[info@DocksideRealty.ca](mailto:info@DocksideRealty.ca) • 250-629-3383