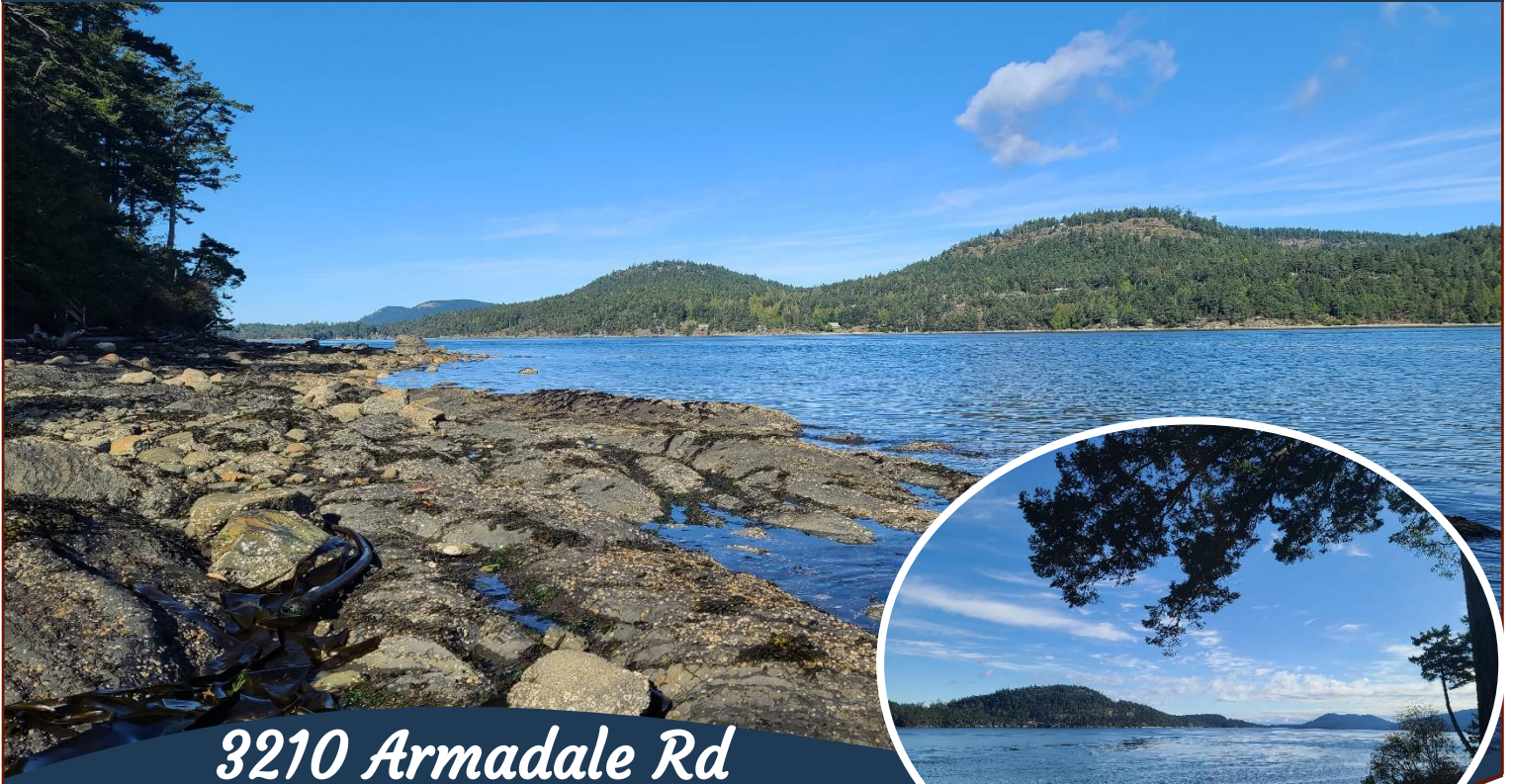


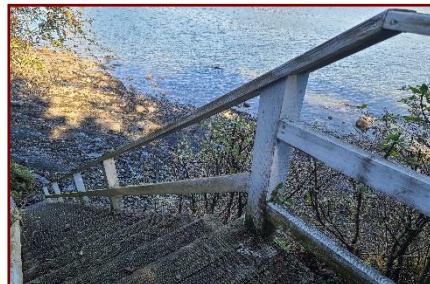
Perfect Gulf Island Escape!



3210 Armadale Rd



Over two gently rolling acres of Pacific Northwest, unspoiled oceanfront in one of the most desirable areas on Pender Island. A solid set of stairs lead you down to your own private walk on, oceanfront paradise. Brave the clean crisp Navy Channel waters, or set your kayak out on a calm day, destination unforgettable experiences in unspoiled BC nature. The cottage is an ideal place to enjoy the west coast, with views of the surrounding Gulf Islands, and Mount Baker in the distance. It's bright, open, clean, with an easy living layout. It's been lovingly maintained, and designed for minimal maintenance. It's one level living. A warm, bright, private place to retreat, and relax. Along with 528sq.ft. of deck to entertain, barbeque, and soak in the privacy, the seclusion, and the beauty.



Property Details



3210 Armadale Rd



Year Built (est): 1995

Lot Acres: 2.15

Bedrooms: 3

Bathrooms: 1

Fin SqFt: 1,152

Unfin SqFt: 0

Bsmt: 7' crawl space

Water: Drilled Well

Waste: Septic System

Driveway: Gravel/dirt

Foundation:

Concrete Poured

Roof: Metal

Ext Fin: Wood

Fuel: Electric, Wood

Heat: Baseboard, Wood

Lot Features:

- Acreage
- Oceanfront
- Views
- Total Privacy
- Stairs to beach

Plot Plan and Aerial View



3210 Armadale Rd

Aerial - 3210 Armadale



This property has recently been subdivided into two lots. See Plot plan for accurate outline.



114.7 0 57.3 114.7 Meters

WGS_1984_Web_Mercator_Auxiliary_Sphere
© Islands Trust

1:2,257

October 13, 2020

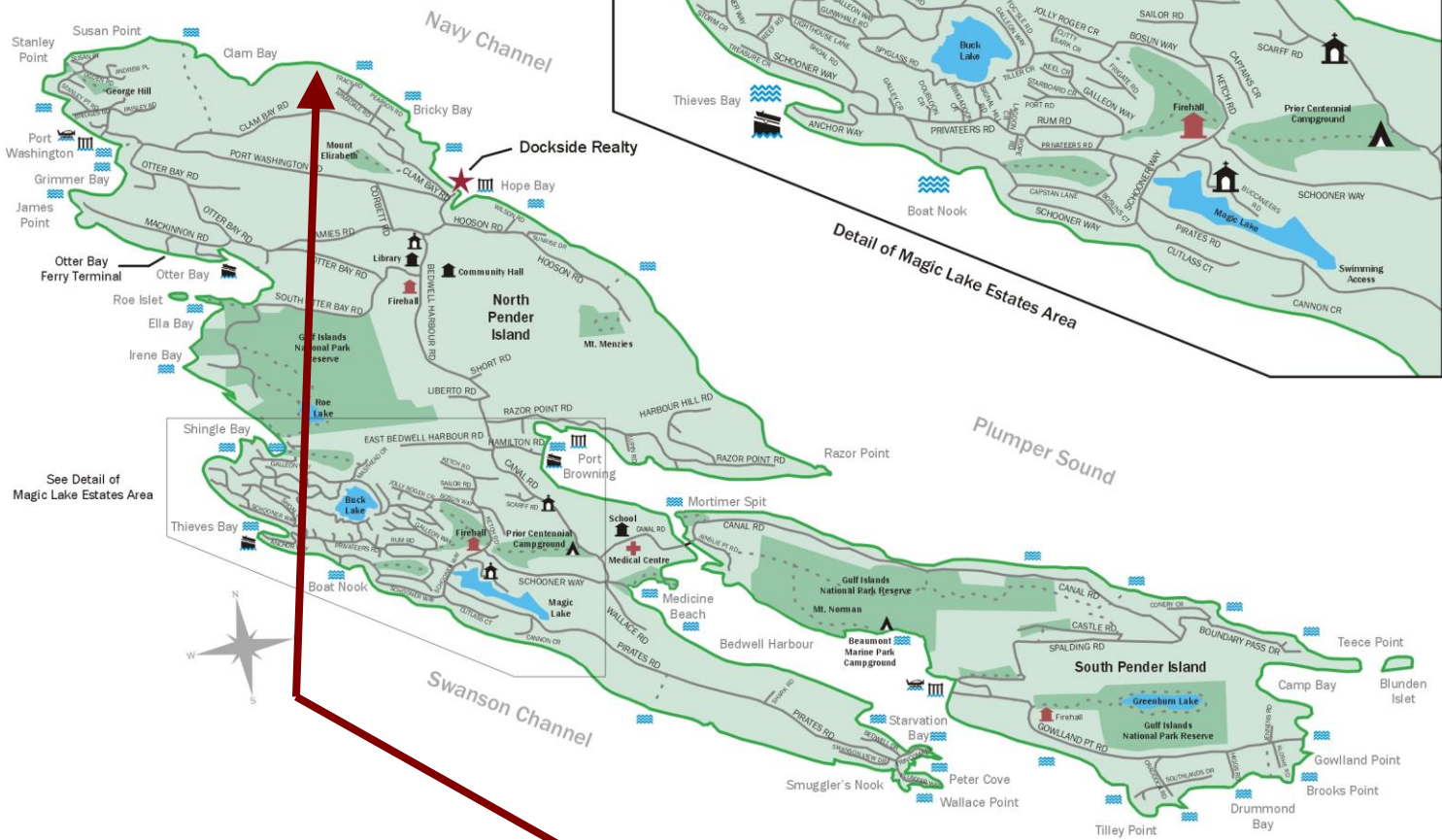
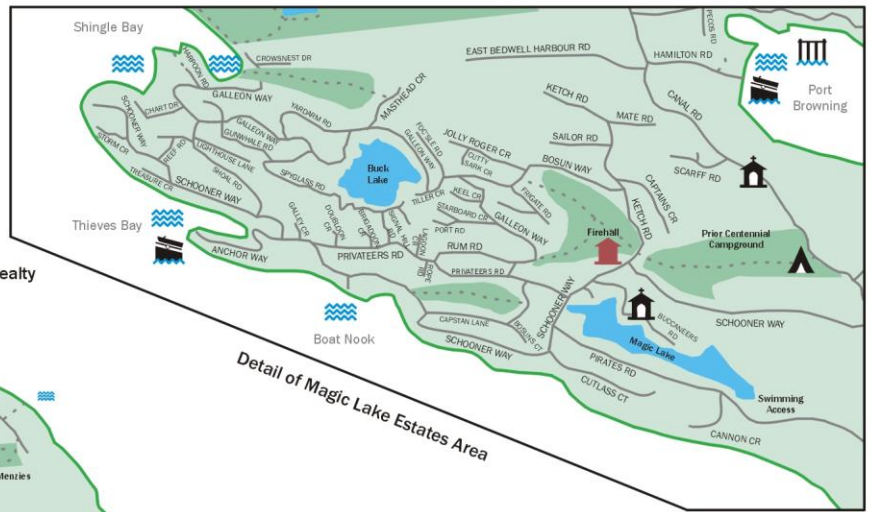
DISCLAIMER: This map is for general reference only. Data layers that appear on this map may or may not be accurate, current, or otherwise reliable. Islands Trust makes no representations of any kind, including but not limited to, the warranties of merchantability, or fitness for a particular use, nor are any such warranties to be implied with respect to the data on this map.

THIS MAP IS NOT TO BE USED FOR NAVIGATION



Pender Islands Map

Pender Islands British Columbia, Canada



**Subject Property
3210 Armadale Road**

- Dockside Realty
- Public Wharf
- Boat Launch
- Float Plane
- Firehall
- Medical Centre
- Municipal
- Place of Worship
- Campground
- Walking Trail
- Ocean Access/View

Map courtesy of Dockside Realty. Design Copyright © 2012 Minsky Designs www.minskydesigns.com. All rights reserved.

DISCLAIMER: While every effort is made to provide reliable information, Dockside Realty Ltd. makes no representations or warranties as to the accuracy of this brochure.

All measurements are approximate and the buyer is responsible for verifying all data provided.



Hope Bay: 250-629-3166
Sidney: 250-656-5062
info@DocksideRealty.ca

Driftwood: 250-629-3383
Saturna: 250-539-2121
www.DocksideRealty.ca