

Charming Updated Cottage!



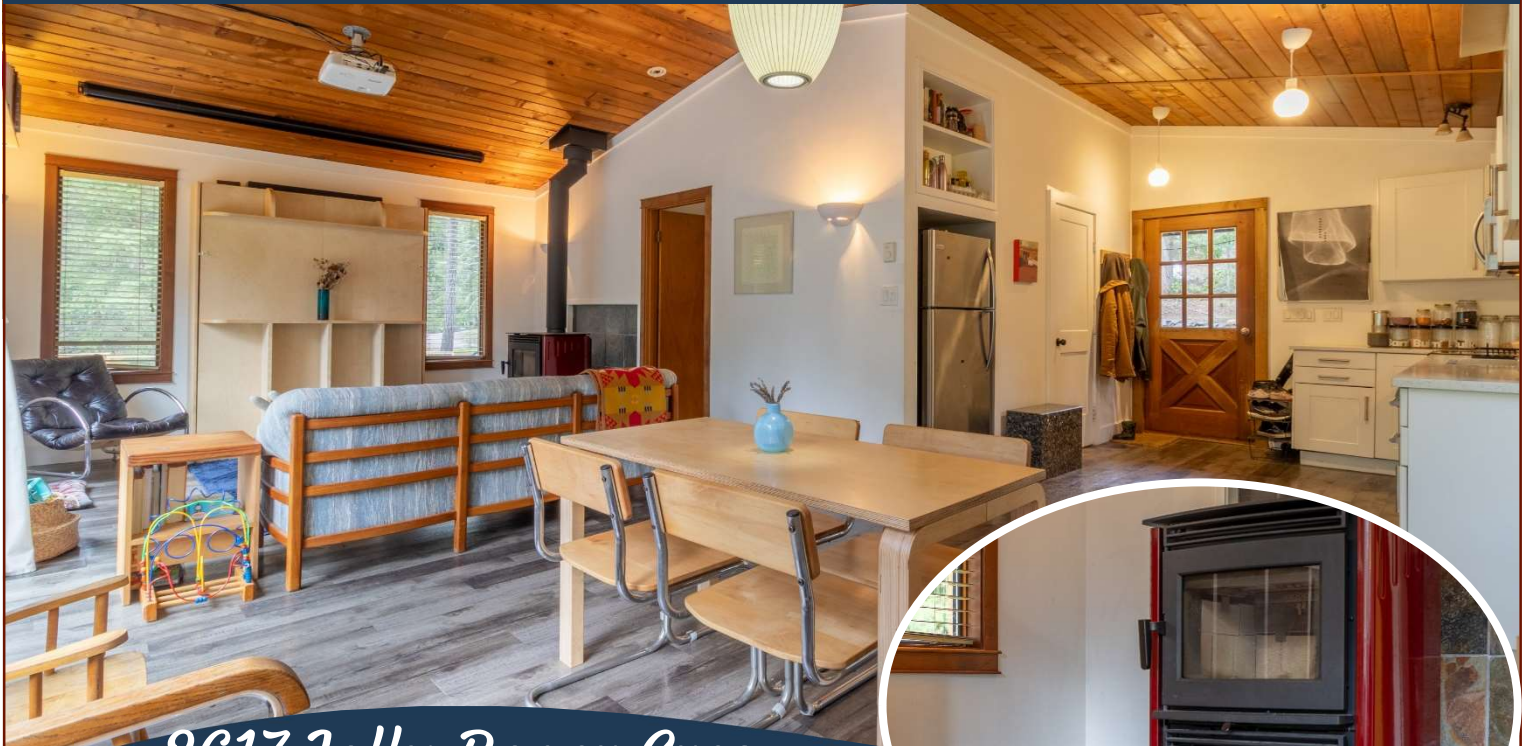
3617 Jolly Roger Cres



Serene Island Living Awaits! Nestled on a tranquil no-thru road, this charming, updated Pender Island cottage exudes warmth and character. With approximately 650 sq. ft. of bright, open living space, this 1-bedroom, 1-bathroom gem features vaulted cedar ceilings, a custom-designed kitchen, and a new freestanding wood stove—perfect for cozy evenings. Step outside onto the spacious deck overlooking the sunny 0.4-acre property. This elevated lot offers abundant green space and plenty of potential for your creative vision. The lower level includes a handy workshop/storage area, while a separate, attractive 10x10 office adds extra versatility. Ideally located near scenic walking trails and the popular disc golf park, the property is part of the sought-after Magic Lake community, which offers residents reduced moorage rates at picturesque Thieves Bay Marina. All measurements are approximate. Buyer's Agent must be present for all showings.



Property Details



3617 Jolly Roger Cres



Year Built (est):
1981

Lot Acres: 0.40

Bedrooms: 1

Bathrooms: 1

Fin SqFt: 650

Unfin SqFt: 588

Bsmt: Partial; Walk-out access

Bsmt Height: 7 ft

Water: Municipal

Waste: Septic system

Driveway: Gravel/dirt

Foundation:
Concrete Poured

Roof: Metal

Ext Fin: Wood

Heat: Baseboard, Electric, Wood

Lot Features:

- No through road
- Separate office/studio
- Custom kitchen
- Lower workshop
- Magic Lake Estates with access to Thieves Bay marina & tennis courts

Plot Plan and Aerial View

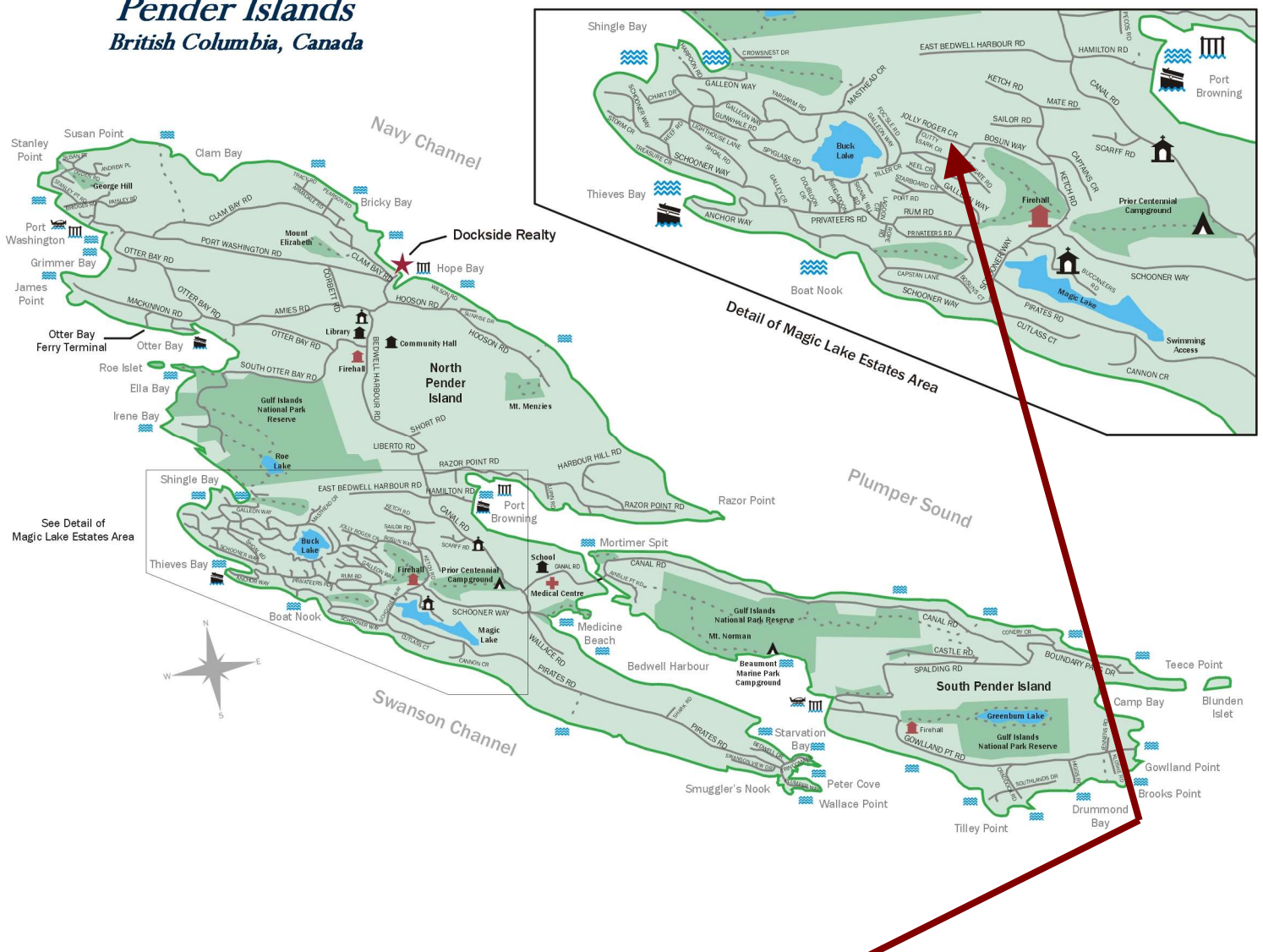


3617 Jolly Roger Cres



Pender Islands Map

Pender Islands British Columbia, Canada



**Subject Property
3617 Jolly Roger Cres**

- Dockside Realty
- Public Wharf
- Boat Launch
- Float Plane
- Firehall
- Medical Centre
- Municipal
- Place of Worship
- Campground
- Walking Trail
- Ocean Access/View

Map courtesy of Dockside Realty. Design Copyright © 2012 Minsky Designs www.minskydesigns.com. All rights reserved.

DISCLAIMER: While every effort is made to provide reliable information, Dockside Realty Ltd. makes no representations or warranties as to the accuracy of this brochure.

All measurements are approximate and the buyer is responsible for verifying all data provided.



Pender Island • Saturna Island • Vancouver Island

www.DocksideRealty.ca

info@DocksideRealty.ca • 250-629-3383