

Park-Like Paradise!



3720 Frigate Rd



Park-Like Paradise! This 1.52-acre property offers many attractive features. Situated at the end of a very quiet cul-de-sac, this park-like property enjoys sunny southern exposure and a wonderful sense of privacy in a natural setting. Desirable property borders the Disc Golf Park. Walking trails, Beach access at Boat Nook & public swimming on Magic Lake are all nearby. Property owners in this neighbourhood may qualify for affordable moorage at Thieves Bay Community Marina. Services at road include: Municipal Water, Sewer, Hydro, Cable and Internet. Value added bonus; sewer improvement levee has been prepaid. Several building sites to choose from. Enter from Frigate Road or Galleon Way; driveway required. Acreages are very rare in this neighbourhood; get a head start on your Gulf Island dream today!



Property Details



3720 Frigate Rd



Lot Acres: 1.52

Water: Municipal

Waste: Sewer available; to lot

Services: At lot line

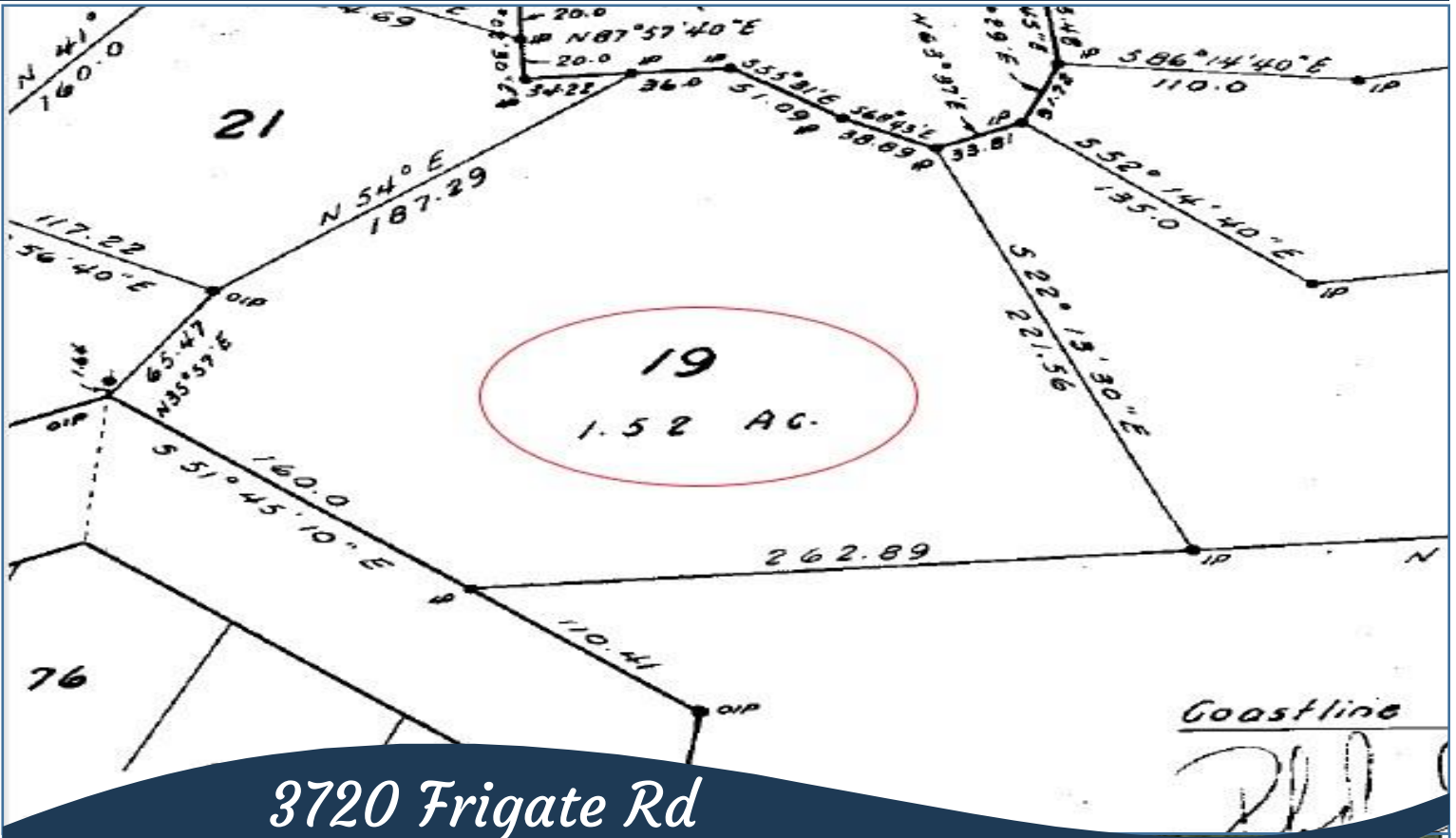
Driveway: None

Bldg Scheme: No

Lot Features:

- Acreage
- Southern exposure
- Private Property
- Quiet cul-de-sac
- Treed
- Magic Lake Estates with access to Thieves Bay Marina and tennis courts

Plot Plan and Aerial View

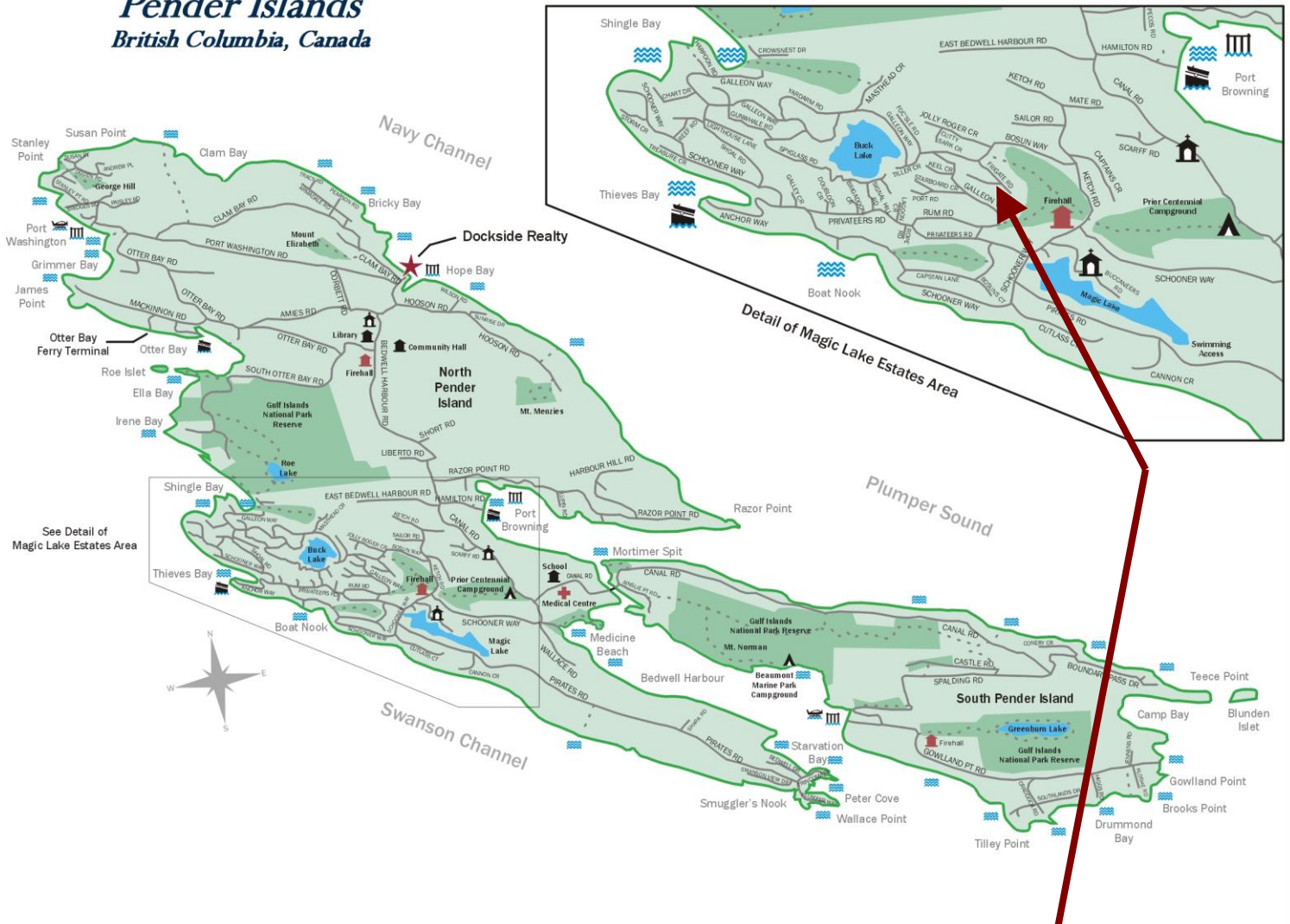


3720 Frigate Rd



Pender Islands Map

Pender Islands British Columbia, Canada



**Subject Property
3720 Frigate Road**

- ★ Docksde Realty
- ⚓ Public Wharf
- 🚤 Boat Launch
- ✈️ Float Plane
- 🔥 Firehall
- 🏥 Medical Centre
- 🏛️ Municipal
- 🏠 Place of Worship
- ⛺ Campground
- Walking Trail
- 🌊 Ocean Access/View

Map courtesy of Docksde Realty. Design Copyright © 2012 Minsky Designs www.minskydesigns.com. All rights reserved.

DISCLAIMER: While every effort is made to provide reliable information, Docksde Realty Ltd. makes no representations or warranties as to the accuracy of this brochure. All measurements are approximate and the buyer is responsible for verifying all data provided.



Pender Island • Saturna Island • Vancouver Island
www.DocksdeRealty.ca
info@DocksdeRealty.ca • 250-629-3383