

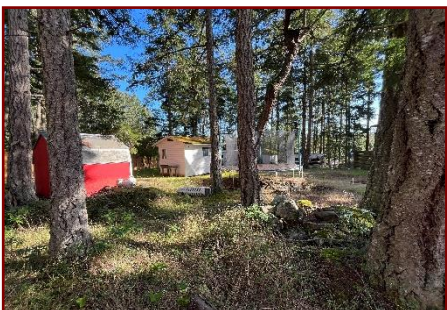
Fantastic Entry Opportunity!



37250 Schooner Way



Fantastic property to break into the market. This sunny .34 acre property is all usable land and has electrical, municipal water and municipal sewer all hooked up to the bunkie and RV. Enjoy Pender Island immediately as you build your home over time. Great location with Magic Lake across the street, nearby disc golf course, tennis courts, ballpark, and a 6 minute drive to The Driftwood Centre, the Island's hub of amenities. If you have ever dreamed of having a boat to zip around the Islands, Magic Lake homeowners are eligible for affordable moorage rates at Thieves Bay Marina, only a 3 minute drive up the road. Come have a look.



Property Details



37250 Schooner Way



Lot Acres: 0.35

Water: Municipal

Waste: Sewer

Services: Electrical, water, sewer to RV and bunkie

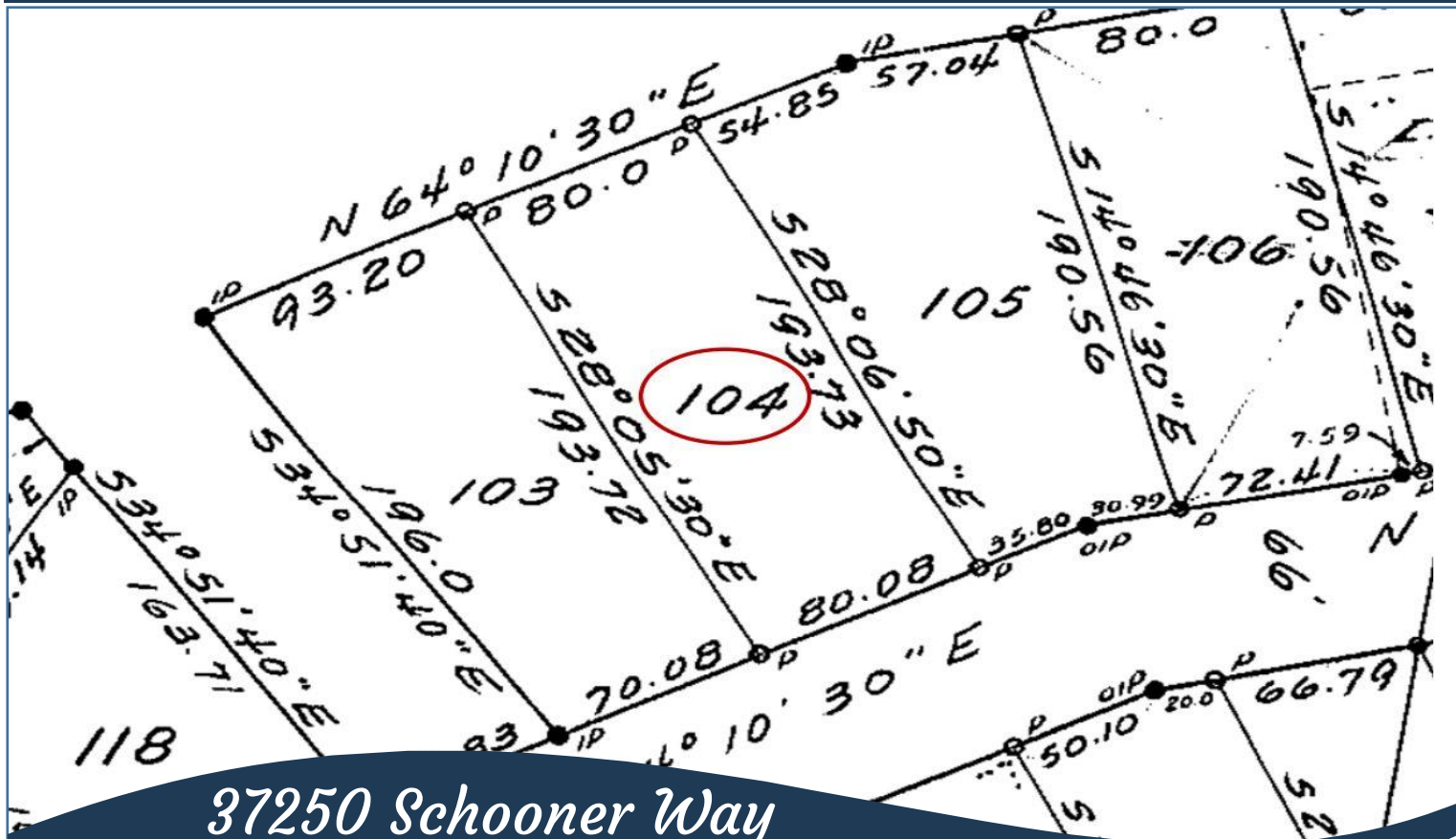
Driveway: Gravel/dirt

Bldg Scheme: No

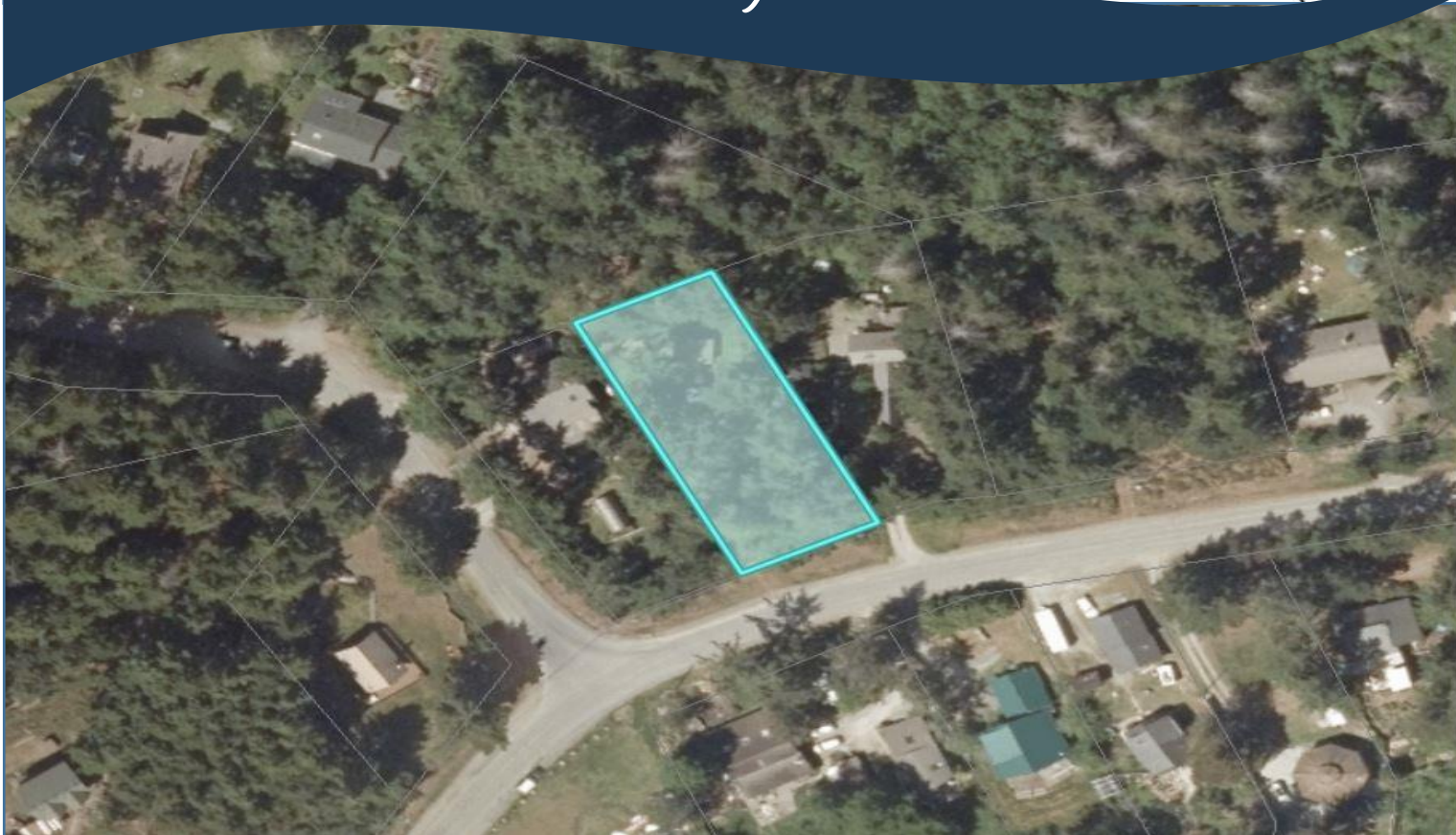
Lot Features:

- Across the street from Magic Lake
- Sunny
- RV and bunkie in place
- Cleared
- Storage sheds
- Level Building Site

Plot Plan and Aerial View

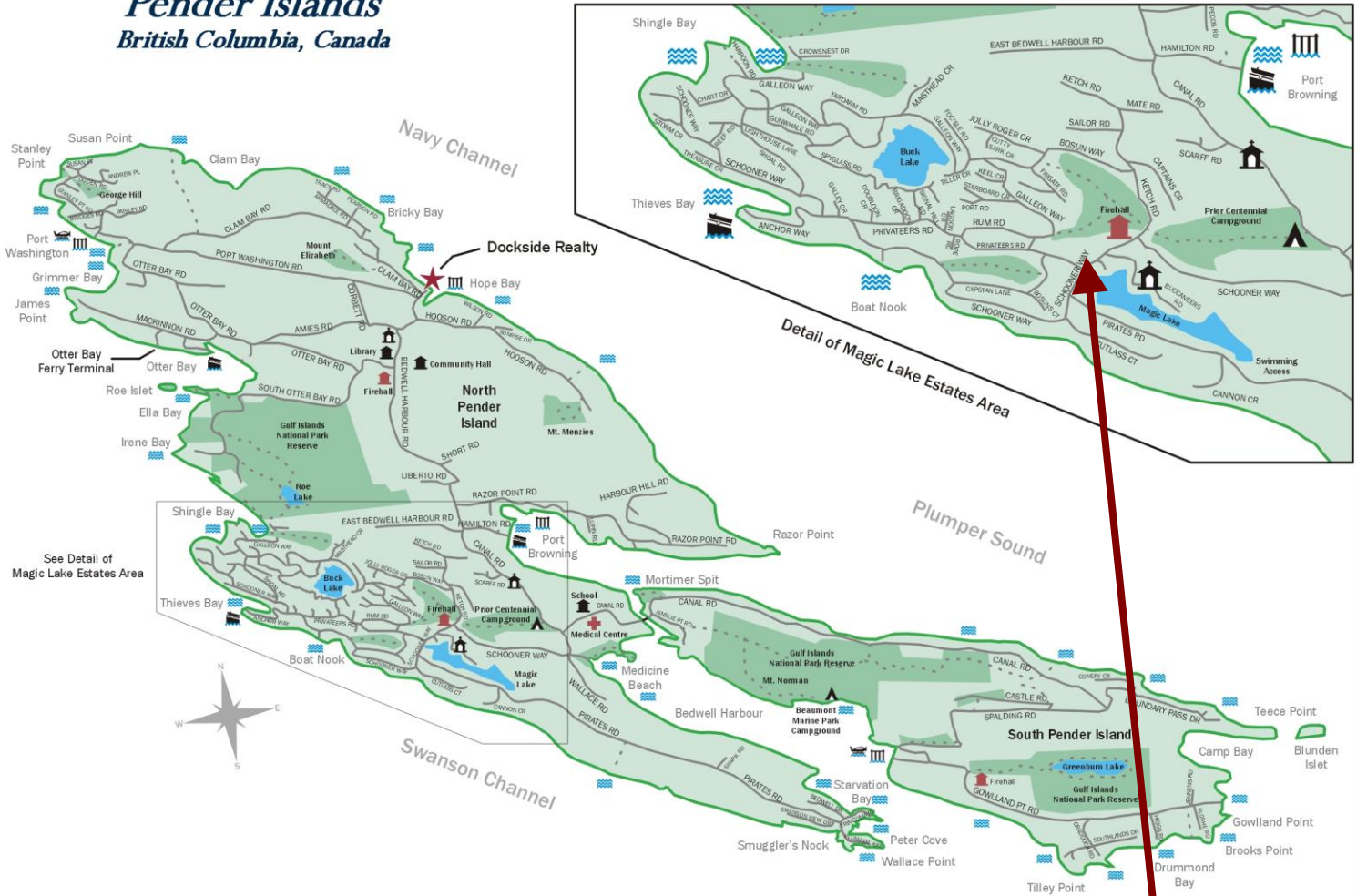


37250 Schooner Way



Pender Islands Map

Pender Islands British Columbia, Canada



**Subject Property
37250 Schooner Way**

- ★ Dockside Realty
- ▤ Public Wharf
- ⚓ Boat Launch
- ✈ Float Plane
- 🔥 Firehall
- 🏥 Medical Centre
- 🏛 Municipal
- ⛪ Place of Worship
- ⛺ Campground
- Walking Trail
- 🌊 Ocean Access/View

Map courtesy of Dockside Realty. Design Copyright © 2012 Minsky Designs www.minskydesigns.com. All rights reserved.

DISCLAIMER: While every effort is made to provide reliable information, Dockside Realty Ltd. makes no representations or warranties as to the accuracy of this brochure. All measurements are approximate and the buyer is responsible for verifying all data provided.



Pender Island • Saturna Island • Vancouver Island
www.DocksideRealty.ca
info@DocksideRealty.ca • 250-629-3383