

Perfect Building Lot!



Driveway access ➔

3786 Privateers Rd

Approximate lot corners ↙ ↘ ↙ ↘



Beautiful .68-acre property backing onto the disc park and a stones' throw to Magic Lake. Gorgeous open forest with dappled sun all day long. Won't be hard to put in a driveway here, and building should be a breeze as the lot is approachable and level throughout. Not only can you walk to the disc park and start playing on hole 21, you can also stroll to the tennis courts and swimming at Magic Lake, or venture further to Thieves Bay where Magic Lake owners benefit from having reduced moorage rates. Enjoy the perks of municipal water and sewer hook up, leaving lots of room to landscape and create your perfect space.



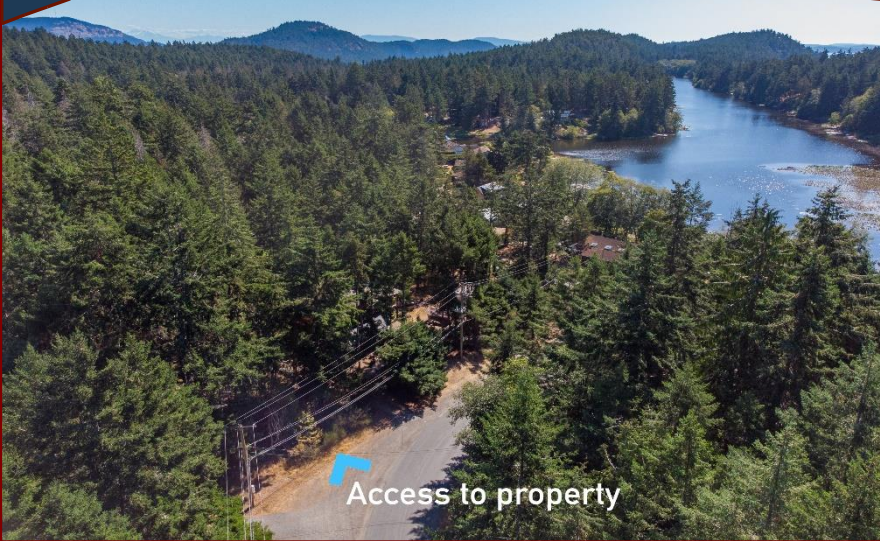
Hope Bay: 250-629-3166
Sidney: 250-656-5062
info@DocksideRealty.ca

Driftwood: 250-629-3383
Saturna: 250-539-2121
www.DocksideRealty.ca

Property Details



3786 Privateers Rd



Lot Acres: 0.68

Water: Municipal

Waste: Sewer

Services: At lot line

Driveway: None

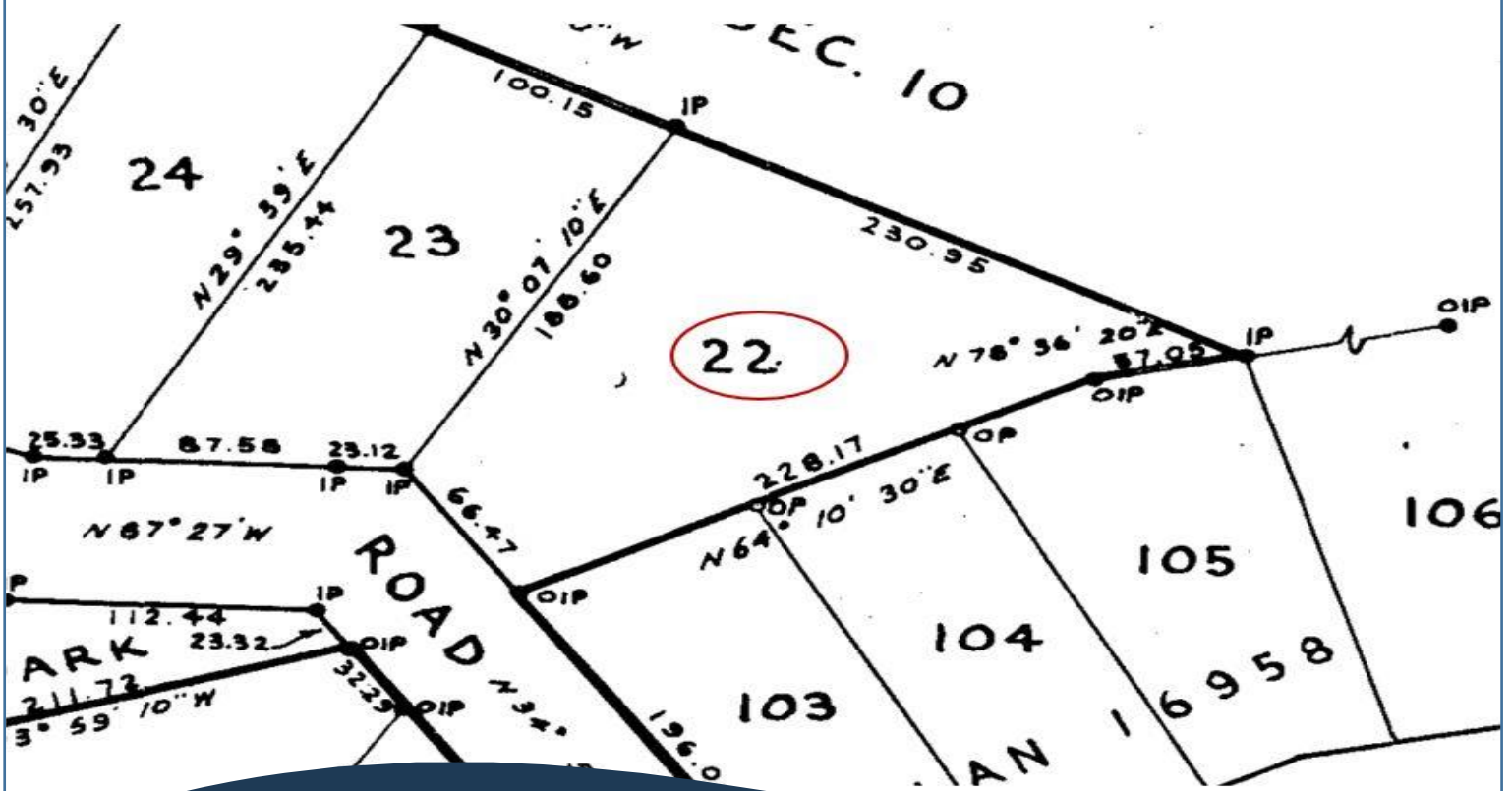
Bldg Scheme: No

Lot Features:

- Level
- Sunny
- Treed
- Close to lake
- Magic Lake Estates with access to Thieves Bay Marina and tennis courts



Plot Plan and Aerial View



3786 Privateers Rd

Aerial - Lot 22 Privateers

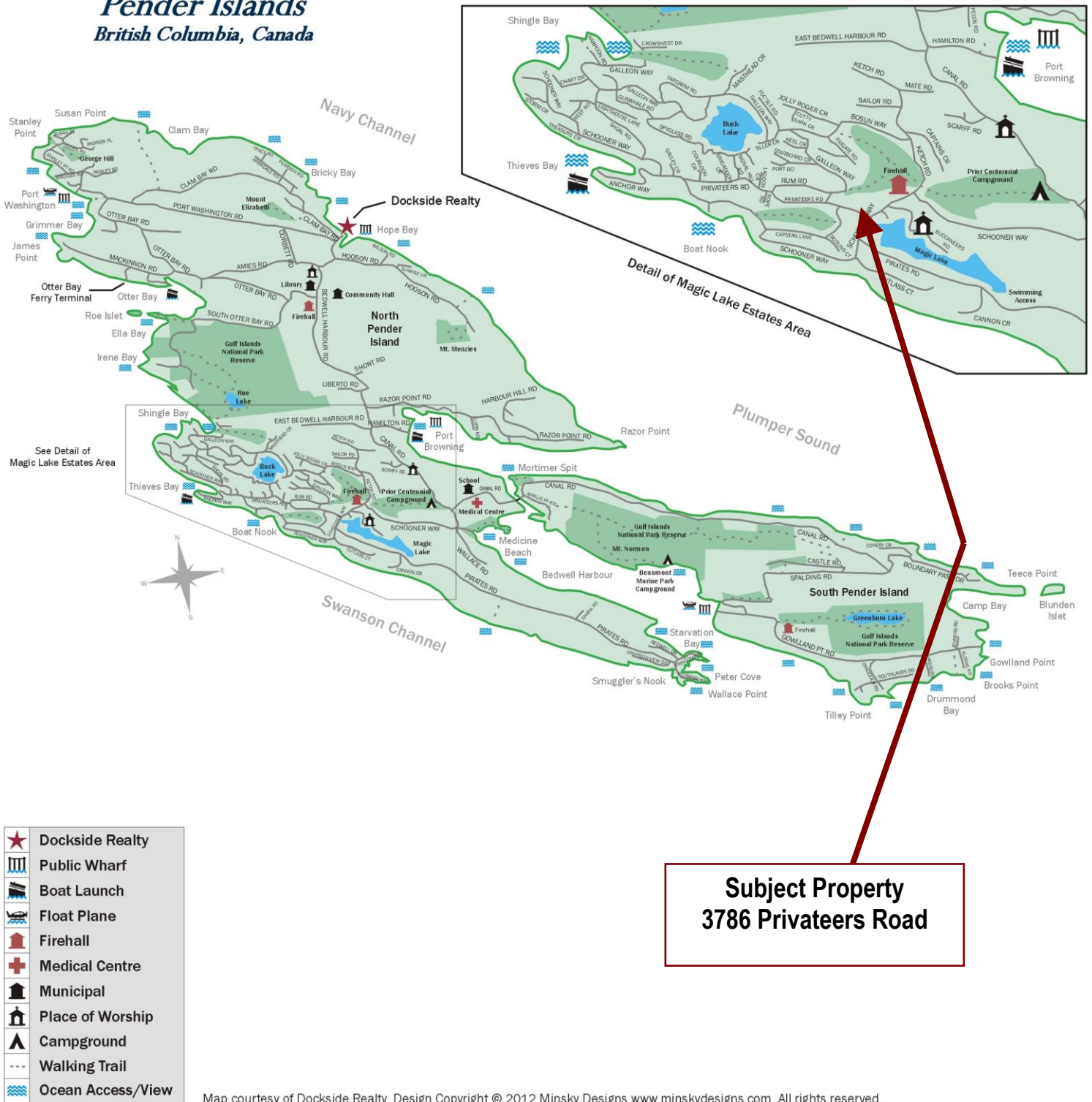


Hope Bay: 250-629-3166
Sidney: 250-656-5062
info@DocksiderRealty.ca

Driftwood: 250-629-3383
Saturna: 250-539-2121
www.DocksiderRealty.ca

Pender Islands Map

Pender Islands British Columbia, Canada



**Subject Property
3786 Privateers Road**

Map courtesy of Docksider Realty. Design Copyright © 2012 Minsky Designs www.minskydesigns.com. All rights reserved.

DISCLAIMER: While every effort is made to provide reliable information, Docksider Realty Ltd. makes no representations or warranties as to the accuracy of this brochure. All measurements are approximate and the buyer is responsible for verifying all data provided.



Hope Bay: 250-629-3166
Sidney: 250-656-5062
info@DocksiderRealty.ca

Driftwood: 250-629-3383
Saturna: 250-539-2121
www.DocksiderRealty.ca