

# HOME SWEET HOME



4310 BEDWELL HARBOUR RD



Hope Bay  
Stores & Dock

4310 Bedwell Harbour Rd





## 4310 BEDWELL HARBOUR RD

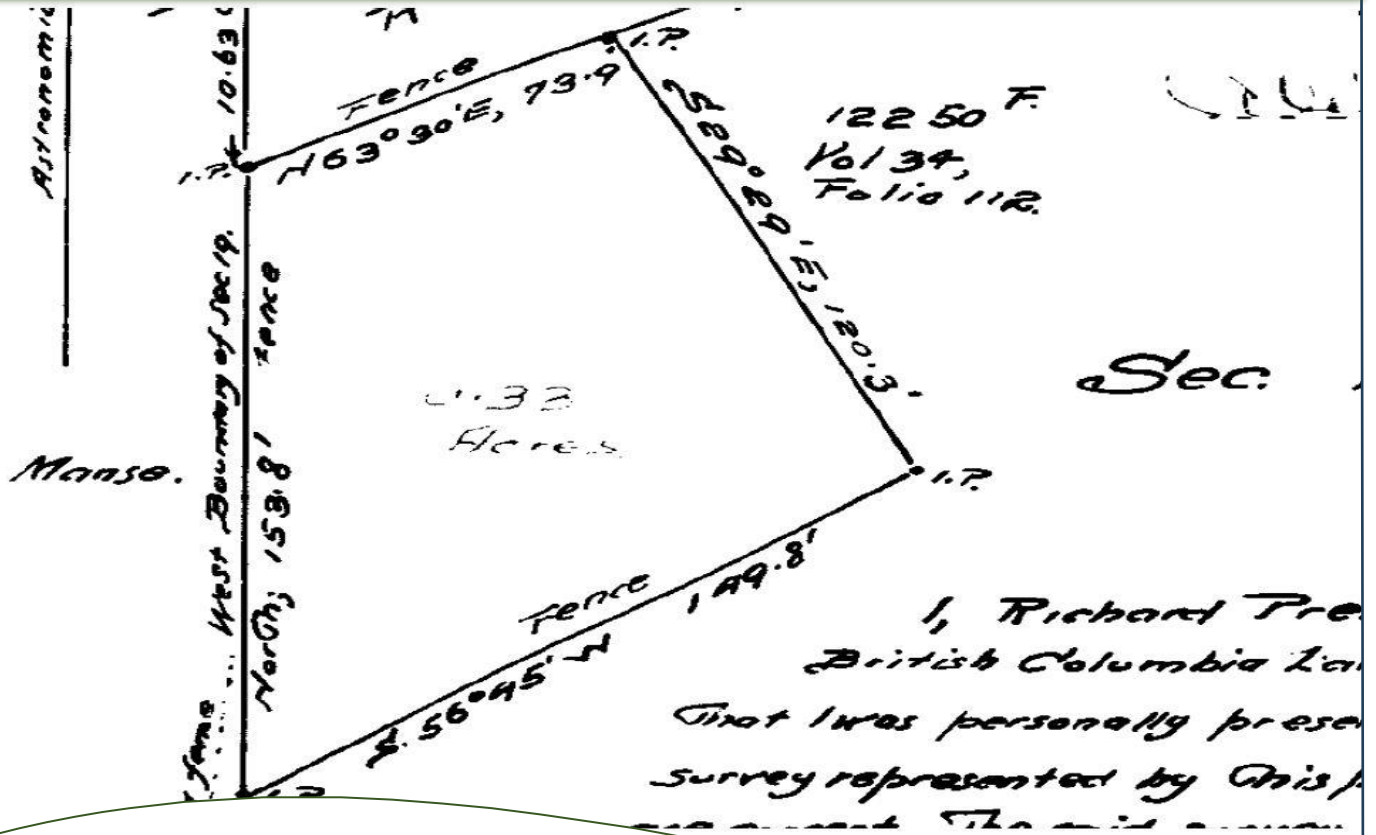
4 BEDS ~ 2 BATHS ~ 1,800 SQFT

This beautifully updated 4 bedroom, 2 bathroom Island original is situated in a premium location just a short walk to Government dock & shops at Historic Hope Bay & minutes from the Library, Thrift store, Community Center and Public Golf Course! The main floor enjoys spacious living room with cozy, wood burning fireplace, functional galley kitchen equipped with newer stainless-steel appliances, Primary bedroom complete with full Ensuite, 2nd bedroom & full bathroom all featuring a lovely sense of air & light. Upstairs, an additional 2 bedrooms are perfect for the kids or weekend guests. Lovely yard is a gardeners dream boasting several productive fruit trees, raised beds, a variety of berries & mature plantings. Nearly 600 square feet of sunny deck is the perfect spot to relax or entertain while enjoying this serene setting. Your special Island dream awaits you!





# PLOT PLAN & AERIAL VIEW

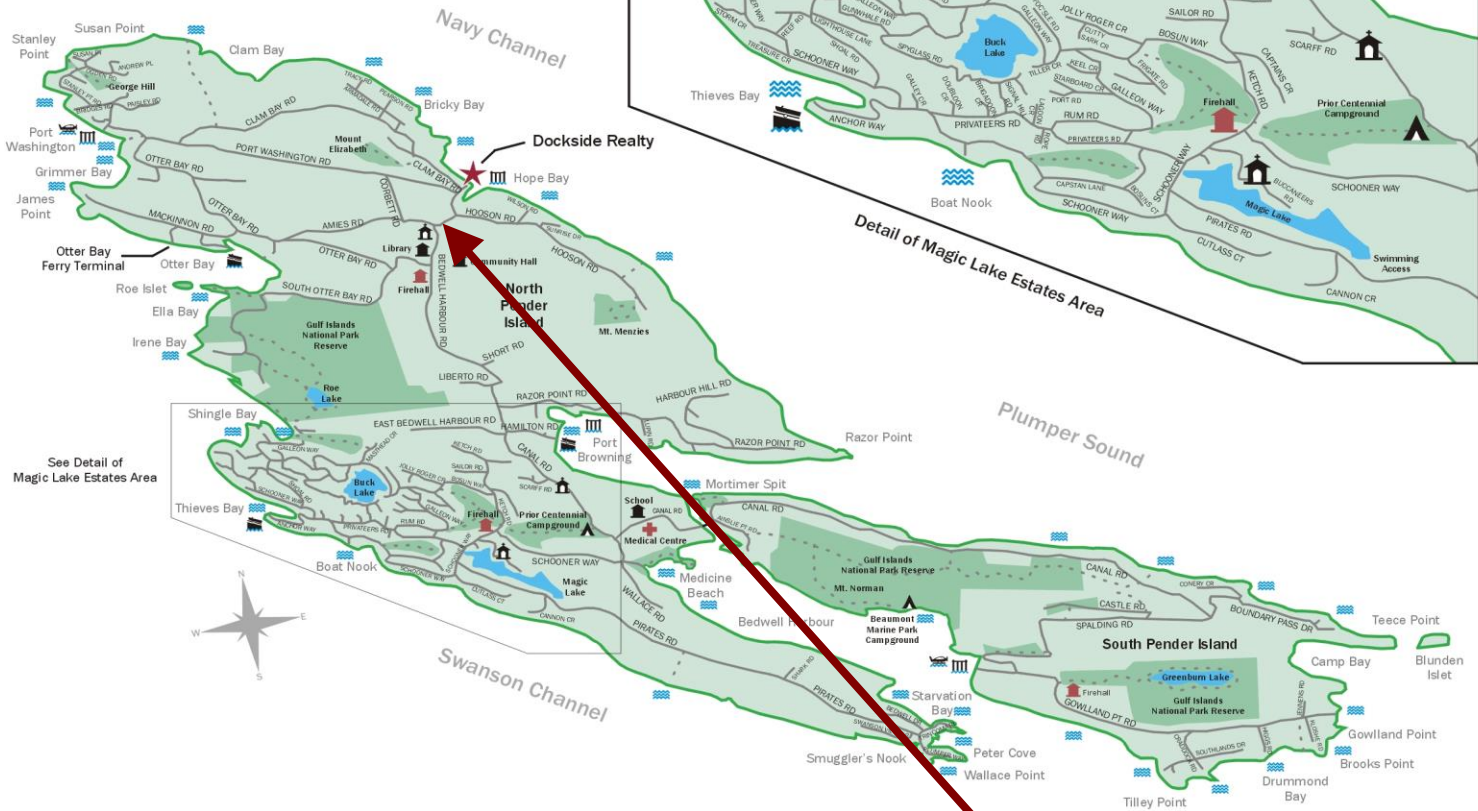
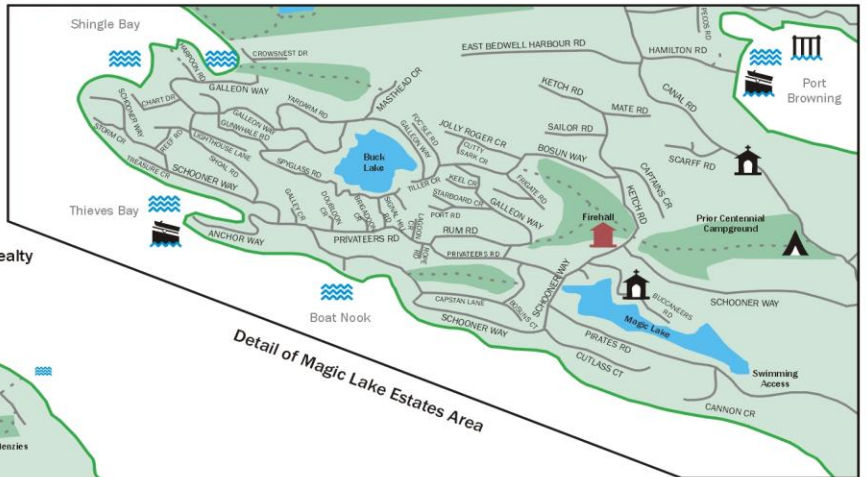


4310 BEDWELL HARBOUR RD



# PENDER ISLAND MAP

## Pender Islands British Columbia, Canada

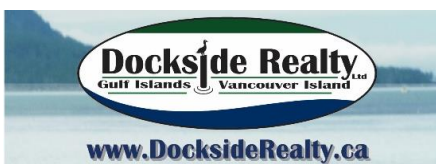


- Dockside Realty
- Public Wharf
- Boat Launch
- Float Plane
- Firehall
- Medical Centre
- Municipal
- Place of Worship
- Campground
- Walking Trail
- Ocean Access/View

Subject Property  
**4310 BEDWELL HARBOUR RD**

Map courtesy of Dockside Realty. Design Copyright © 2012 Minsky Designs www.minskydesigns.com. All rights reserved.

**DISCLAIMER:** While every effort is made to provide reliable information, Dockside Realty Ltd. makes no representations or warranties as to the accuracy of this brochure. All measurements are approximate; the buyer is responsible for verifying all data provided.



**Pender Island • Saturna Island • Vancouver Island**  
info@DocksideRealty.ca • 250-629-3166