

Ready, Set, Go!



4606 Mate Rd



A great Magic Lake ocean view building lot, on a quiet no through road. This land is ready for development, and ready to enjoy right now. A solid driveway through a gate, into a beautifully fenced, partially cleared half acre. It feels large, with it's sunny upper portion, and it's private forested lower portion. The septic system is in. There's a cozy bunkhouse down in the private lower forested area. There's also a brand new outbuilding with power, heat, water, and a brand new washer and dryer in the sunny upper area. It's totally movable, but it's sitting right beside the 200 amp underground service. Community water is already hooked up. This lot is all ready for your new ocean view home. Add up all of the improvements to this lot... and it's all already done.

Property Details



4606 Mate Rd



Lot Acres: 0.47

Water: Municipal

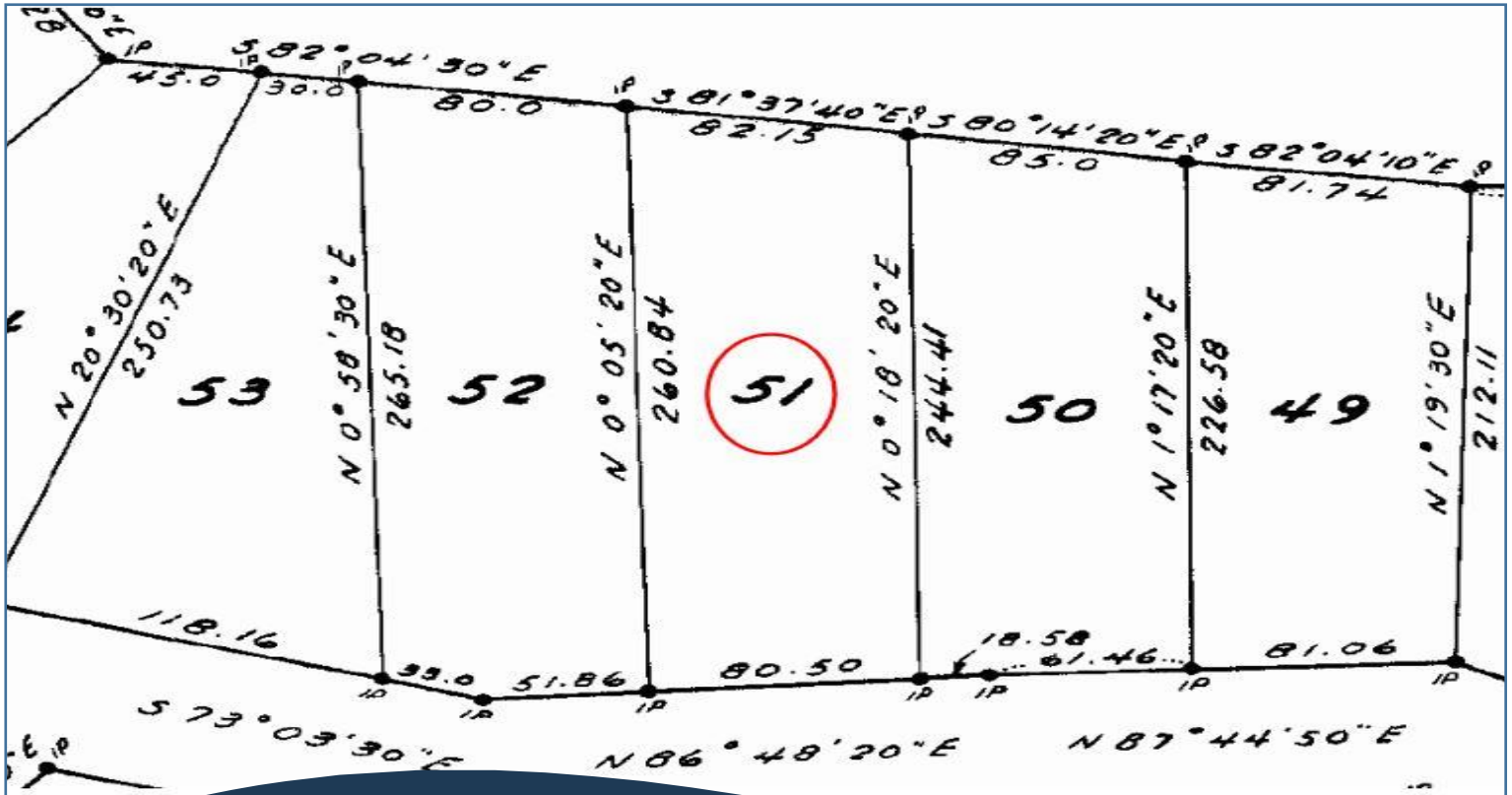
Waste: Septic System

Services: At lot line

Lot Features:

- Ocean Views
- Mountain Views
- Private Property
- Partially Cleared
- Rectangular Lot

Plot Plan and Aerial View



4606 Mate Rd



57.3 0 28.7 57.3 Meters

WGS_1984_Web_Mercator_Auxiliary_Sphere
© Islands Trust



1:1,128

July 15, 2019

DISCLAIMER: This map is for general reference only. Data layers that appear on this map may or may not be accurate, current, or otherwise reliable. Islands Trust makes no representations of any kind, including but not limited to, the warranties of merchantability, or fitness for a particular use, nor are any such warranties to be implied with respect to the data on this map.

THIS MAP IS NOT TO BE USED FOR NAVIGATION

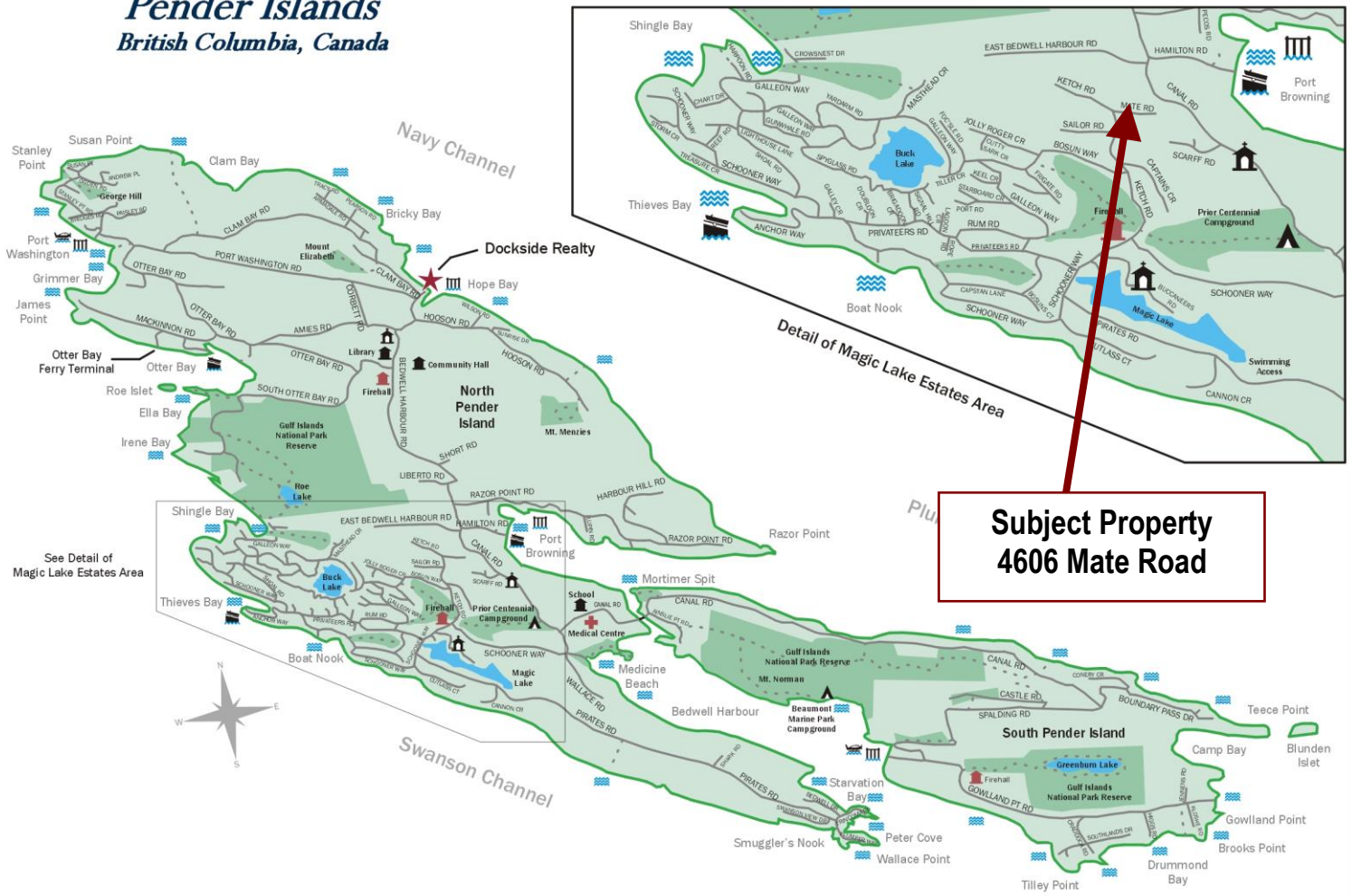


Hope Bay: 250-629-3166
Sidney: 250-656-5062
info@DocksideRealty.ca

Driftwood: 250-629-3383
Saturna: 250-539-2121
www.DocksideRealty.ca

Pender Islands Map

Pender Islands British Columbia, Canada



**Subject Property
4606 Mate Road**

- Dockside Realty
- Public Wharf
- Boat Launch
- Float Plane
- Firehall
- Medical Centre
- Municipal
- Place of Worship
- Campground
- Walking Trail
- Ocean Access/View

Map courtesy of Dockside Realty. Design Copyright © 2012 Minsky Designs www.minskydesigns.com. All rights reserved.

DISCLAIMER: While every effort is made to provide reliable information, Dockside Realty Ltd. makes no representations or warranties as to the accuracy of this brochure.
All measurements are approximate and the buyer is responsible for verifying all data provided.



Hope Bay: 250-629-3166
Sidney: 250-656-5062
info@DocksideRealty.ca

Driftwood: 250-629-3383
Saturna: 250-539-2121
www.DocksideRealty.ca