

Sunny and Open Building Lot!



4610 Mate Rd



Located on a quiet Cul de sac, this .41-acre lot is sunny and open. It has a couple of large flat areas and an easy building site with the potential of some views of Browning Harbour from the upper level of your future dream home. Hydro, Cable, Internet and water are available at the street. A septic system is required. The driveway is in place, and two outbuildings provide storage and while developing this attractive piece of Pender paradise. If you fenced in a portion of the property, you could have a large garden and orchard.



Property Details



4610 Mate Rd



Lot Acres: 0.41

Water: Municipal

Waste: Septic required

Services: At lot line

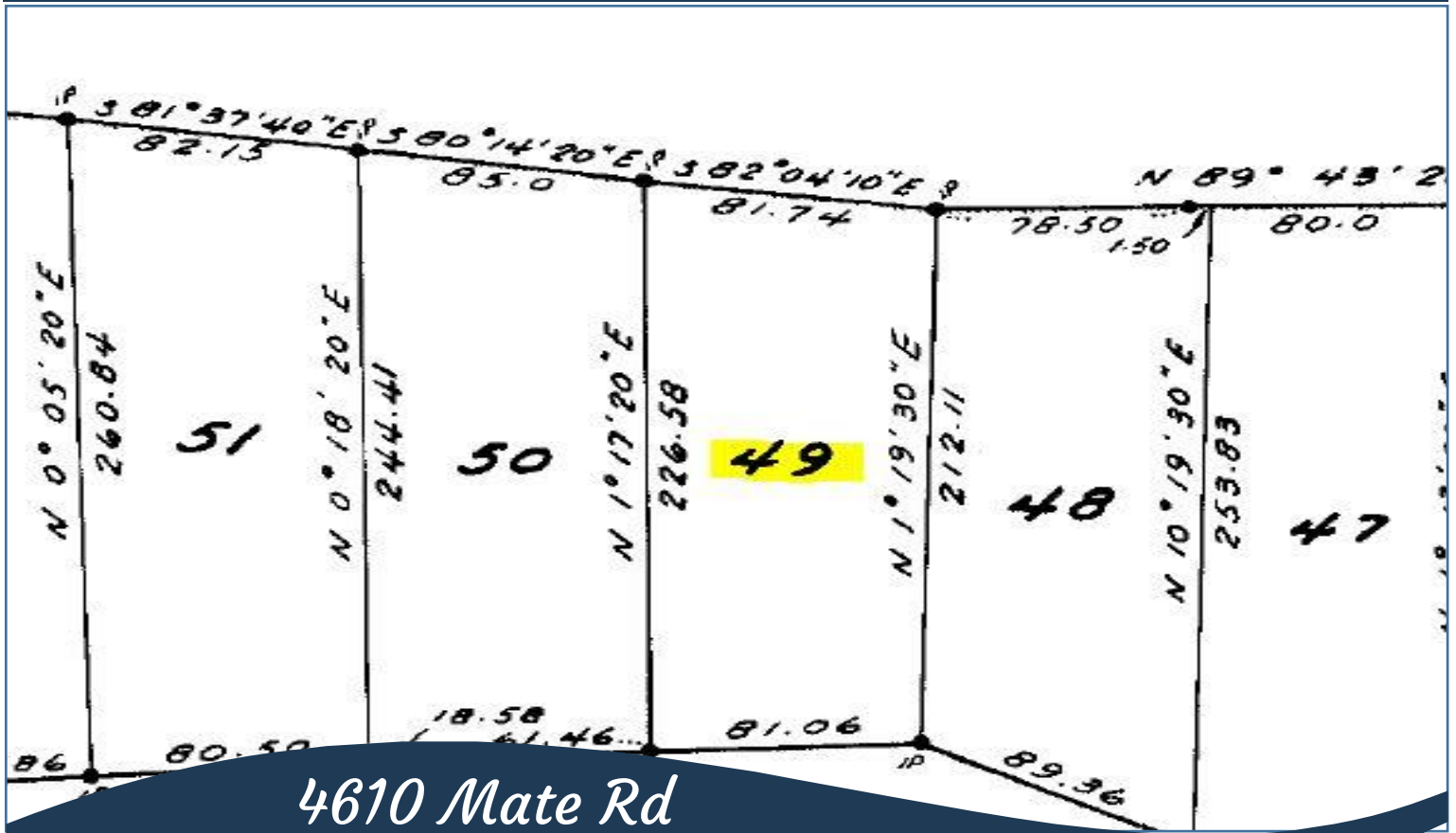
Driveway: Gravel

Bldg Scheme: No

Lot Features:

- Rectangular Lot
- Mountain and Ocean view
- Cul - de sac
- Sloping
- Wooded Lot
- 2 outbuildings
- Level Building Site

Plot Plan and Aerial View



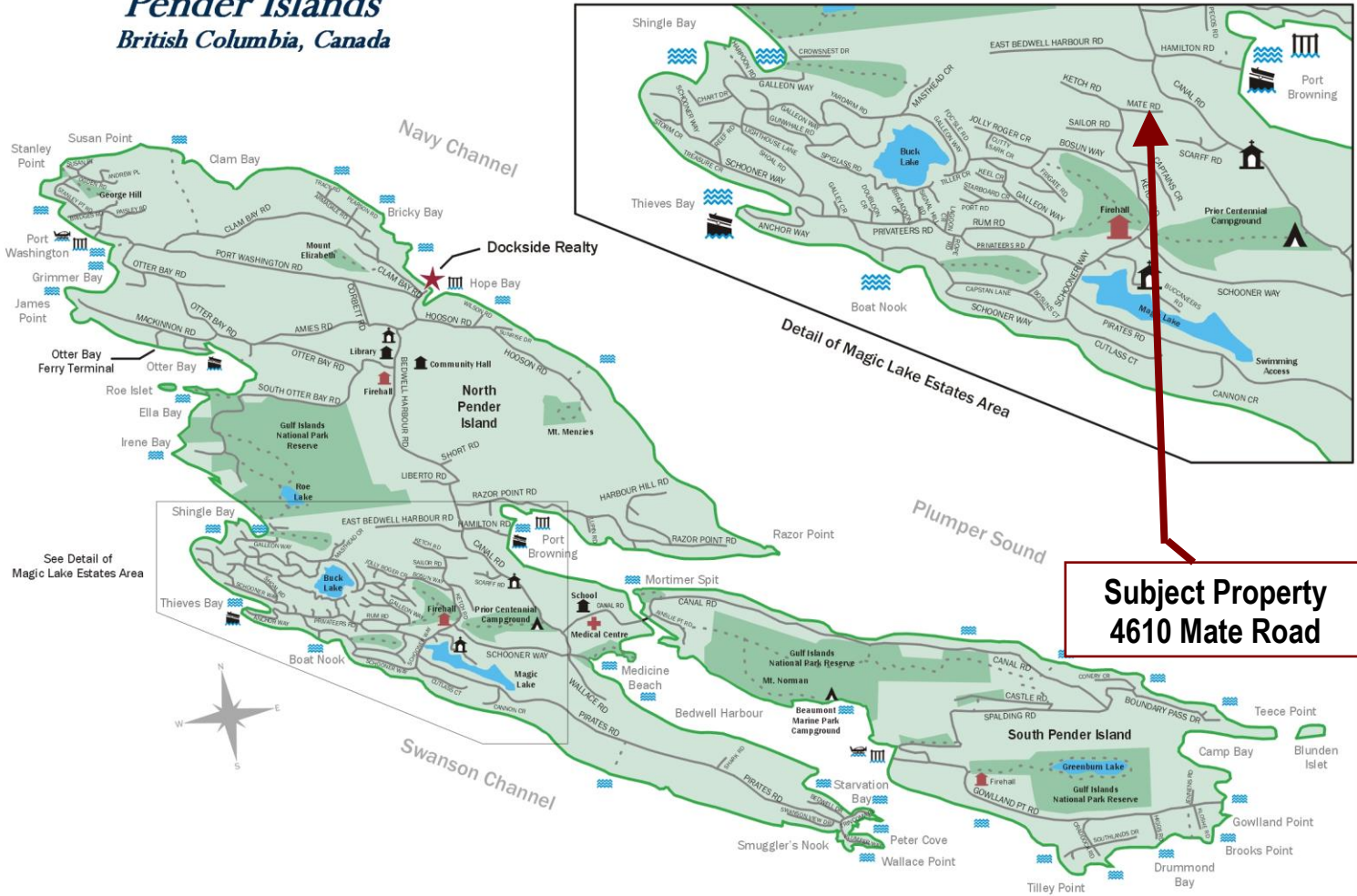
Pender Island • Saturna Island • Vancouver Island

www.DocksdeRealty.ca

info@DocksdeRealty.ca • 250-629-3383

Pender Islands Map

Pender Islands British Columbia, Canada



**Subject Property
4610 Mate Road**

- ★ Dockside Realty
- Public Wharf
- Boat Launch
- Float Plane
- Firehall
- Medical Centre
- Municipal
- Place of Worship
- Campground
- Walking Trail
- Ocean Access/View

Map courtesy of Dockside Realty. Design Copyright © 2012 Minsky Designs www.minskydesigns.com. All rights reserved.

DISCLAIMER: While every effort is made to provide reliable information, Dockside Realty Ltd. makes no representations or warranties as to the accuracy of this brochure. All measurements are approximate and the buyer is responsible for verifying all data provided.



Pender Island • Saturna Island • Vancouver Island
www.DocksideRealty.ca
info@DocksideRealty.ca • 250-629-3383