

TRINCOMALI TREASURE



7941 PLUMPER WAY





7941 PLUMPER WAY

3+ BEDS ~ 3 BATHS ~ 2,000 SQFT

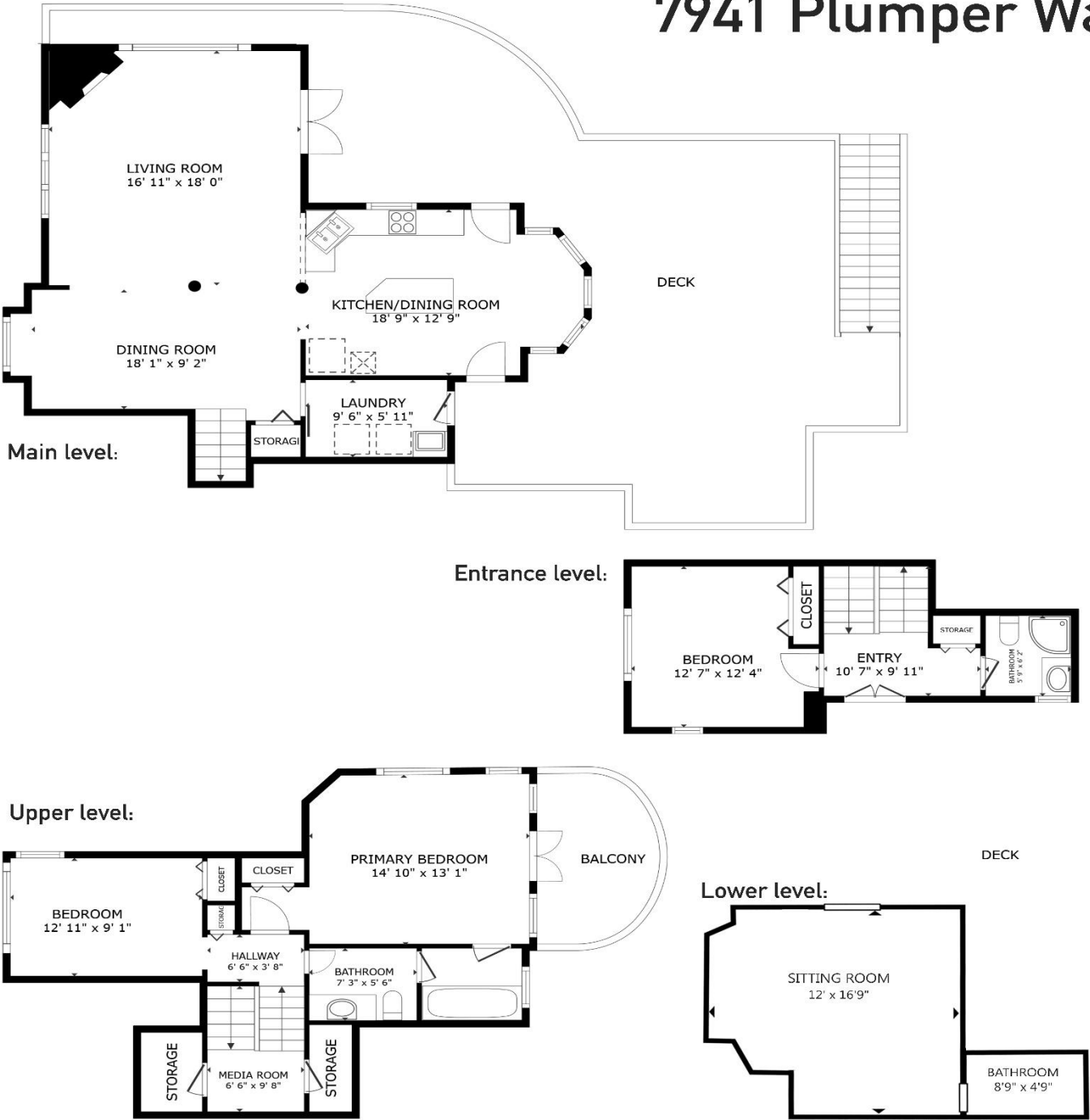
Set prominently at the edge of the Salish Sea, this beautiful home enjoys majestic vistas that are truly breathtaking! Custom designed 3+ bedroom, 3 bath home takes full advantage of this premium, easy-care property: perfect for family, friends, relaxation & entertaining! Enjoy mornings listening to soothing waves from the Primary bedroom balcony or head out & take it all in from multiple levels of sun-drenched decks. Lower level offers a unique accommodation option & cozy retreat. Private steps lead to the shoreline; your heart will soar as the resident Orcas breach right in front you! Please see website for video. Stroll across the quiet street to protected Peters Cove where you can swim, launch your kayak & keep your boat tied to the included Mooring Buoy! The Trincomali neighborhood is very desirable & just a quick zip across Bedwell Harbour to Poets Cove Resort. All principal furnishings included, simply turn your key to revel in the splendor of this amazing setting!





Floor Plan

7941 Plumper Way



Approximate internal sq ft:

Main level: 800 sq ft

Deck: 900 sq ft

Entrance level: 300 sq ft

Upper level: 600 sq ft

Balcony: 100 sq ft

Lower level: 325 sq ft

Deck: 500 sq ft

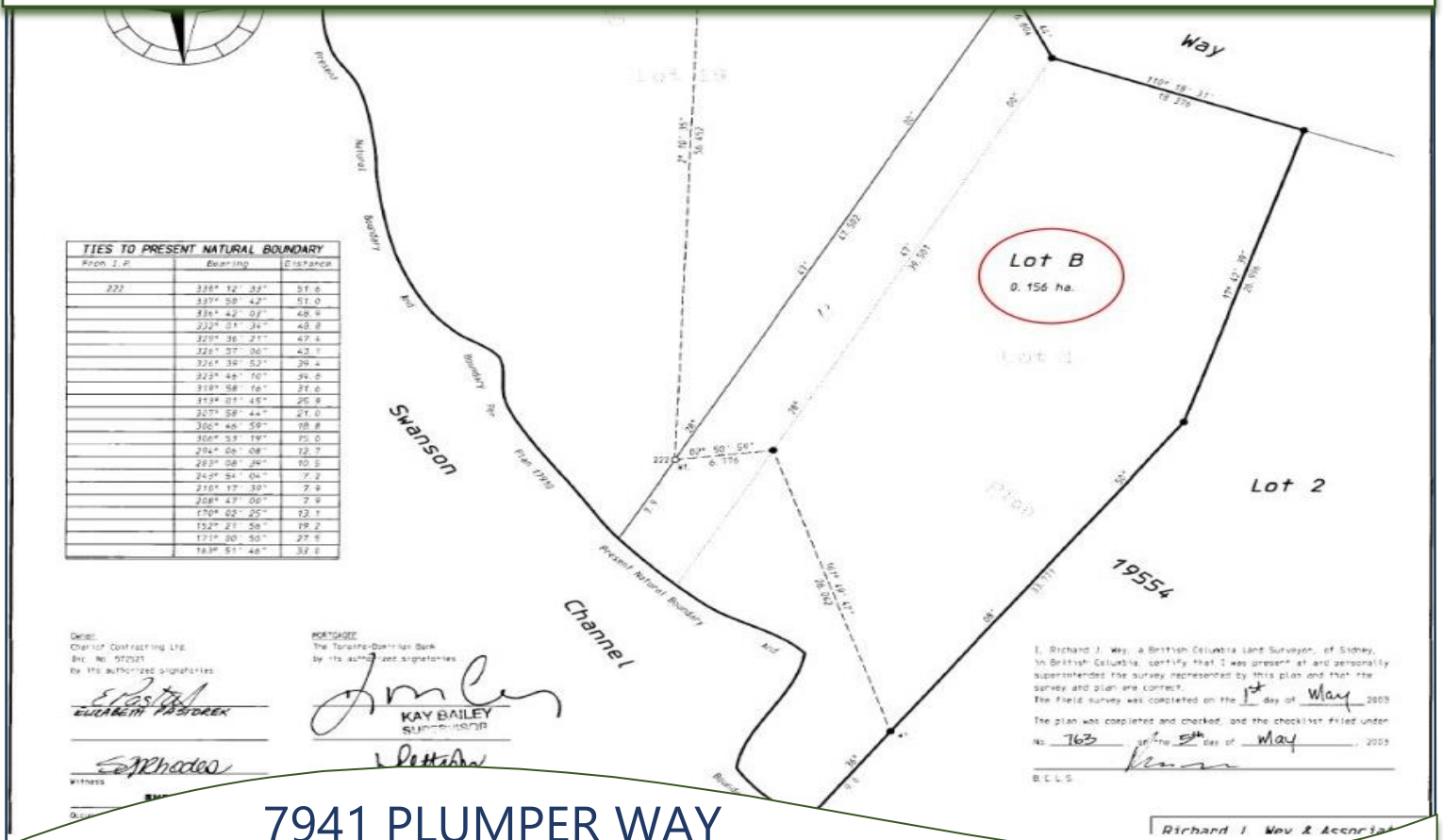
Prepared for the exclusive use of Colin Denton and Dockside Realty Inc.
All measurements are approximate, buyer to verify if important.







PLOT PLAN & AERIAL VIEW

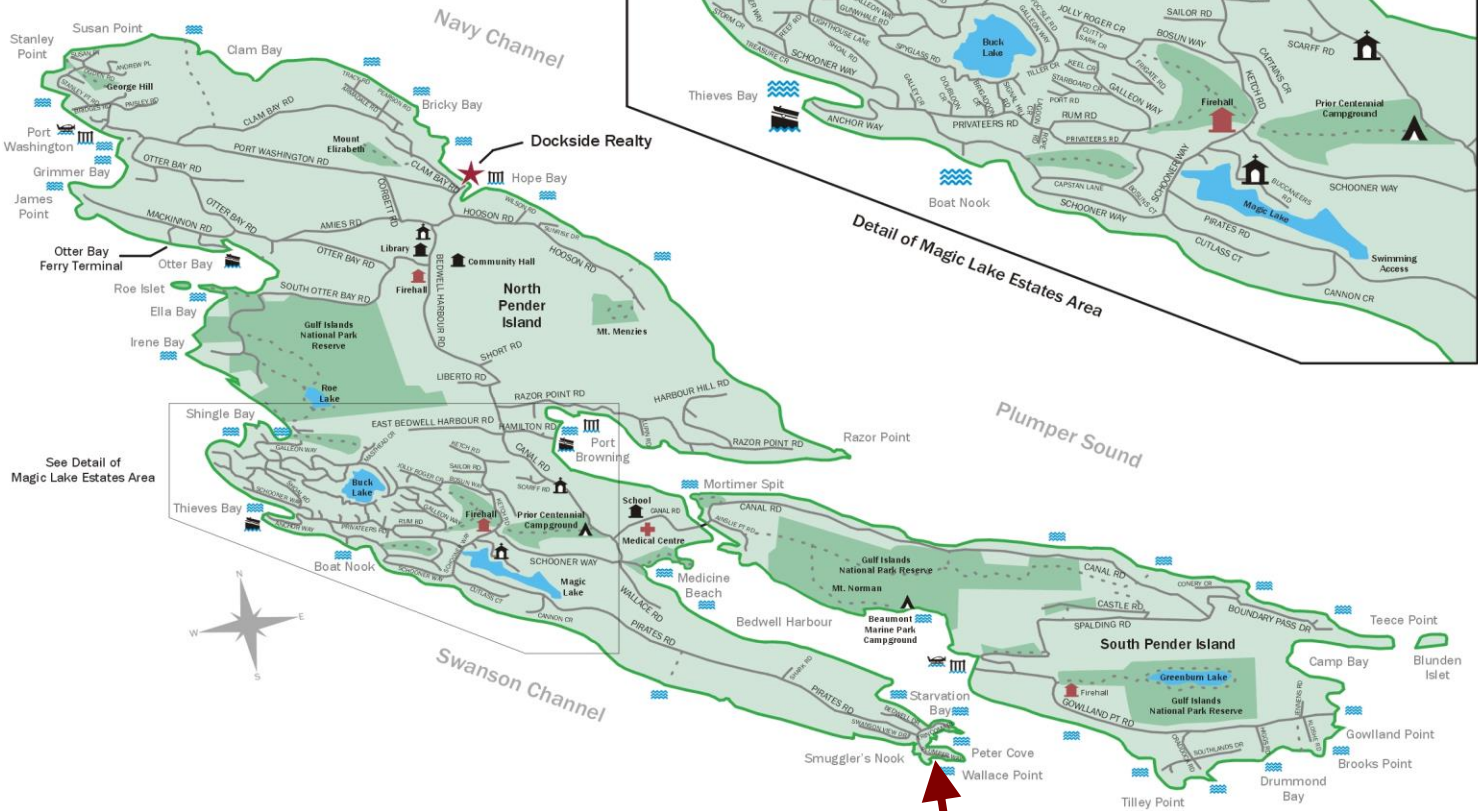
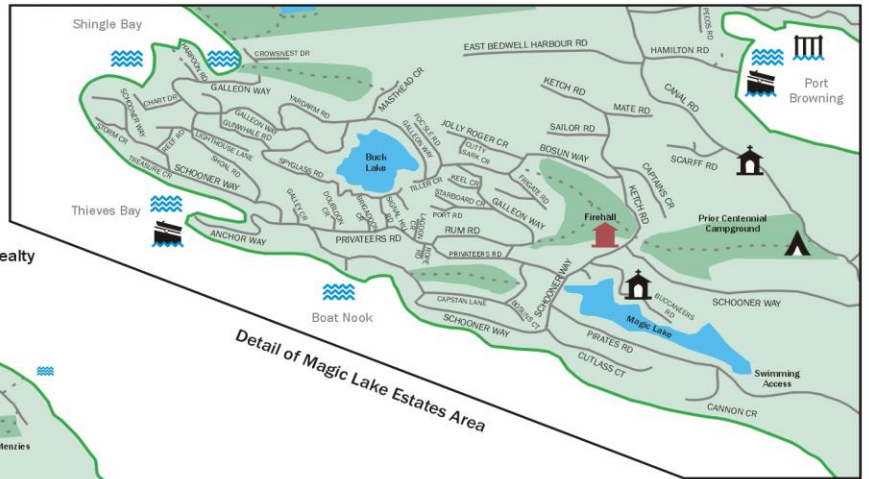


7941 PLUMPER WAY



PENDER ISLAND MAP

Pender Islands British Columbia, Canada



- Dockside Realty
- Public Wharf
- Boat Launch
- Float Plane
- Firehall
- Medical Centre
- Municipal
- Place of Worship
- Campground
- Walking Trail
- Ocean Access/View

Subject Property
7941 PLUMPER WAY

Map courtesy of Dockside Realty. Design Copyright © 2012 Minsky Designs www.minskydesigns.com. All rights reserved.

DISCLAIMER: While every effort is made to provide reliable information, Dockside Realty Ltd. makes no representations or warranties as to the accuracy of this brochure. All measurements are approximate; the buyer is responsible for verifying all data provided.



Pender Island • Saturna Island • Vancouver Island
info@DocksideRealty.ca • 250-629-3166