

Private & Unique on S. Pender!

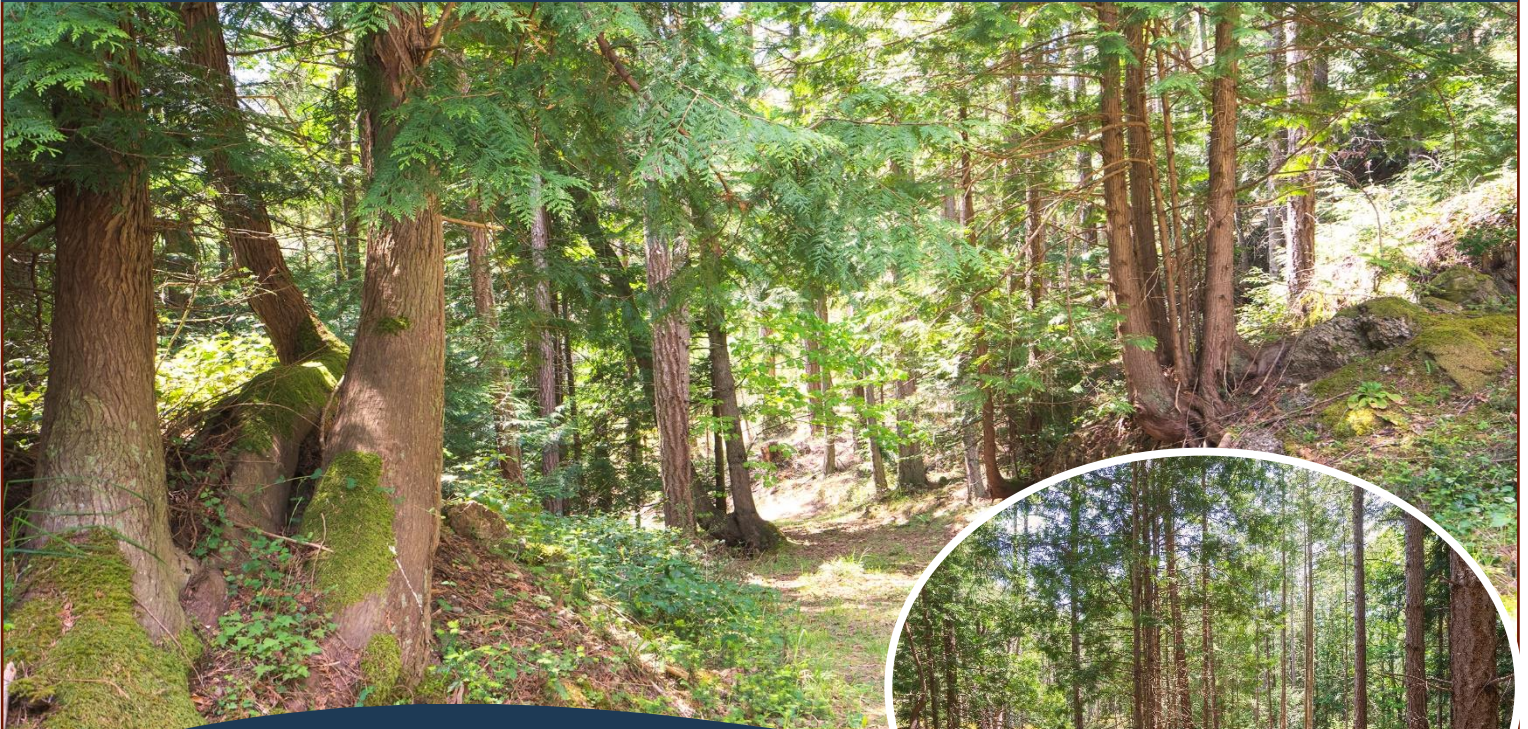


9904 Castle Rd

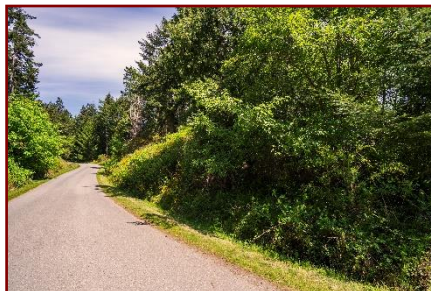


Private and unique on South Pender Island. Enjoy a rural lifestyle on your own 2.46 acres and share 32 acres of common land with a handful of neighbours. Start your morning with a five-minute hike and find yourself on a spectacular and peaceful ocean viewpoint. Roughed in driveway leads to the ideal building spot for a principal residence. Zoning allows for a guest cottage. Located in a very desirable area. Rarely do properties come available in this location! Drilled well in place. Needs Septic and Hydro.

Property Details



9904 Castle Rd



Lot Acres: 2.46

Water: Drilled well

Potability Test: Yes

Well Log: Yes

Waste: Septic system required

Services: At lot line

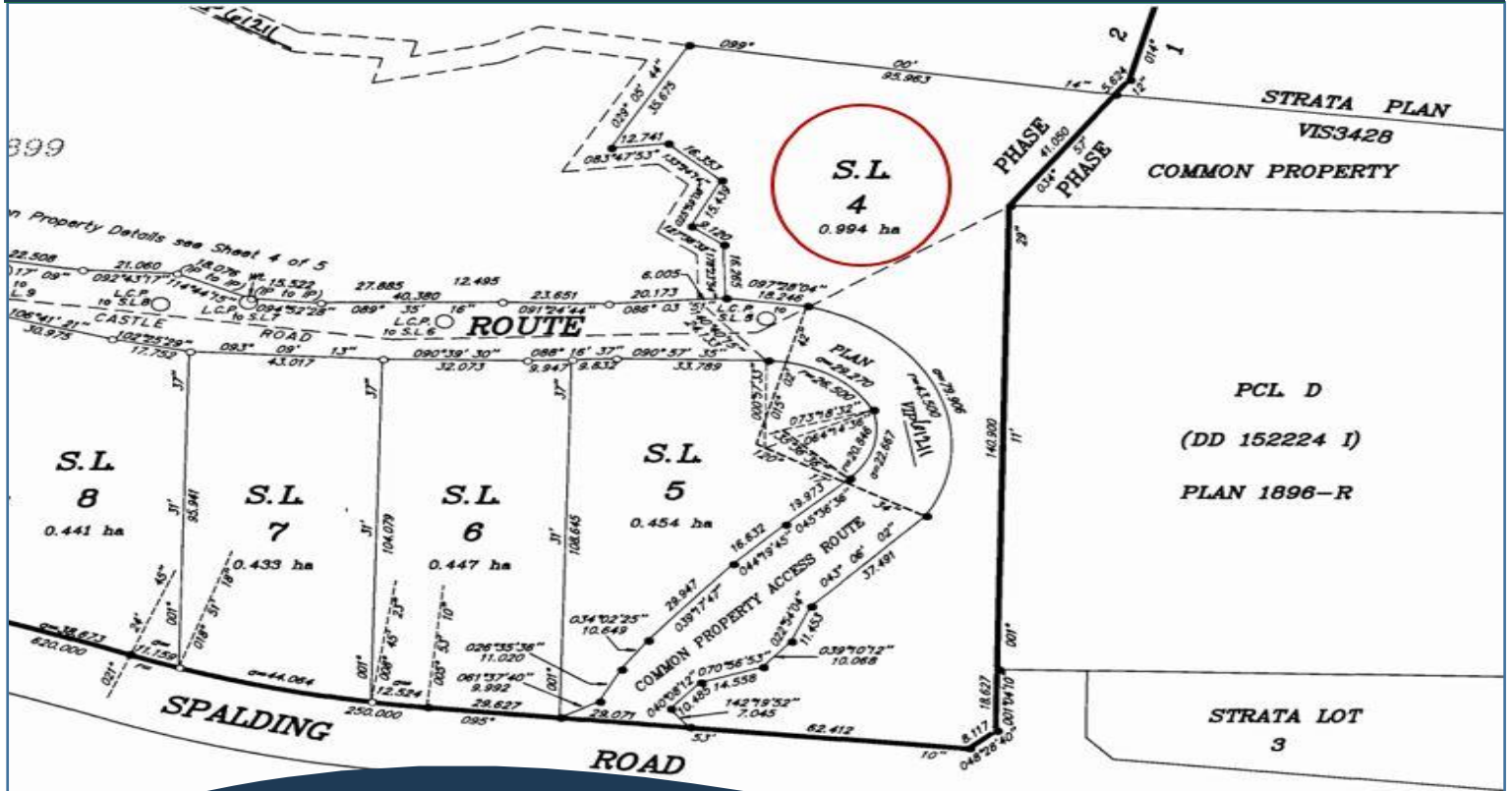
Driveway: Roughed in

Bldg Scheme: No

Lot Features:

- Acreage
- Southern exposure
- Private property
- Level building site
- No thru road
- Treed
- 32 acres of common property

Plot Plan and Aerial View



9904 Castle Road

Aerial - 9904 Castle

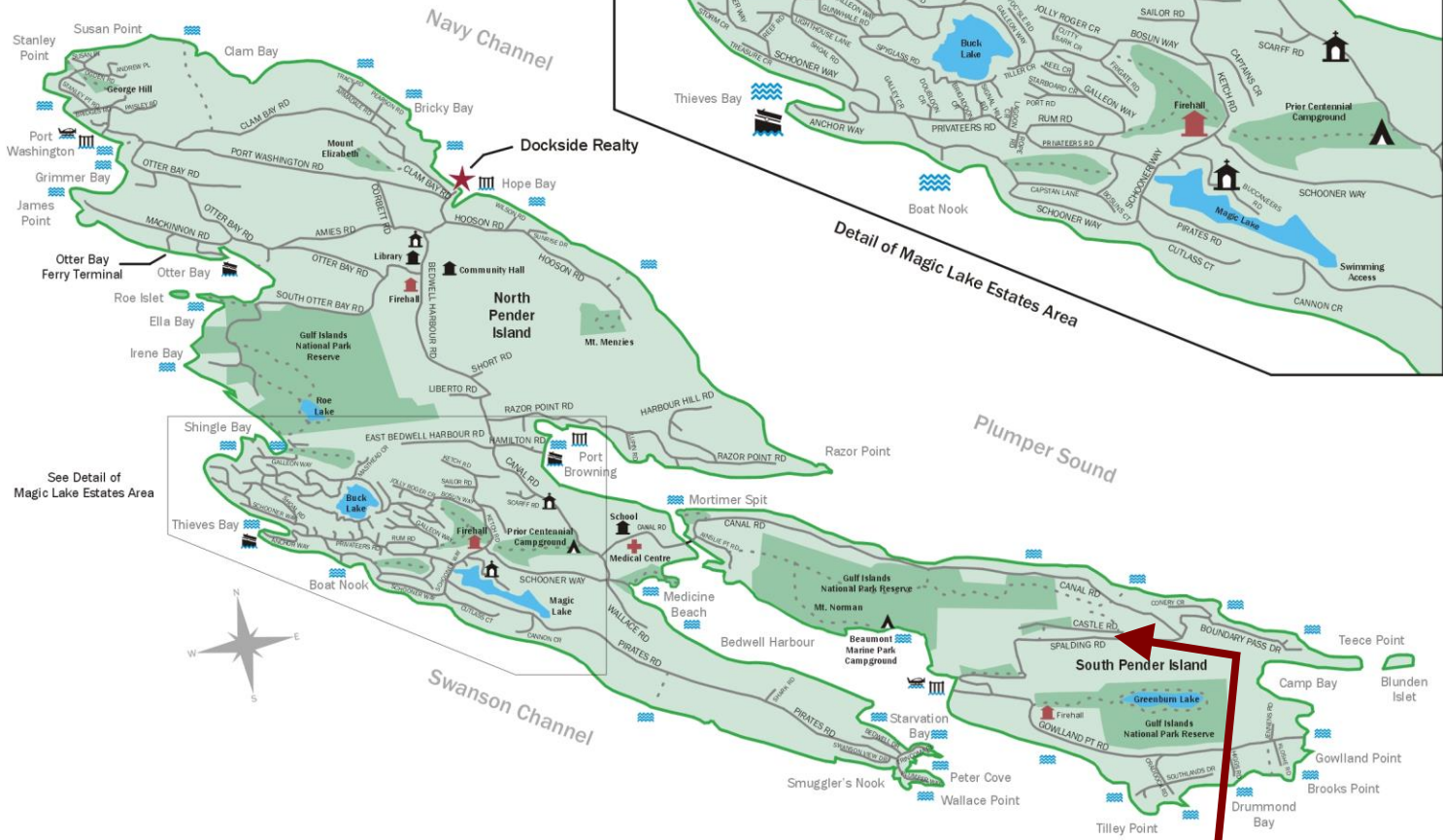
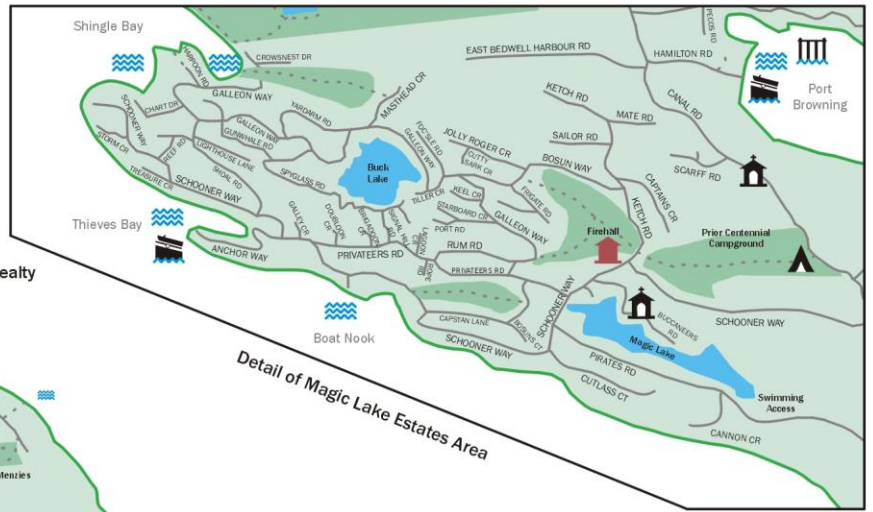


Hope Bay: 250-629-3166
 Sidney: 250-656-5062
 info@DocksideRealty.ca

Driftwood: 250-629-3383
 Saturna: 250-539-2121
 www.DocksideRealty.ca

Pender Islands Map

Pender Islands British Columbia, Canada



- Dockside Realty
- Public Wharf
- Boat Launch
- Float Plane
- Firehall
- Medical Centre
- Municipal
- Place of Worship
- Campground
- Walking Trail
- Ocean Access/View

**Subject Property
9904 Castle Road**

Map courtesy of Dockside Realty. Design Copyright © 2012 Minsky Designs www.minskydesigns.com. All rights reserved.

DISCLAIMER: While every effort is made to provide reliable information, Dockside Realty Ltd. makes no representations or warranties as to the accuracy of this brochure.
All measurements are approximate and the buyer is responsible for verifying all data provided.