

Oceanfront Paradise!



9929 Southlands Drive



Oceanfront Paradise Found at the End of the Road! Aptly named Whalepoint by the original owners, this 1.91-acre property has a sensational shoreline with unobstructed panoramic south facing views. Truly a spectacular setting for land-based whale watching! The custom designed cedar home has been lovingly cared for & recently upgraded with thermal windows throughout. With 2BA, 1BR plus office on the main, plus a second BR with ensuite on the upper floor, the layout offers flexible options for part time or full time living. Floor to ceiling, wall to wall windows on the open plan main floor create the feeling of being enveloped in natural beauty. Weathered wood adds to the quaint charm of the rustic country ambience. An elevated bluff at the ocean's edge offers protection from southeasterly winds. Near the roadside entrance you will find a sizable outbuilding that could be finished to create additional living space or even a studio. Discover solitude soon on sunny South Pender Island!



Dockside Realty
Gulf Islands Vancouver Island

Pender Island • Saturna Island • Vancouver Island

www.DocksideRealty.ca

info@DocksideRealty.ca • 250-629-3383

Property Details



9929 Southlands Drive



Year Built (est):
1972

Lot Acres: 1.91

Bedrooms: 2

Bathrooms: 3

Fin SqFt: 1,550

Unfin SqFt: 625

Bsmt: Crawl Space

Water: Cistern,
drilled Well

Waste: Septic

Driveway: Carport

Foundation:
Slab

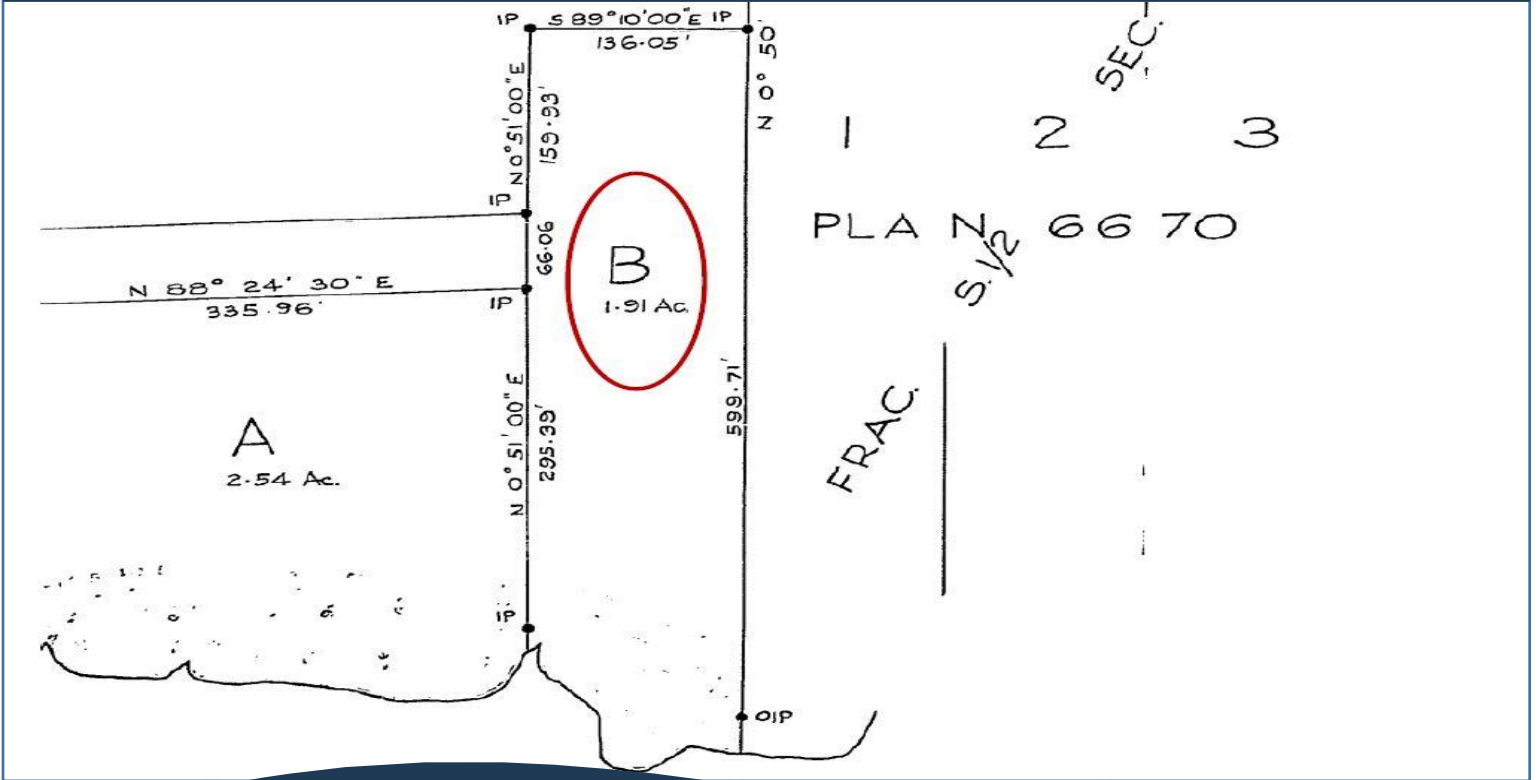
Roof: Metal

Ext Fin: Wood

Heat: Baseboard,
Electric, Wood

- Lot Features:**
- Oceanfront
 - Southern exposure
 - Acreage
 - Cleared
 - Level
 - No through road
 - Private
 - Quiet Area

Plot Plan and Aerial View



9929 Southlands Drive



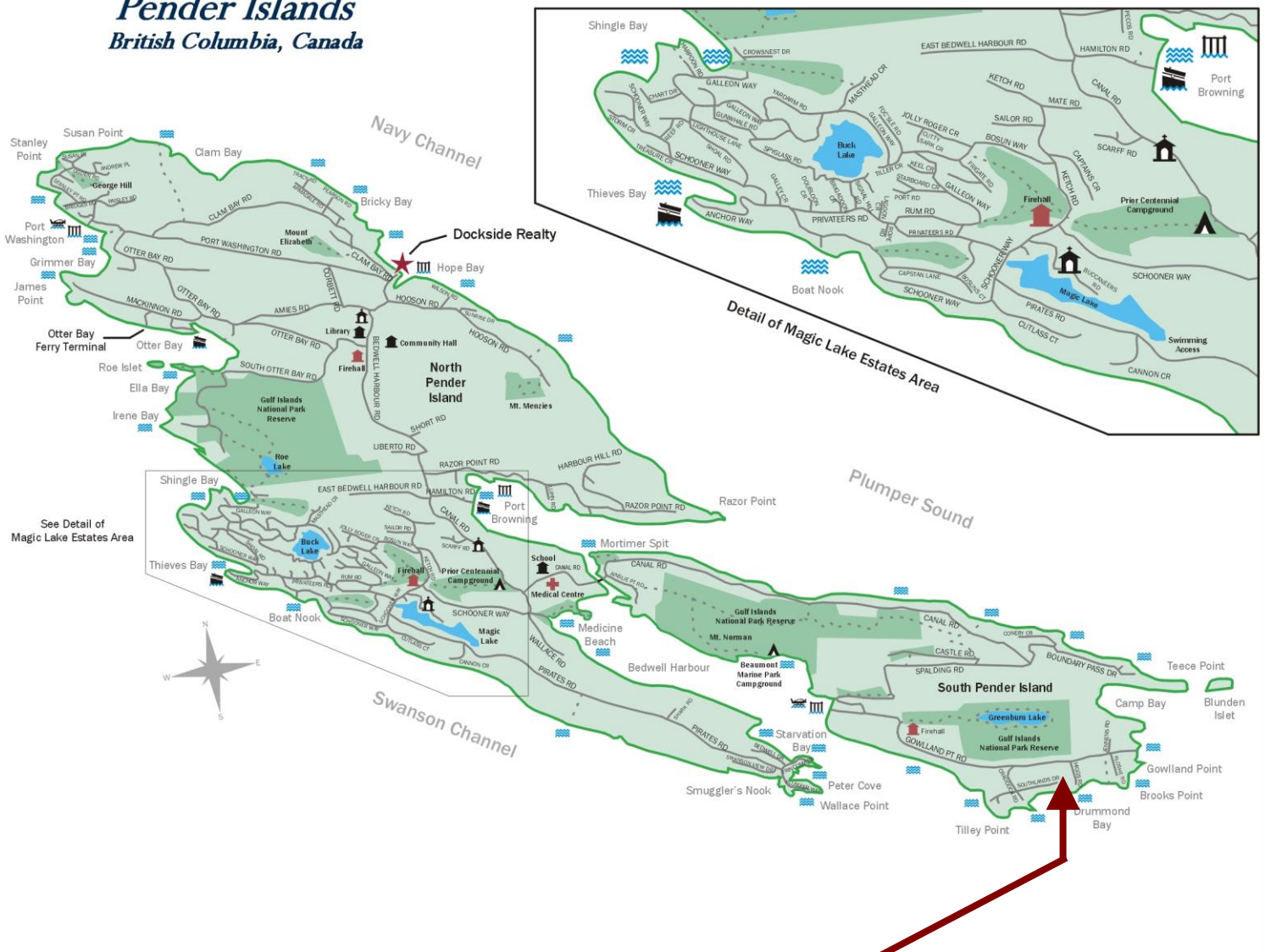
Pender Island • Saturna Island • Vancouver Island

www.DocksdeRealty.ca

info@DocksdeRealty.ca • 250-629-3383

Pender Islands Map

Pender Islands British Columbia, Canada



**Subject Property
9929 Southlands Drive**

- Dockside Realty
- Public Wharf
- Boat Launch
- Float Plane
- Firehall
- Medical Centre
- Municipal
- Place of Worship
- Campground
- Walking Trail
- Ocean Access/View

Map courtesy of Dockside Realty. Design Copyright © 2012 Minsky Designs www.minskydesigns.com. All rights reserved.

DISCLAIMER: While every effort is made to provide reliable information, Dockside Realty Ltd. makes no representations or warranties as to the accuracy of this brochure.

All measurements are approximate and the buyer is responsible for verifying all data provided.



Pender Island • Saturna Island • Vancouver Island
www.DocksideRealty.ca
info@DocksideRealty.ca • 250-629-3383