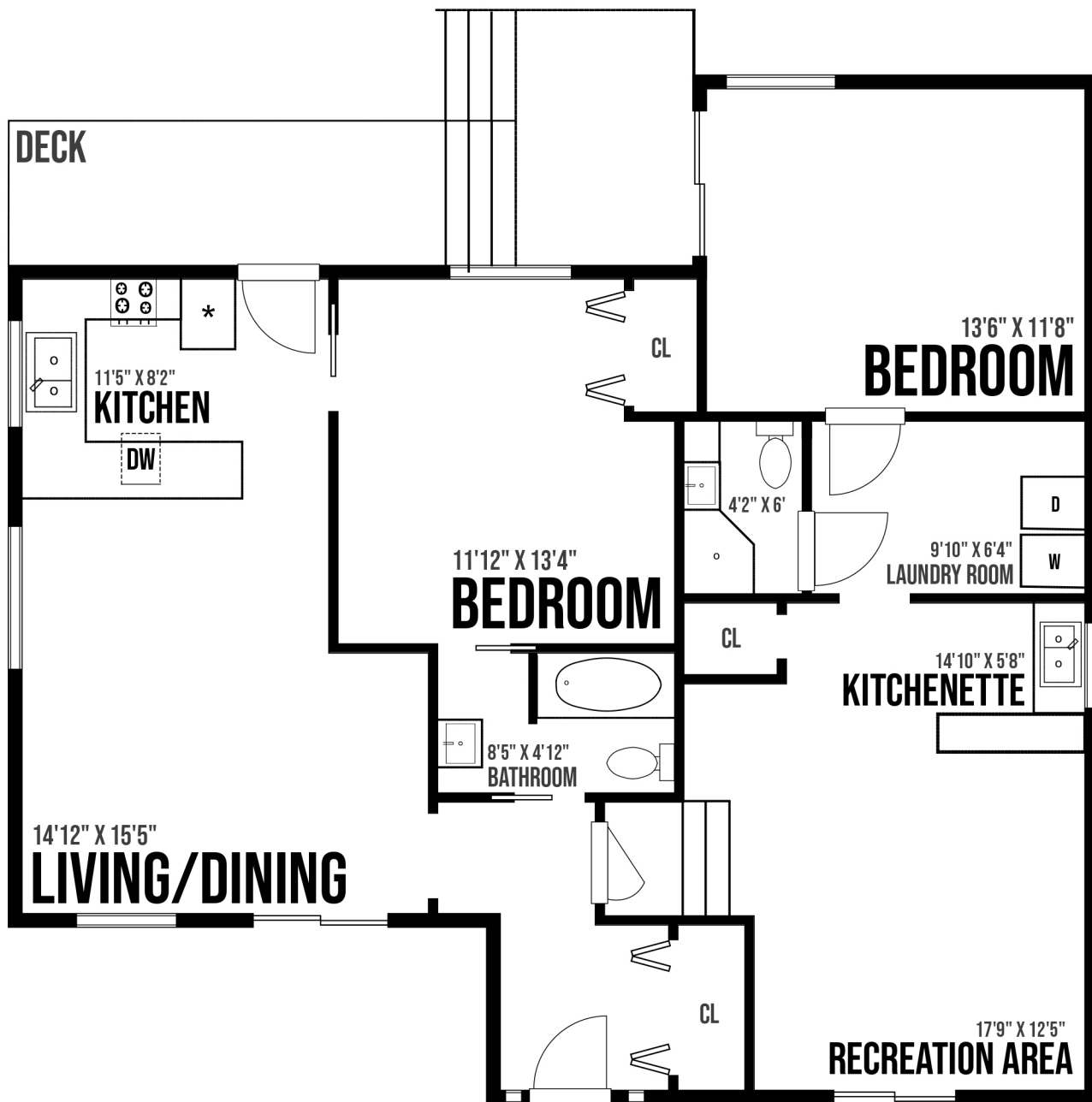
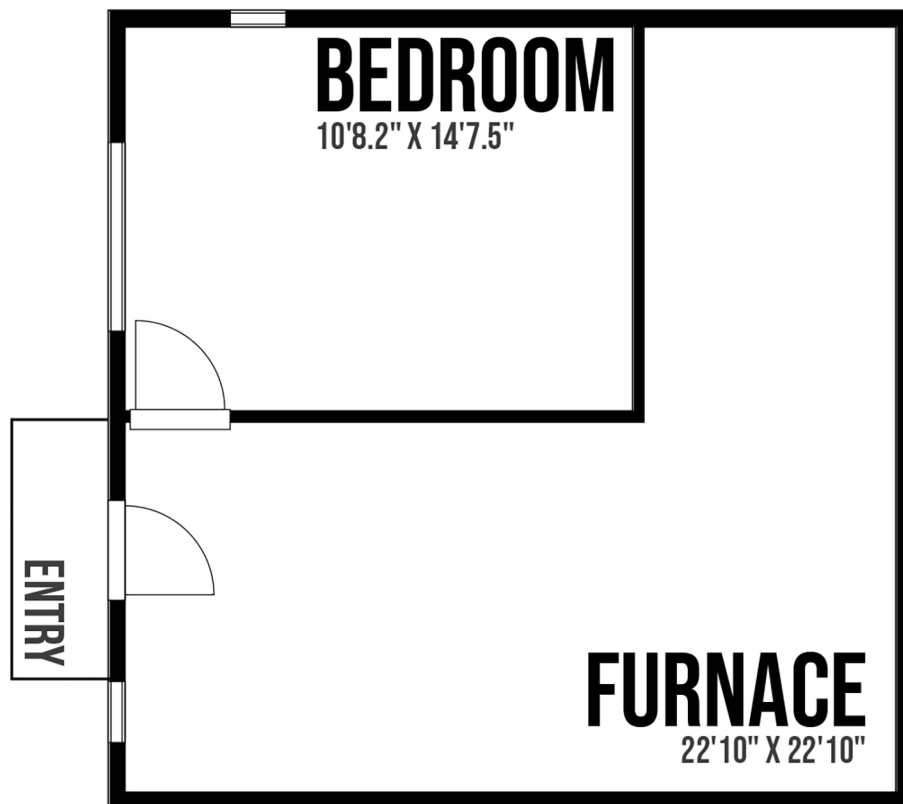


2610 Shoal Rd



Main level approx. sq ft:
 Living/Dining: 200 sq ft
 Kitchen: 100 sq ft
 Bedroom: 160 sq ft
 Bathroom: 50 sq ft
 Hallways: 60 sq ft
 Rec Room: 270 sq ft
 Bedroom: 160 sq ft
 Bathroom: 30 sq ft
 Laundry: 70 sq ft
 Decks: 200 sq ft
 Total main level: 1100 sq ft



Basement approx sq ft:
 Furnace room: 350 sq ft
 Bedroom: 170 sq ft
 Total basement: 520 sq ft

Prepared for the exclusive use of Jaime MacLean and Dockside Realty Ltd.
 All measurements are approximate and buyer to verify if important

