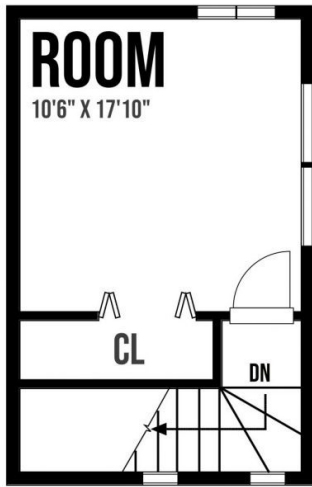


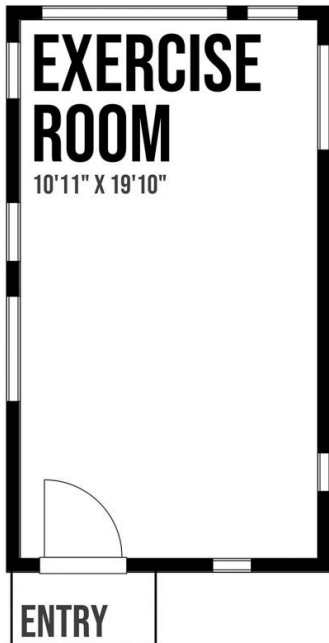
2697 Galleon Way

Approximate internal sq ft:
Living/Dining area: 240 sq ft
Kitchen: 90 sq ft
Bedroom: 120 sq ft
Bathroom: 40 sq ft
Hallways: 90 sq ft
Deck: 630 sq ft
Total lower level: approximately 580 sq ft

Upper level bedroom: 150 sq ft



Studio internal sq ft: 220 sq ft



Prepared for the exclusive use of Sam Boyte and Dockside Realty Ltd.
All measurements are approximate and Buyer to verify if important.

