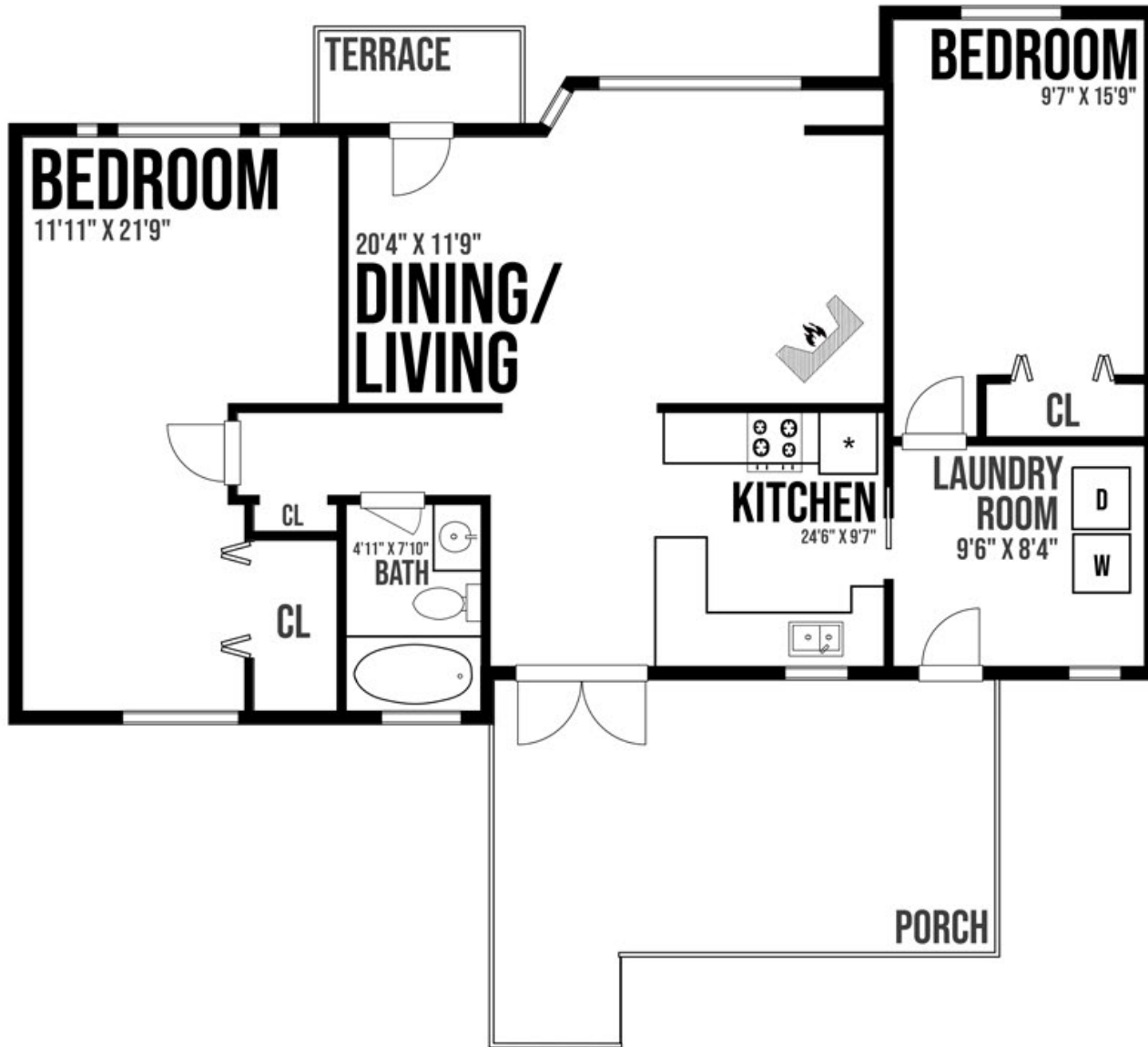
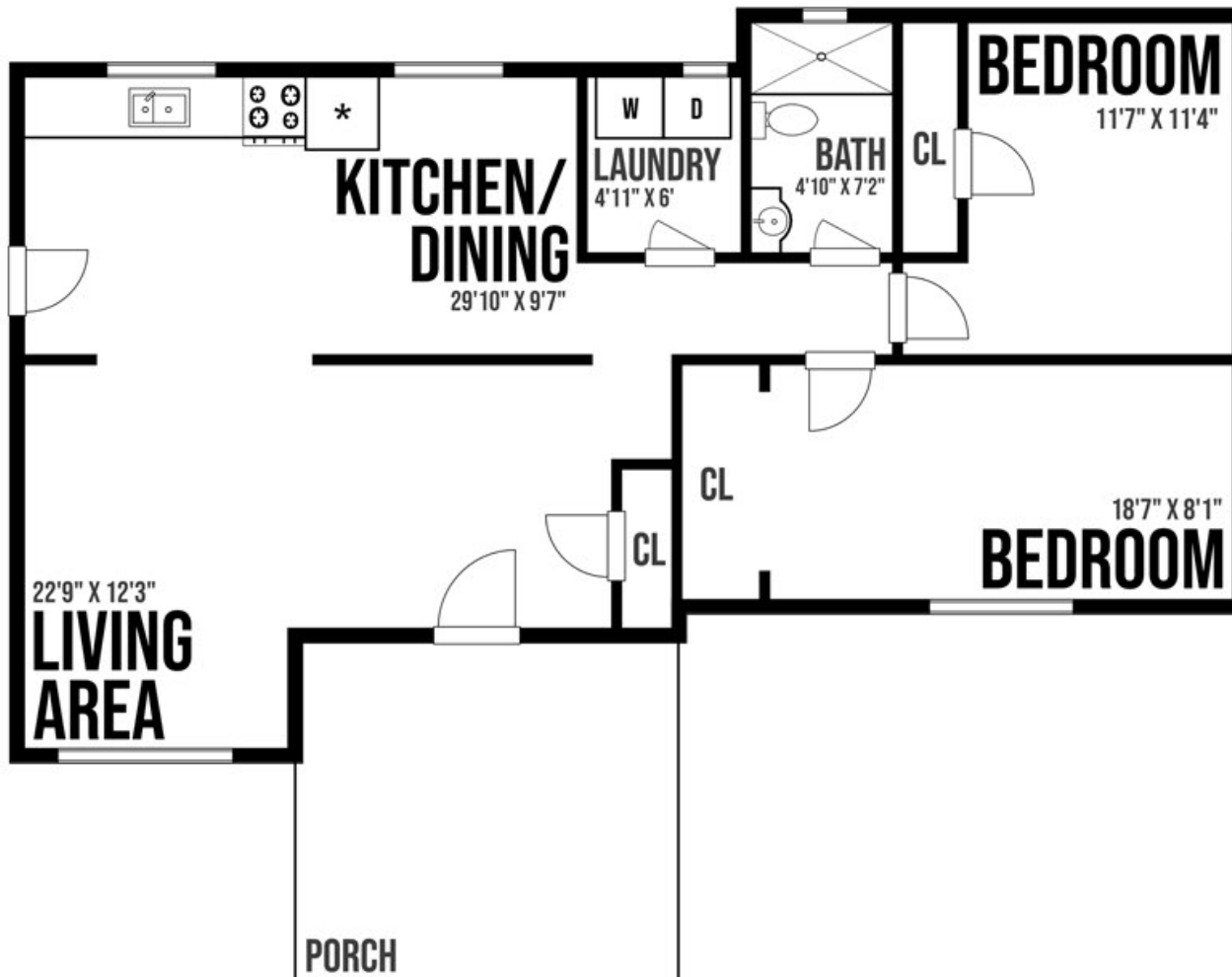


# 3405 South Otter Bay Rd.



Upper level approximate internal sq ft:  
 Living/Dining: 230 sq ft  
 Kitchen: 180 sq ft  
 Bedroom: 230 sq ft  
 Bedroom: 140 sq ft  
 Bathroom: 40 sq ft  
 Laundry: 80 sq ft  
 Porch: 250 sq ft  
 Total upper level: 900 sq ft



Lower level approximate internal sq ft:  
 Living area: 240 sq ft  
 Kitchen/Dining: 220 sq ft  
 Bedroom: 150 sq ft  
 Bedroom: 120 sq ft  
 Bathroom: 40 sq ft  
 Laundry: 30 sq ft  
 Porch: 160 sq ft  
 Total lower level: 900 sq ft