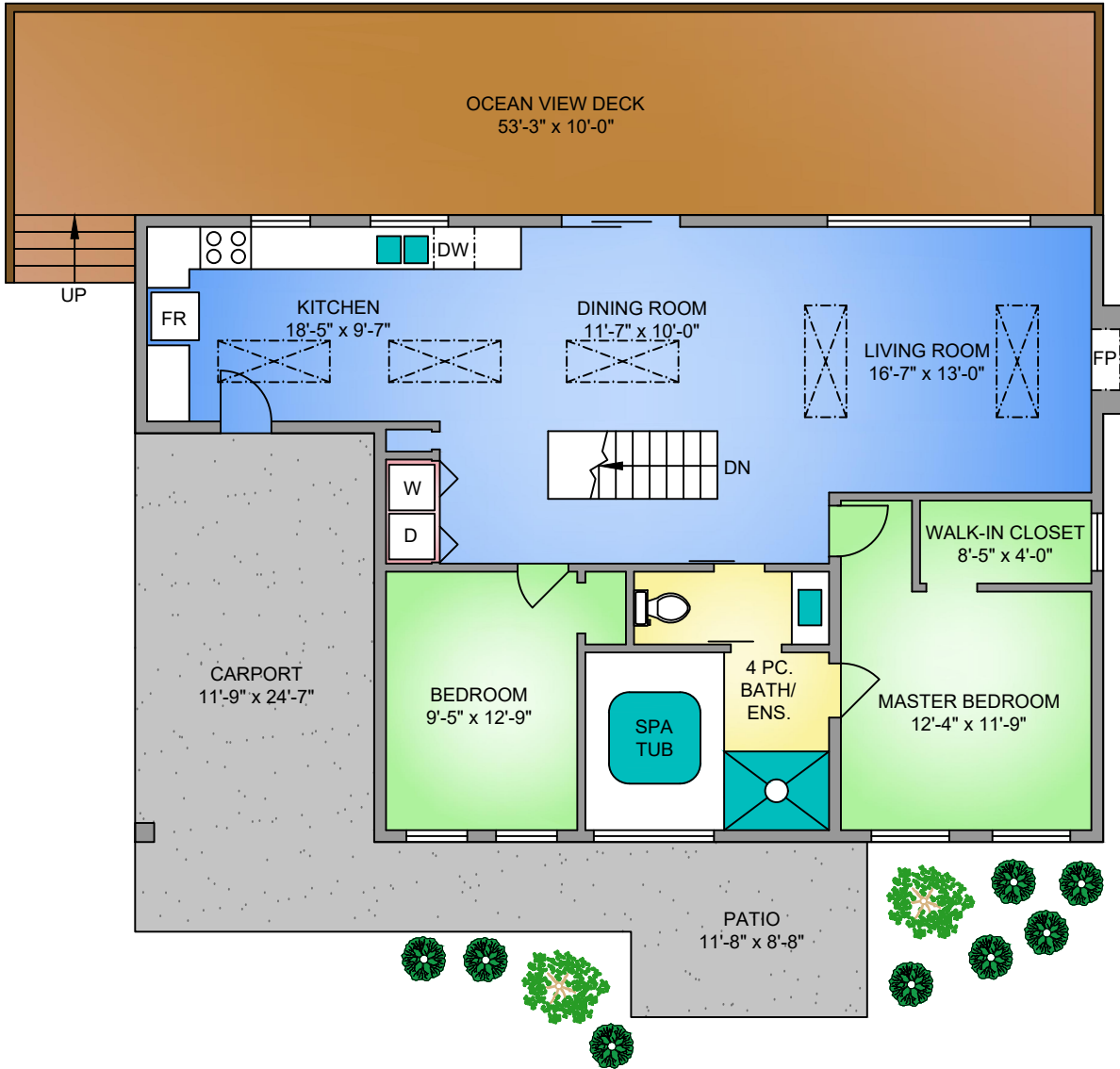


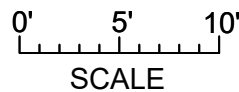
# MAIN FLOOR

1242 SQ. FT.

8FT CEILING



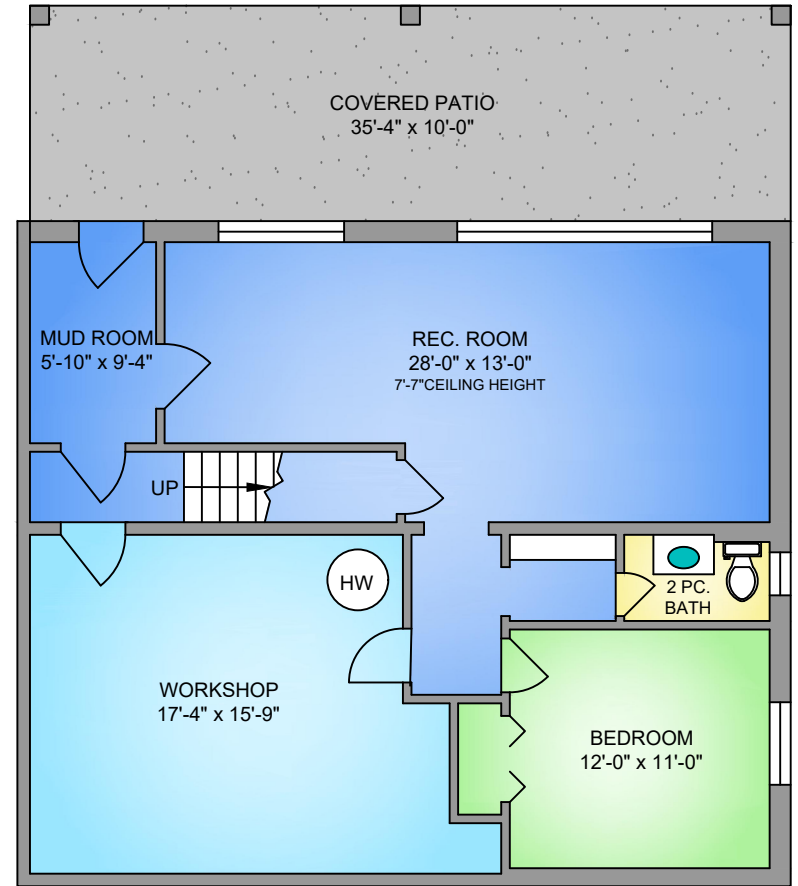
NORTH



# LOWER FLOOR

1108 SQ. FT.

7'-7" CEILING HEIGHT



2779 SCHOONER WAY  
JULY 20, 2020  
PREPARED FOR THE EXCLUSIVE USE OF GAVIN LONERGAN  
PLANS MAY NOT BE 100% ACCURATE, IF CRITICAL BUYER TO VERIFY.

FLOOR	AREA (SQ. FT.)				
	TOTAL	FINISHED	UNFINISHED	CARPORT	DECK / PATIO
MAIN	1242	1242	-	289	633
LOWER	1108	813	295	-	353
<b>TOTAL</b>	<b>2350</b>	<b>2055</b>	<b>295</b>	<b>289</b>	<b>986</b>