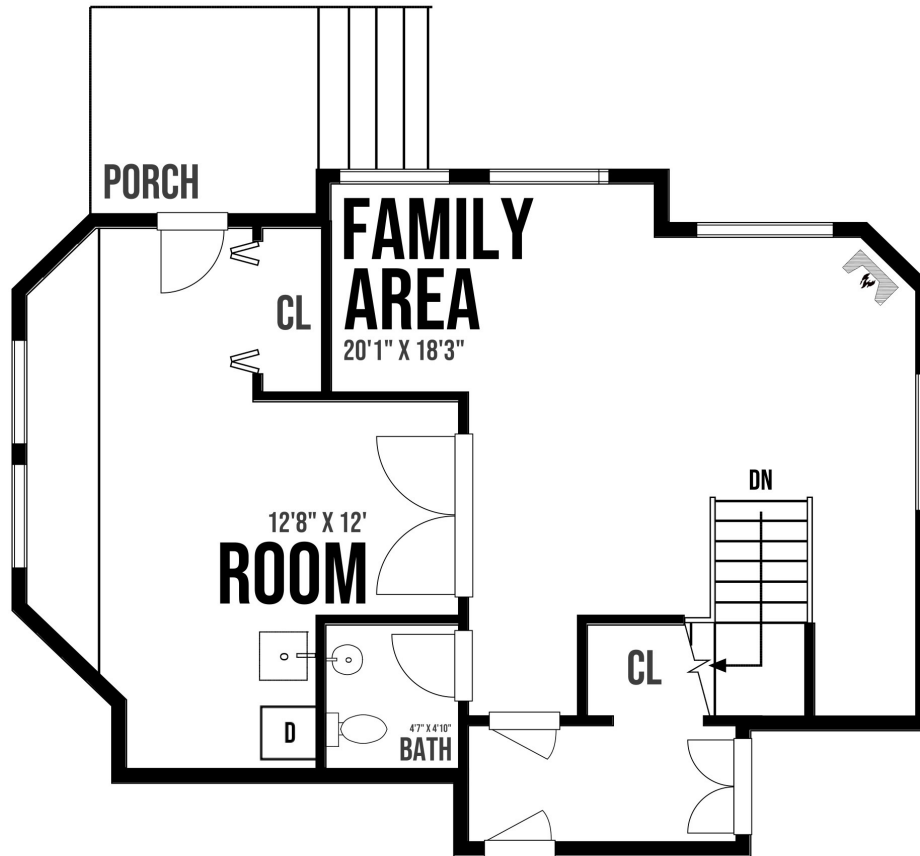


3703 Sextant Crescent - Lower level

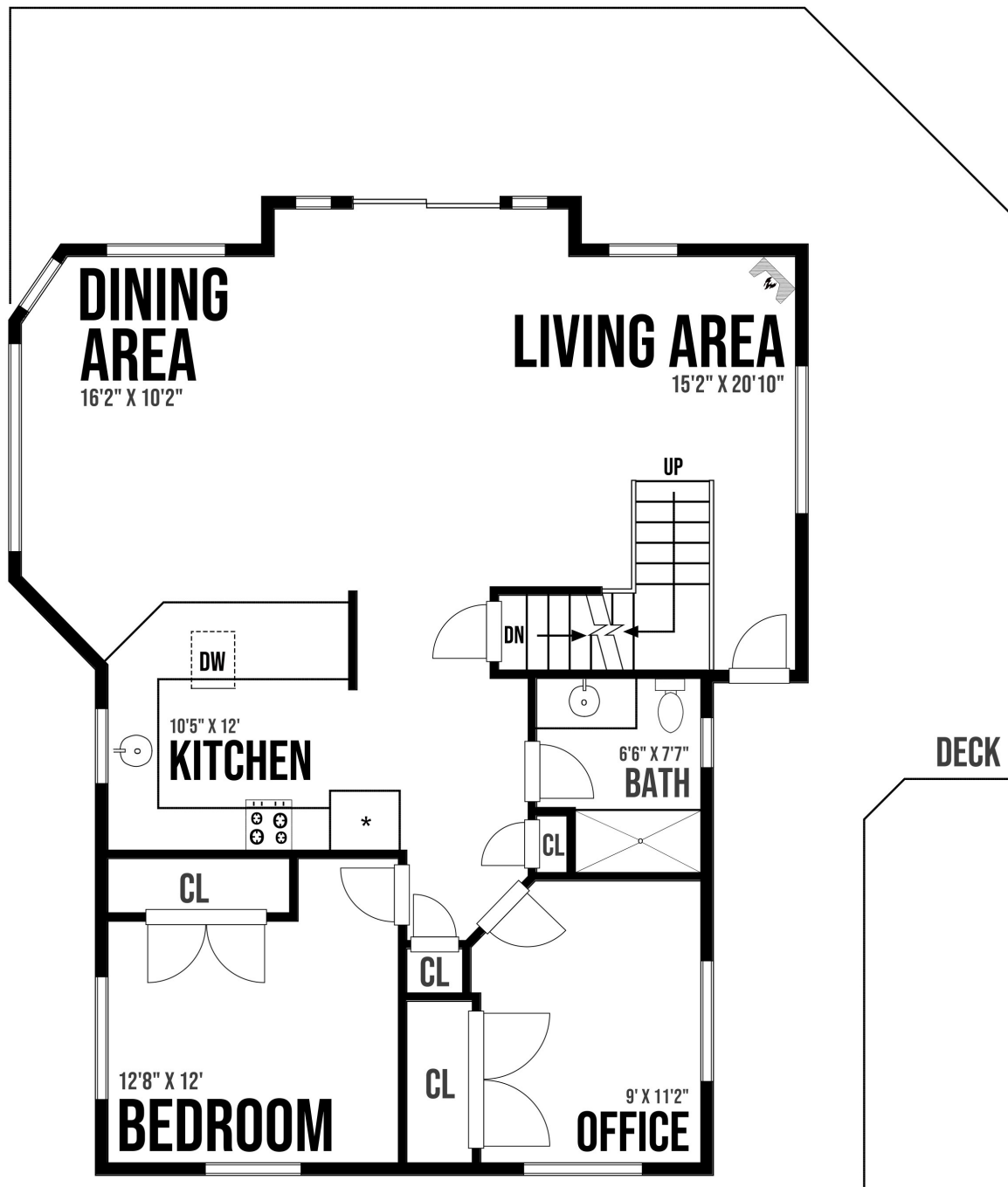


Approximate internal sq ft:
Family area: 300 sq ft
Mudroom/entrance: 195 sq ft
Bathroom: 25 sq ft
Hallway to storage areas: 45 sq ft
Porch: 55 sq ft
Total approximate sq ft lower level: 565 sq ft

Prepared for the exclusive use of Gavin Lonergan and Dockside Realty Ltd.
All measurements are approximate and Buyer to verify if important



3703 Sextant Crescent - Main Floor



Approximate internal sq ft:

Living/Dining area: 515 sq ft

Kitchen: 135 sq ft

Bedroom: 120 sq ft

Office: 100 sq ft

Bathroom: 45 sq ft

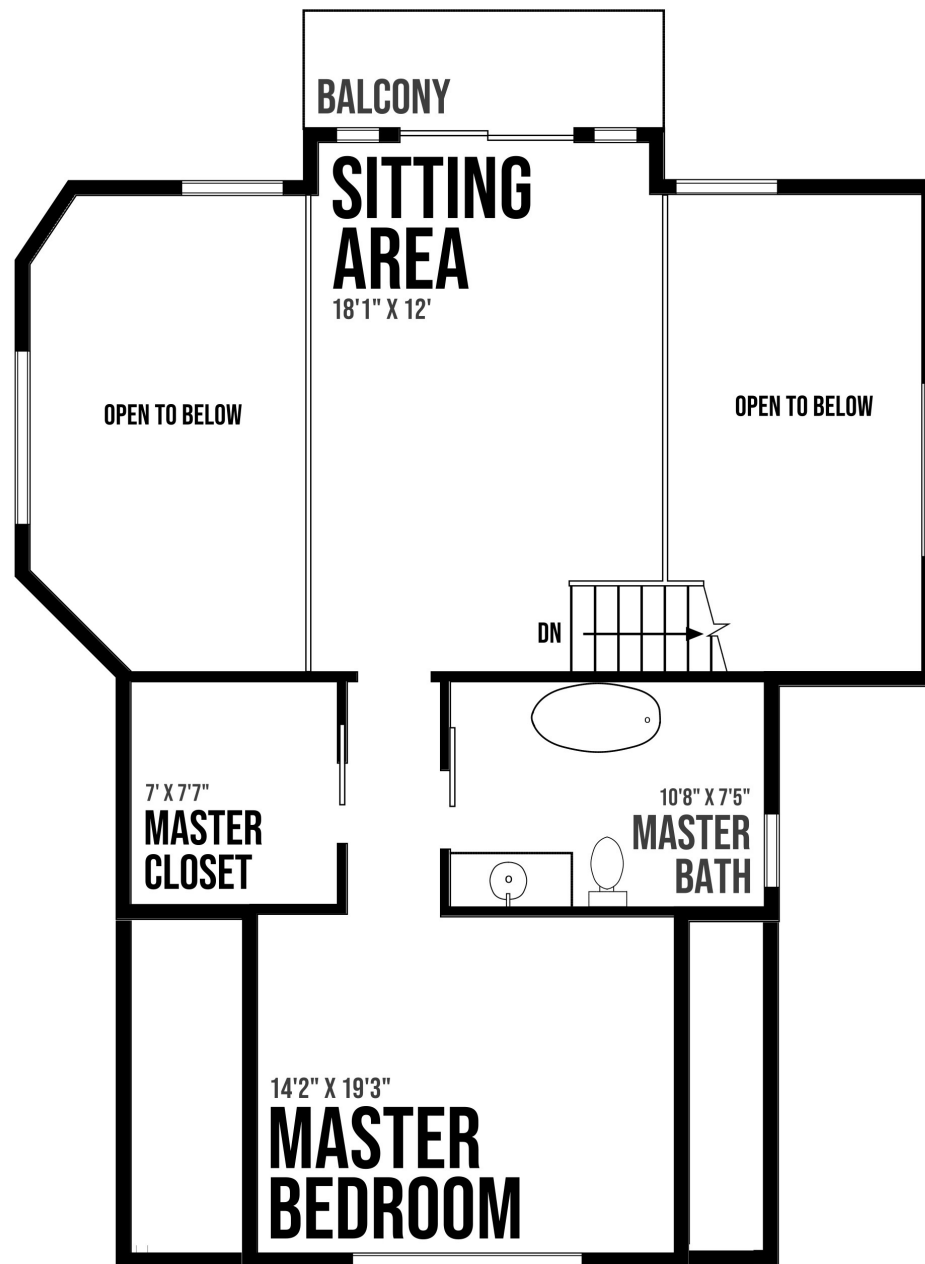
Deck: 620 sq ft

Total approximate sq ft main floor: 915 sq ft

Prepared for the exclusive use of Gavin Lonergan and Dockside Realty Ltd.
All measurements are approximate and Buyer to verify if important



3703 Sextant Crescent - Second floor



Approximate internal sq ft:

Sitting area: 225 sq ft

Master bedroom: 190 sq ft

Bathroom: 80 sq ft

Walk-in closet: 55 sq ft

Balcony: 50 sq ft

Total approximate sq ft lower level: 550 sq ft

Prepared for the exclusive use of Gavin Lonergan and Dockside Realty Ltd.
All measurements are approximate and Buyer to verify if important

