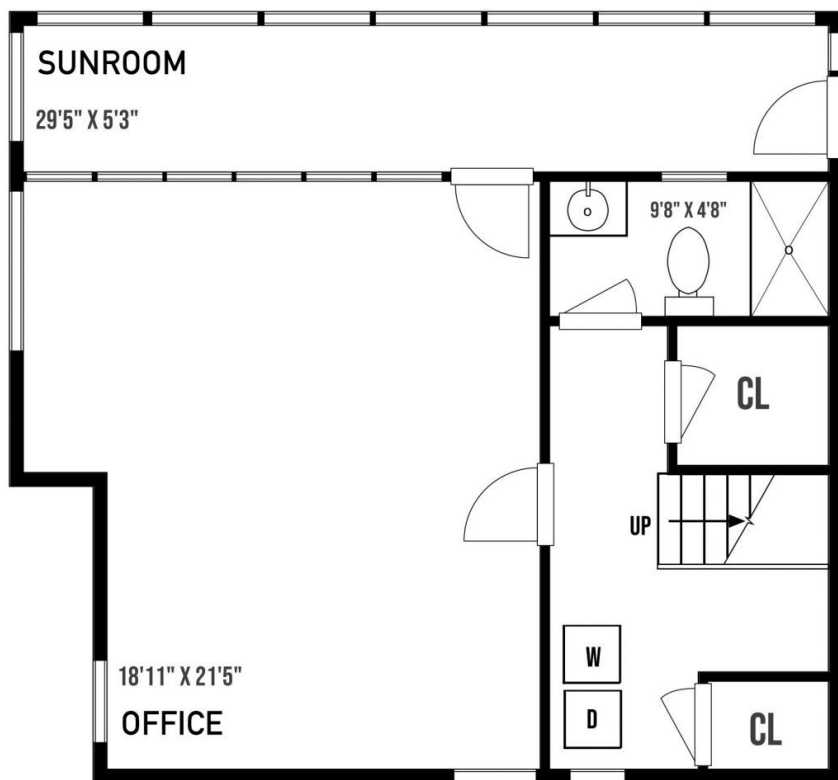
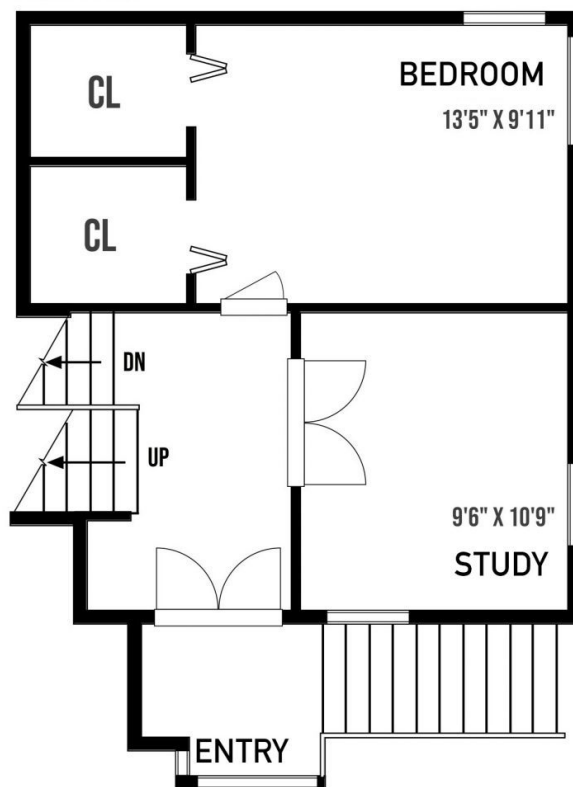


4713 Scarff Rd

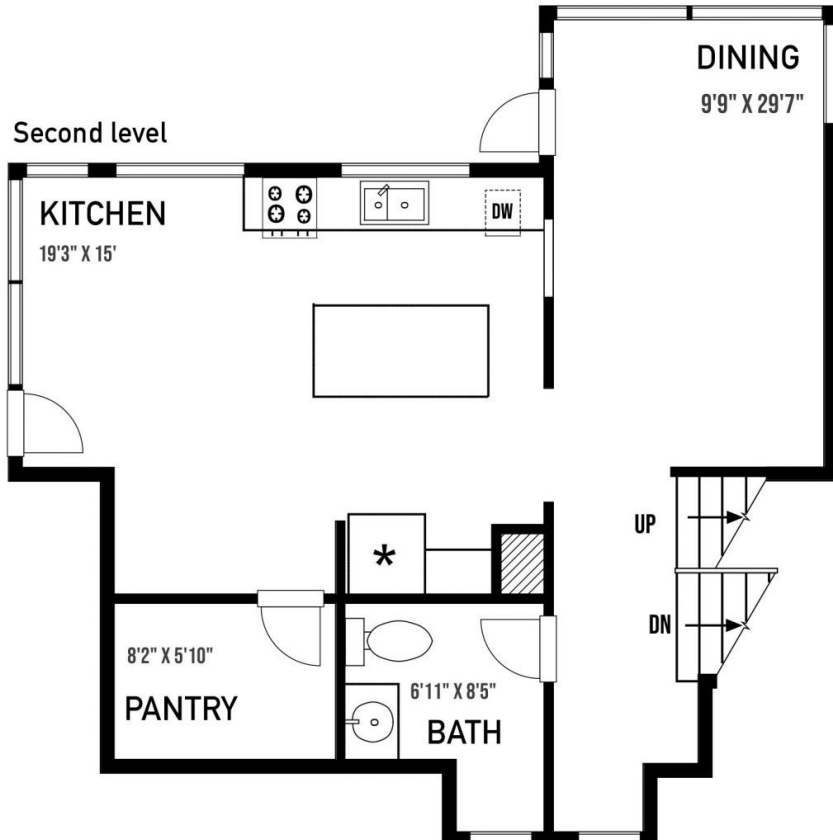
Lower level



Main level



Second level



Approximate internal sq ft:
 Sunroom: 160 sq ft
 Office: 380 sq ft
 Lower level bathroom: 50 sq ft
 Laundry/storage: 220 sq ft
 Deck: 550 sq ft

Study: 110 sq ft
 Bedroom: 140 sq ft
 Hallway: 110 sq ft

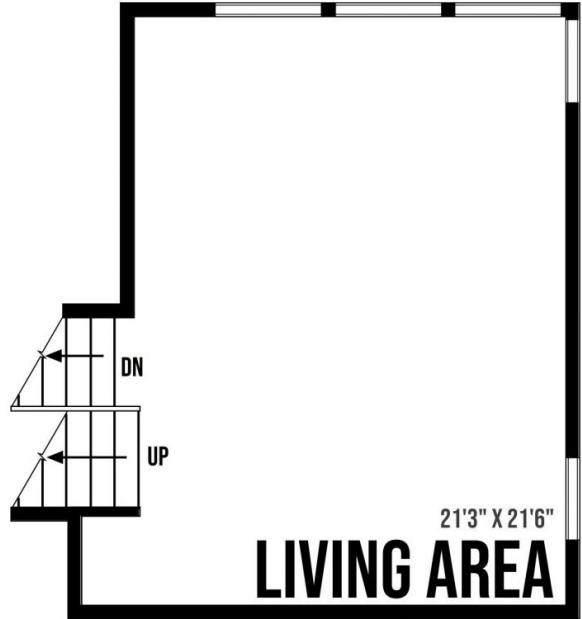
Kitchen: 270 sq ft
 Dining room: 160 sq ft
 Bathroom: 50 sq ft
 Pantry: 50 sq ft
 Hallways: 110 sq ft
 Deck: 240 sq ft

Prepared for the exclusive use of Gavin Lonergan and Dockside Realty Ltd.
 All measurements are approximate and buyer to verify if important



4713 Scarff Rd

Third level



Fourth level



Approximate internal sq ft:

Living area: 280 sq ft

Master bedroom: 250 sq ft

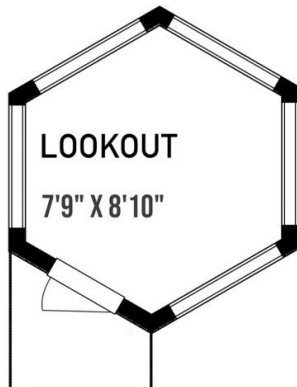
Closet: 50 sq ft

Closet: 50 sq ft

Landing: 80 sq ft

Bathroom: 140 sq ft

Lookout: 55 sq ft

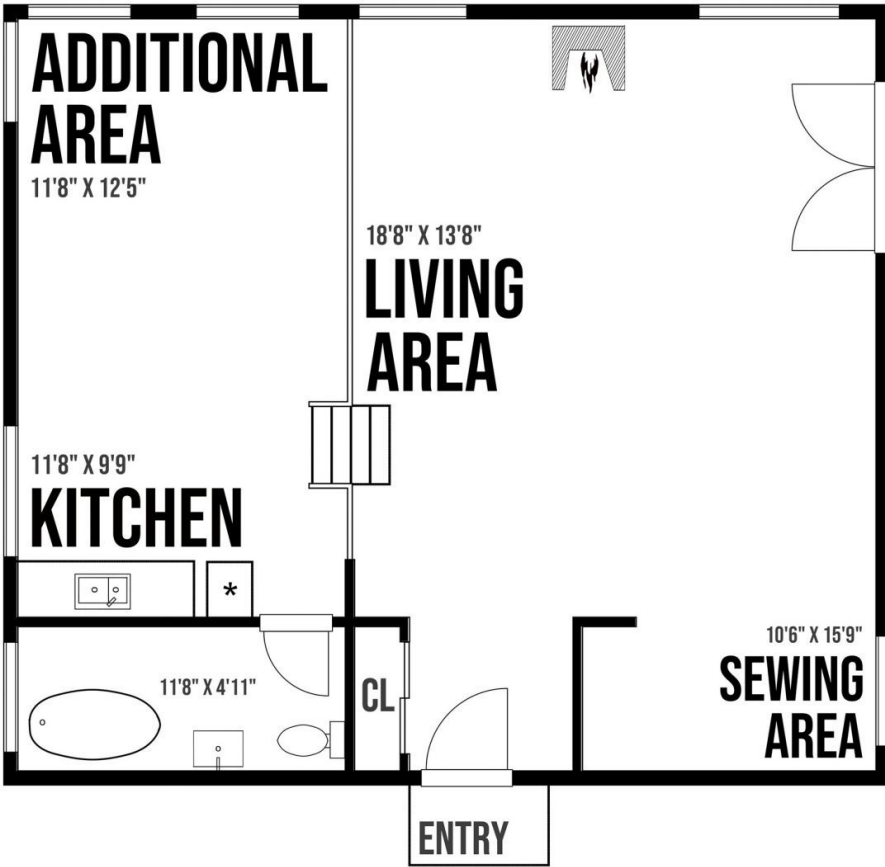


Prepared for the exclusive use of Gavin Lonergan and Dockside Realty Ltd.
All measurements are approximate and buyer to verify if important



4713 Scarff Rd

Cabin:



Approximate internal sq ft:

Cabin:

Living area: 520 sq ft

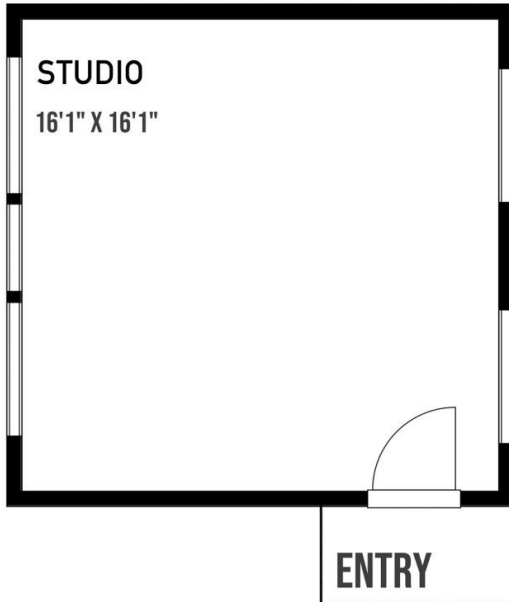
Kitchen/Dining: 265 sq ft

Bathroom: 65 sq ft

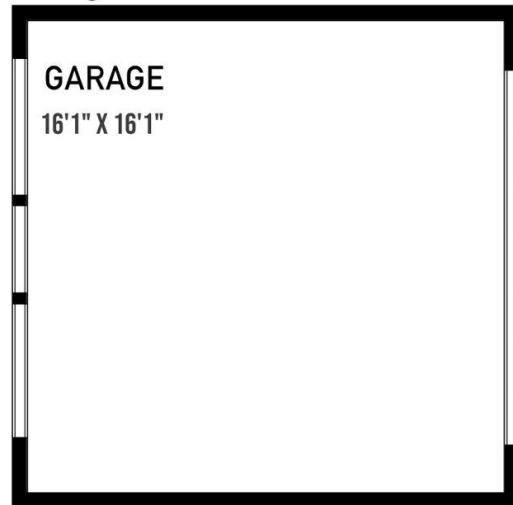
Studio: 280 sq ft

Garage: 280 sq ft

Studio:



Garage:



Prepared for the exclusive use of Gavin Lonergan and Dockside Realty Ltd.
All measurements are approximate and buyer to verify if important

