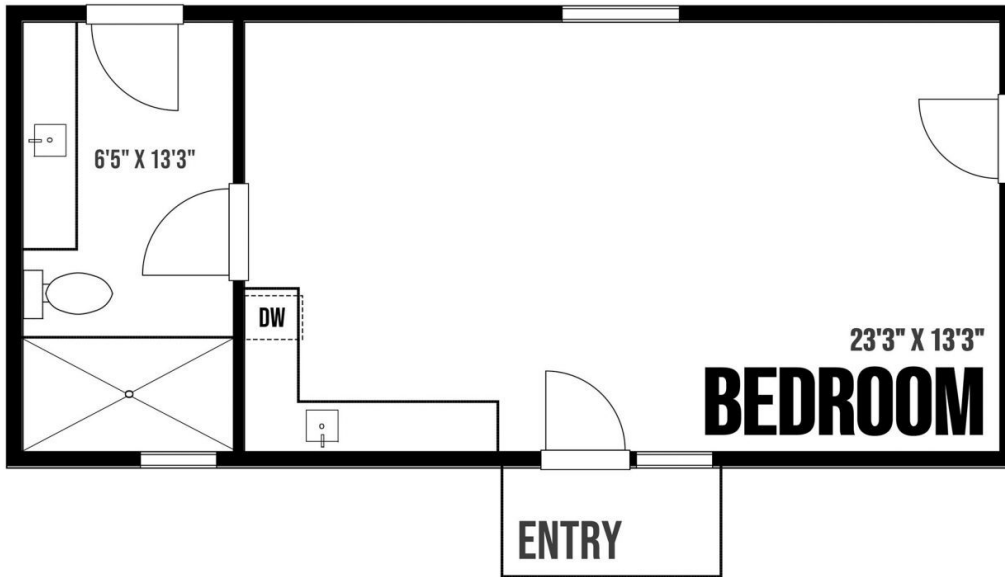
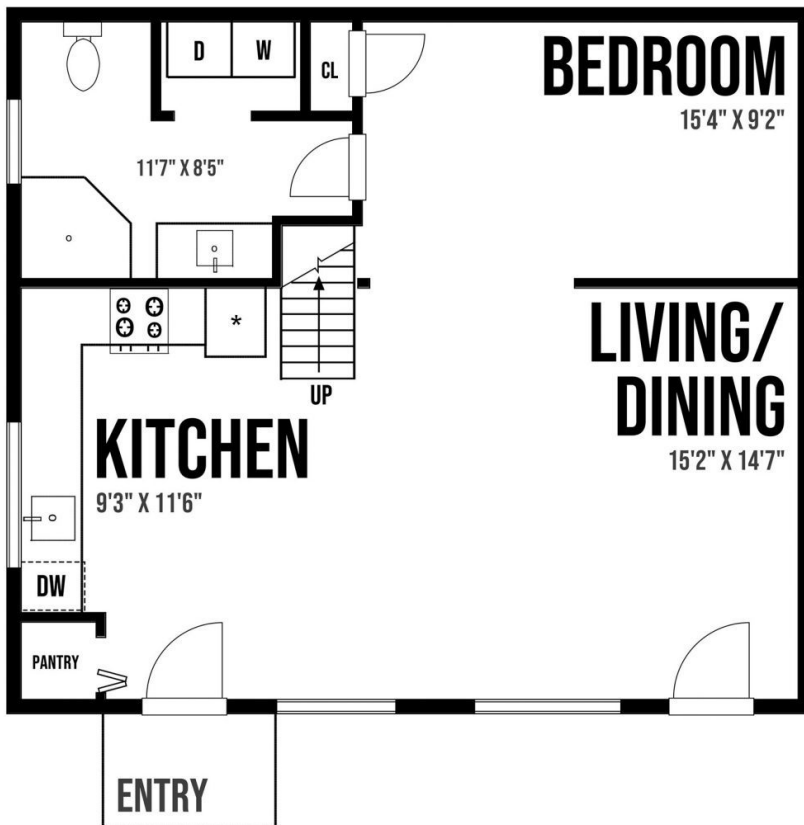


# 5402 Wilson Rd. - Workshop & Studio



Workshop  
Approximate internal sq ft:  
Main room: 310 sq ft  
Bathroom: 90 sq ft

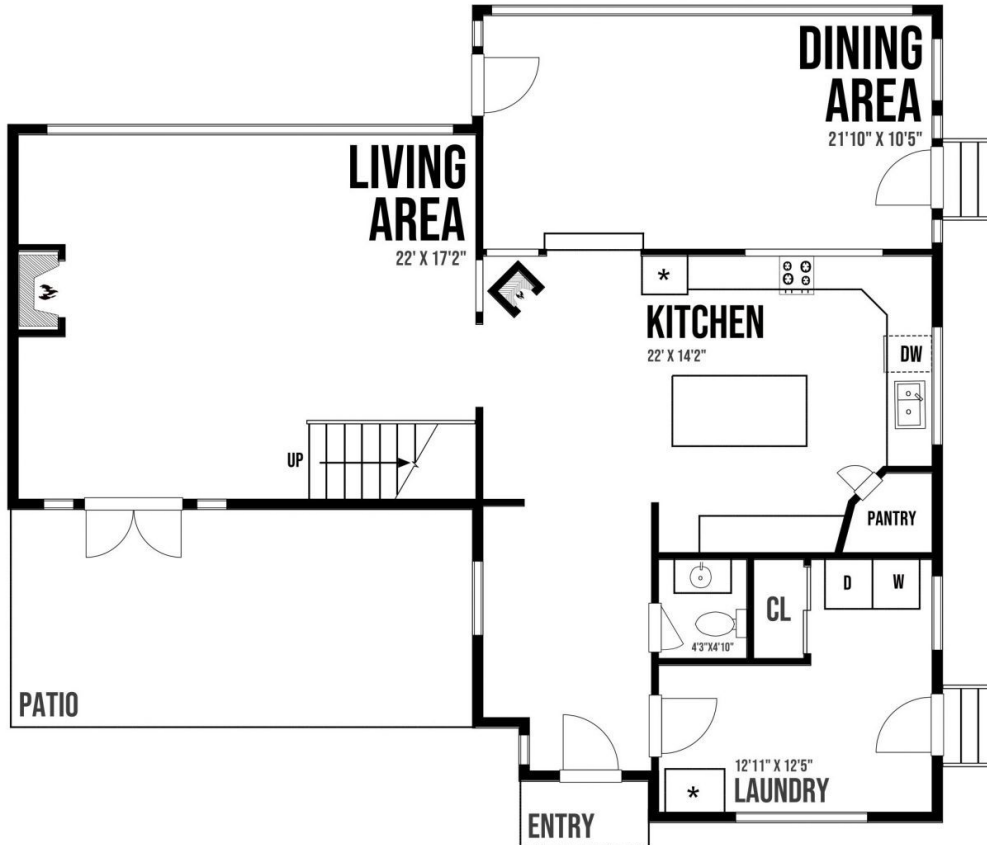


Studio  
Approximate internal sq ft:  
Living area: 280 sq ft  
Kitchen: 120 sq ft  
Bedroom: 150 sq ft  
Bathroom: 90 sq ft

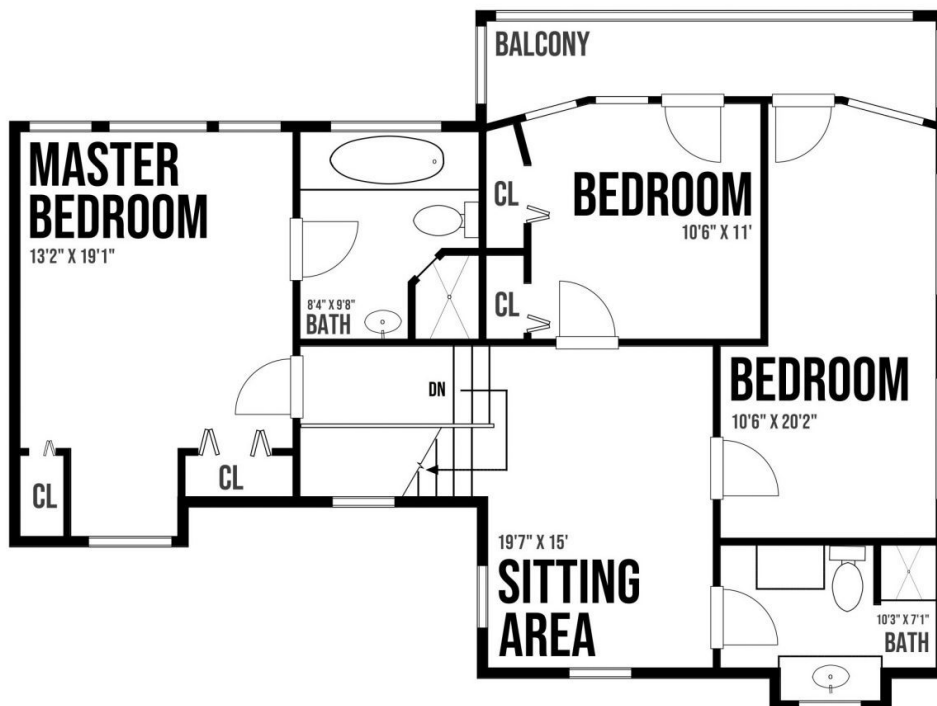
Prepared for the exclusive use of Sam Boyte and Dockside Realty Ltd.  
All measurements are approximate and Buyer to verify if important.



# 5402 Wilson Rd - House



Approximate internal sq ft:  
 Living room: 400 sq ft  
 Kitchen: 300 sq ft  
 Dining room: 250 sq ft  
 Hallway: 100 sq ft  
 Laundry room: 130 sq ft  
 Bathroom: 25 sq ft  
 Patio: 250 sq ft



Approximate internal sq ft:  
 Bedroom: 225 sq ft  
 Ensuite: 85 sq ft  
 Sitting area/Hallway: 230 sq ft  
 Bedroom: 190 sq ft  
 Bedroom: 120 sq ft  
 Sunroom: 90 sq ft  
 Bathroom: 70 sq ft

Prepared for the exclusive use of Sam Boyte and Dockside Realty Ltd.  
 All measurements are approximate and Buyer to verify if important.

